

TECHNOTE 2503-S(10,11)

ISSUED

November 2025

SUBJECT

Release of MCEGold® 3.2.11 Stand Alone for Windows 10 or 11.3

DESCRIPTION

MCEGold 3.2.11 Stand Alone version is an upgrade from MCEGold 3.2.10. This upgrade adds the ability for the PDMAEYE to capture power test data from up to **three AC induction motors** using a single PDMAEYE

NOTES

- MCEGold 3.2.11 is *only* compatible with Windows 10 or 11 and M-Series testers.
- **Windows 7 users - DO NOT TRY TO UPDATE** to MCEGold 3.2.11. Windows 7 compatibility ended with MCEGold 3.1.2 SP2. If you do try to update, MCEGold will become inoperable.
- Upgrading from a version prior to MCEGold 3.1.2 requires a new license key. Contact PdMA Technical Support (813-774-9982) for a new license key.
- MCEGold Word Add-in is NOT compatible with MS Word 2010. Templates created with any version older than MS Word 2007 may not be functional and may cause conflicts with the MCEGold software.
- MCEGold 3.2.11 requires that Word Add-in be uninstalled prior to installation or upgrade.
- MCEGold 3.2.11 requires that all SQL versions older than 2017 be uninstalled prior to installation or upgrade.
- MCEGold 3.2.11 requires that all Sentinel System Driver Installer programs prior to version 7.6.1 be uninstalled prior to installation or update from any MCEGold version prior to 3.2.
- To ensure application accessibility, the default installation location has been set to C:\PdMA Corporation.

- Databases attached to MCEGold 3.2.11 must be from MCEGold 3.1.2 SP1 or later and once updated with MCEGold 3.2.11 *will not* be compatible with older versions of MCEGold.
- Please make sure you allow sufficient time to update your database. Depending on the size of your database, updates may take an hour or longer.
- Assets opened with MCEGold 3.2.11 *will not* be compatible with older versions of MCEGold.
- If during installation you receive a message telling you “SQL Server System CLR Types requires the .Net Framework”, contact Technical Support (813-774-9982) for assistance.
- If you have any questions, please contact PdMA Technical Support (813-774-9982).

Minimum Requirements

Computer	Dell Latitude 5440 Laptop*
Processor	13th Gen Intel® Core™ i5 or equivalent
Resolution	14" FHD (1920x1080)
Operating System	Microsoft® Windows 10 or 11 (64 bit)
Memory	16.0+ G RAM
Ports/Drives	(1) USB Port in Rear or Side
Hard Disk	256GB SSD (30GB available)

* Original Windows 11 model shipped with PdMA testers. It is compatible with Windows 10 or 11, but it is not compatible with Windows 7. Using any other computer manufacturer in conjunction with the PdMA software may result in erratic computer behavior, including but not limited to:

- Power Management Issues
- Lock-up
- Communication Port Malfunction
- Driver Incompatibility
- Display Errors
- SQL Database Incompatibility
- Network Synchronization Issues

PREPARE FOR MCEGOLD

3.2.11 INSTALLATION

NOTE: If you have MCEGold 3.1.2 or later follow the instructions in *Upgrading From MCEGold 3.1.2 or Later* on page 4.

If you have any version prior to MCEGold 3.1.2 a full uninstall is required before installing version 3.2.11. See *Upgrading From a Version Prior to MCEGold 3.1.2*.

Upgrading From a Version Prior to MCEGold 3.1.2

Upgrading from a version prior to MCEGold 3.1.2 requires a new license key. Contact PdMA Technical Support (813-774-9982) for a new license key.

Backup

Before beginning the MCEGold uninstall, copy the Emaxprb.xml file only (not the folder) and the User Defined Report Templates to a safe location and make note of the location.

The default location for the files is listed below, however you may have chosen a different location during the original installation.

Emaxprb.xml

C:\PdMA Corporation\MCEGold\Emax

User Defined Detailed Report Templates (copy only .xml files):

C:\PdMA Corporation\MCEGold\Report\Templates\UserDefinedTemplates\Batch

User Defined Word Templates (copy only word files such as .doc, .docx, .dot, etc.):

C:\PdMA Corporation\MCEGold\Report\Templates\WordTemplates\UserDefined

Uninstall Older Versions of SQL Server

If any version of Microsoft SQL Server prior to Microsoft SQL Server 2017 (such as 2005, 2008, 2012, 2014, 2016, etc.) exists on your computer, proceed with the *Uninstall Older Versions of SQL Server* section followed by the *Uninstall Word Add-in*, *Uninstall Sentinel System Driver Installer*, and *Uninstall MCEGold* sections below.

If only Microsoft SQL Server 2017 exists on your computer do not uninstall it and proceed to the section *Uninstall Word Add-in*.

There are several components that begin with Microsoft SQL Server 20XX, they should all be removed starting with Microsoft SQL 2008 EXCEPT Microsoft SQL Server 2017.

1. Select Start, Settings, Apps.
2. Scroll down to locate and highlight Microsoft SQL Server 2008 from the list.
3. Highlight it and click **Uninstall**.
4. Follow the on-screen prompts.
5. Click **Finish** when the “Uninstall Complete” message is received. Do not close the window.
6. After uninstalling Microsoft SQL 2008, repeat from step 2 uninstalling all components that begin with Microsoft SQL Server 20XX. Reminder do not uninstall Microsoft SQL Server 2017 (or later)!
7. Do not close the window.
8. Locate and uninstall all Microsoft System CLR Types for SQL Server prior to CLR type version 2017.
9. Repeat step 6 until all older CLR Types have been removed.
10. Click **Finish** when the “Uninstall Complete” message is received.
11. Do not close the window.
12. Continue to *Uninstall Word Add-in*.

Uninstall Word Add-in

Note: If you have MCEGold Word Add-in installed, you need to uninstall it before upgrading to MCEGold 3.2.11. If it is not installed, proceed to *Uninstall MCEGold*.

1. Select Start, Settings, Apps.
2. Scroll down to locate the MCEGold Add-in.
3. Highlight it and click **Uninstall**.
4. Follow the on-screen prompts.
5. Click **Finish** when the “Uninstall Complete” message is received.
6. Do not close the window.
7. Continue to *Uninstall Sentinel System Driver Installer*.

Uninstall Sentinel System Driver Installer

MCEGold 3.2.11 requires that all Sentinel System Driver Installer programs prior to version 7.6.1 be uninstalled prior to installation or update from any MCEGold version prior to 3.2.

1. If the Sentinel System Driver Installer 7.5.7 programs file is present highlight it and click Uninstall and follow the on-screen prompts. If it is not present proceed to Step 3.
2. Click Finish when the “Uninstall Complete” message is received.
3. Reboot the computer.
4. Continue to Uninstall MCEGold.

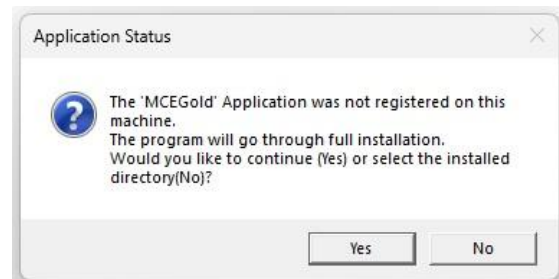
Uninstall MCEGold

Note: If you have MCEGold icons pinned to your Taskbar, it is necessary to unpin them before beginning the uninstall. Right click on the icon and select “Unpin from taskbar”.

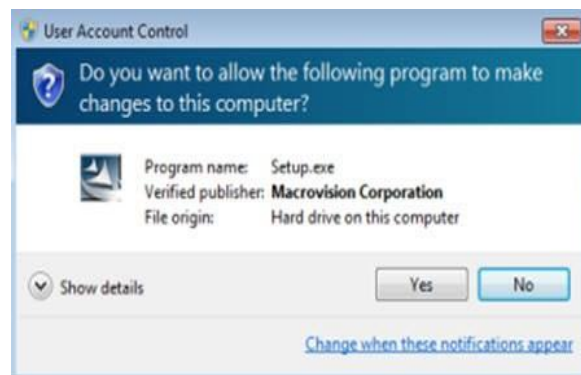
1. Select Start, Settings, Apps.
2. Scroll down to locate MCEGold Version X.X.X.
3. Highlight it and click **Uninstall**.
4. Follow the on-screen prompts.
5. Click **Finish** when the “Uninstall Complete” message is received.
6. Do not close the window.
7. If present locate the PdMA MCEMAX Tester (Driver Removal) file. Highlight it and click **Uninstall** and follow the on-screen prompts. If it is not present proceed to Step 9.
8. Click **Finish** when the “Uninstall Complete” message is received.
9. Locate the C:\PdMA Corporation folder and delete it. The subfolders will be deleted also. After the installation of MCEGold 3.2.11 the new folder location will be C:\PdMA Corporation\....
10. Reboot the computer.
11. Continue to *MCEGold 3.2.11 Installation*.

MCEGold 3.2.11 INSTALLATION

1. If installing on a tester, disconnect the USB cable from the tester computer.
2. Insert the MCEGold 3.2.11 USB flash drive into the USB **port**. Select Run, setup.exe from the AutoPlay window. If the installation does not begin automatically, run setup.exe from the USB flash drive.
3. If the PdMA Corporation folder has been deleted before the 3.2.11 installation, then an Application Status window pops up informing you that a full installation is needed. Click **Yes**.



4. If you see the User Account Control screen, click **Yes**.

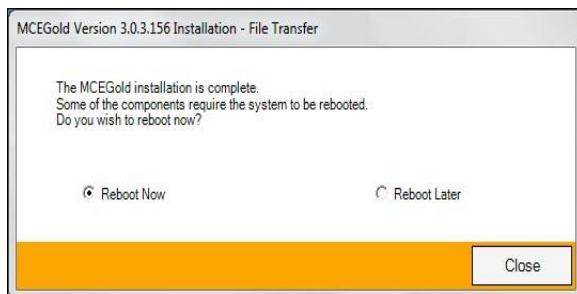


5. The License Agreement window opens. Read the PdMA license and select the “I Accept” option button. The **Next** button becomes visible. Click **Next**.

Note: If you do not accept the terms, the **Next** button is not visible, you can only click **Cancel**, which closes the software without installing it.



6. In the License Key window enter your Company Name and License Key exactly as provided by PdMA. You may copy and paste the license key using the paste button.
7. When the license has been verified a green check appears. The **Next** button appears. Click **Next**.
8. In the Installation Path window, accept the default shown in the text box (recommended) for the location to install the MCEGold program folder or use the browse (...) button to select an alternate location, make a note of it for your future use, and click **Next**. Note: It is not suggested to use an alternate location because that can cause conflict and Windows rights problems.
9. When prompted, click **Install Components**. Some components may require additional prompts.
10. When the installation of components is complete the **Next** button appears. Click **Next**.
11. A progress bar shows the progress of copying files to your computer.
12. When the installation is complete you must reboot your system. Select the Reboot Now option and click **Close**.



13. After rebooting, locate and copy the backup Emaxprb.xml file and the User Defined Report Templates back into their appropriate locations.

The default location for the files is listed below, however you may have chosen a different location during the original installation.

Emaxprb.xml

C:\PdMA Corporation\MCEGold\Emax

User Defined Detailed Report Templates (copy only .xml files):

C:\PdMA

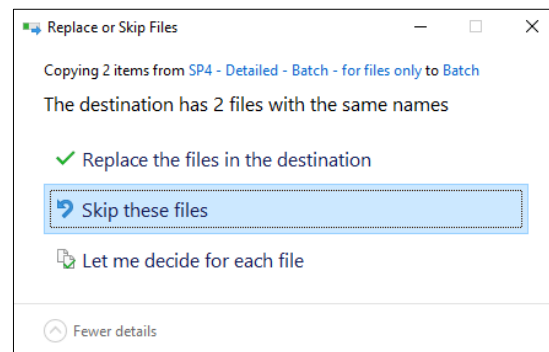
Corporation\MCEGold\Report\Templates\User DefinedTemplates\Batch

User Defined Word Templates (copy only word files such as .doc, .docx, .dot, etc.):

C:\PdMA

Corporation\MCEGold\Report\Templates\Word Templates\UserDefined

If you see a message like that shown below, select "Skip these files". Note that the number of items may be different than shown in this example.



14. If you wish to create or modify Word Report Templates, the MS Word AddIn needs to be reinstalled. To install the MS Word Addin refer to Application Note MS-Word AddIn USB Installation Procedure available on our website at <https://pdma.com/news-and-resources/application-notes/>.
15. Remove the MCEGold 3.2.11 USB flash drive from the computer.
16. If installing on a tester, re-connect the USB cable to the tester computer.

Upgrading From MCEGold 3.1.2 or Later

Backup

Before beginning the MCEGold installation copy the Emaxprb.xml file only (not the folder) and the Report Templates to a safe location and make note of the location.

The default location for the files is listed below, however you may have chosen a different location during the original installation.

Emaxprb.xml

C:\PdMA Corporation\MCEGold\Emax

User Defined Detailed Report Templates (copy only .xml files):

C:\PdMA Corporation\MCEGold\Report\Templates\UserDefinedTemplates\Batch

User Defined Word Templates (copy only word files such as .doc, .docx, .dot, etc.):

C:\PdMA Corporation\MCEGold\Report\Templates\WordTemplates\UserDefined

Uninstall Older Versions of SQL Server

If any version of Microsoft SQL Server prior to Microsoft SQL Server 2017 (such as 2005, 2008, 2012, 2014, 2016, etc.) exists on your computer, proceed with the *Uninstall Older Versions of SQL Server* section followed by the *Uninstall Word Add-in* and *Uninstall Sentinel System Driver Installer* sections below.

If only Microsoft SQL Server 2017 exists on your computer do not uninstall it and proceed to the section *Uninstall Word Add-in*.

There are several components that begin with Microsoft SQL Server 20XX, they should all be removed starting with Microsoft SQL 2008 EXCEPT Microsoft SQL Server 2017.

1. Select Start, Settings, Apps.
2. Scroll down to locate and highlight Microsoft SQL Server 2008 from the list.
3. Highlight it and click **Uninstall**.
4. Follow the on-screen prompts.
5. Click **Finish** when the “Uninstall Complete” message is received. Do not close the window.
6. After uninstalling Microsoft SQL 2008, repeat from step 2 uninstalling all components that begin with Microsoft SQL Server 20XX. Reminder do not uninstall Microsoft SQL Server 2017 (or later)! Do not close the window.
7. Do not close the window.

8. Locate and uninstall all Microsoft System CLR Types for SQL Server prior to CLR type version 2017.
9. Repeat from step 6 until all older CLR Types have been removed.
10. Click **Finish** when the “Uninstall Complete” message is received.
11. Do not close the window.
12. Continue to *Uninstall Word Add-in*.

Uninstall Word Add-in

Note: If you have MCEGold Word Add-in installed, you need to uninstall it before upgrading to MCEGold 3.2.11. If it is not installed, proceed to *MCEGold 3.2.11 Installation*.

1. Select Start, Settings, Apps.
2. Scroll down to locate the MCEGold Add-in.
3. Highlight it and click **Uninstall**.
4. Follow the on-screen prompts.
5. Click **Finish** when the “Uninstall Complete” message is received.
6. Reboot the computer.
7. Continue to *Uninstall Sentinel System Driver Installer*.

Uninstall Sentinel System Driver Installer

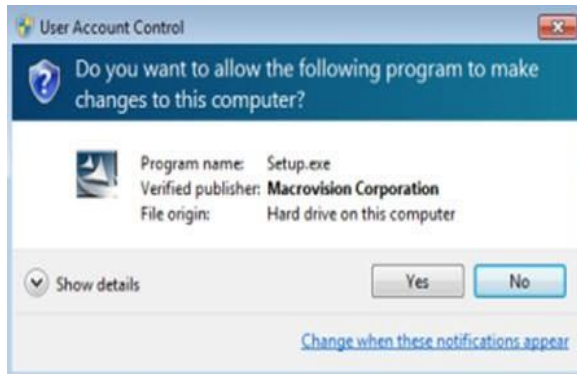
MCEGold 3.2.11 requires that all Sentinel System Driver Installer programs prior to version 7.6.1 be uninstalled prior to installation or update from any MCEGold version prior to 3.2.

1. If the Sentinel System Driver Installer 7.5.7 programs file is present highlight it and click **Uninstall** and follow the on-screen prompts. If it is not present proceed to Step 3.
2. Click **Finish** when the “Uninstall Complete” message is received.
3. Reboot the computer.
4. Continue to *MCEGold 3.2.11 Installation*.

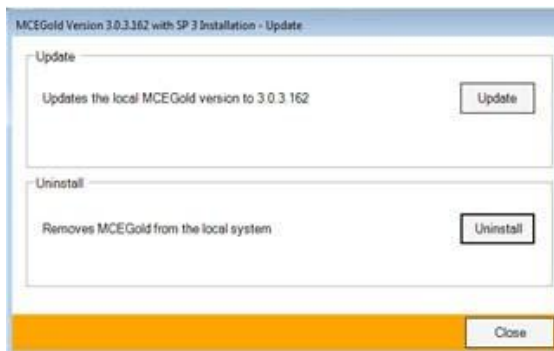
MCEGold 3.2.11 Installation

NOTE: Some on-screen prompts and messages during the installation process are controlled by the Windows operating system and are out of PdMA's control. Every effort has been made to include their possible appearance and the action you should take. However, if you are unsure, please contact Technical Support help at 813-774-9982.

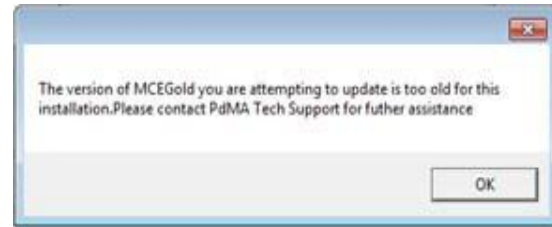
1. If installing on a tester, disconnect the USB cable from the tester computer.
2. Insert the MCEGold 3.2.11 USB flash drive into the USB port. Select Run, setup.exe from the AutoPlay window. If the installation does not begin automatically, run setup.exe from the USB flash drive.
3. If you see the User Account Control screen, click **Yes**.



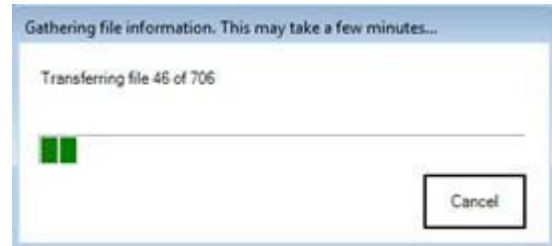
4. If there is an existing MCEGold version installed on your computer, you will see the MCEGold Update screen. Click **Update**.



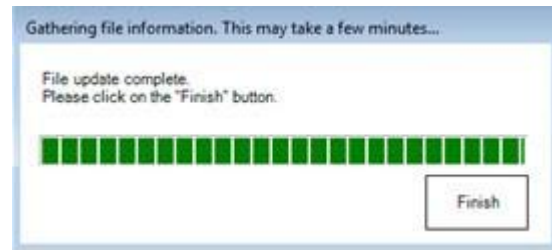
NOTE: If you have a version prior to MCEGold 3.1.2 you will receive the error message shown below. Do **NOT** proceed. Contact Technical Support (813-774-9982).



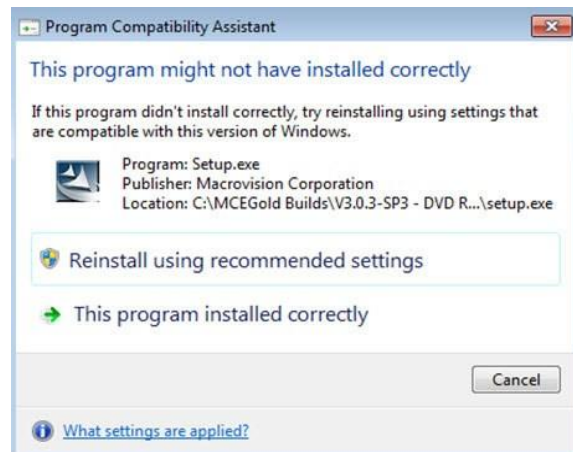
5. The status update window displays.



6. When the update is complete, click **Finish**.



7. If the Program Compatibility Assistant screen displays, select *This program installed correctly*.



8. Locate and copy the backup Emaxprb.xml file and the User Defined Report Templates back into their appropriate locations.

The default location for the files is listed below, however you may have chosen a different location during the original installation.

Emaxprb.xml

C:\PdMA Corporation\MCEGold\Emax

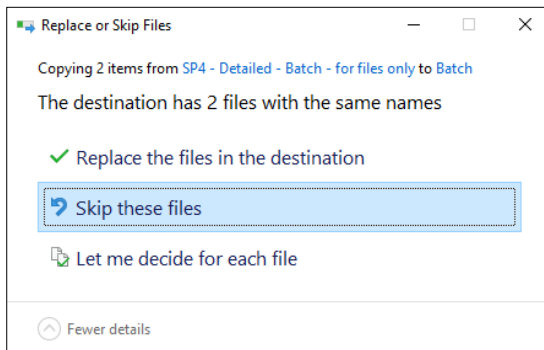
User Defined Detailed Report Templates (copy only .xml files):

C:\PdMA Corporation\MCEGold\Report\Templates\User Defined Templates\Batch

User Defined Word Templates (copy only word files such as .doc, .docx, .dot, etc.):

C:\PdMA Corporation\MCEGold\Report\Templates\Word Templates\UserDefined

If you see a message like that shown below, select “Skip these files”. Note that the number of items may be different than shown in this example.



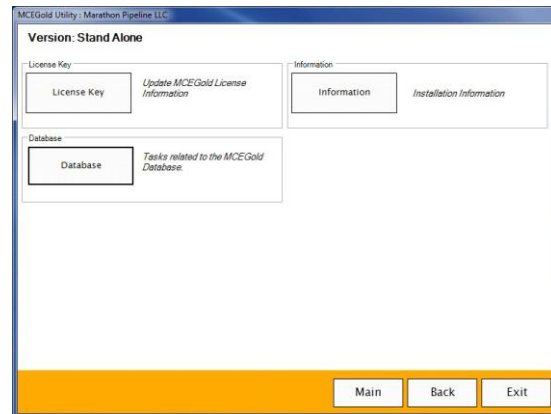
9. If you wish to create or modify Word Report Templates, the MS Word AddIn needs to be reinstalled. To install the MS Word Addin refer to Application Note MS-Word AddIn USB Installation Procedure available on our website at <https://pdma.com/news-and-resources/application-notes/>.
10. Remove the MCEGold 3.2.11 USB flash drive from the computer.
11. If installing on a tester, re-connect the USB cable to the tester computer.
12. Continue to the *Database Setup* section.

DATABASE SETUP

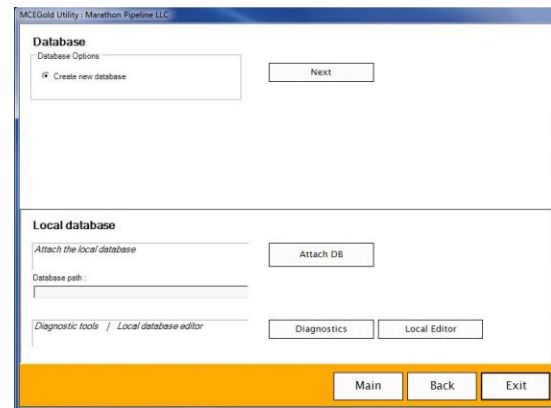
Note: This procedure is for connecting to an existing database that is to be upgraded to MCEGold 3.2.11. To connect to an existing database, please follow the instructions below.

1. Ensure you have properly backed up the database you are converting.

2. Open the Utility program and click the **Database** button.



3. Click **Attach DB** as shown in the screen below.

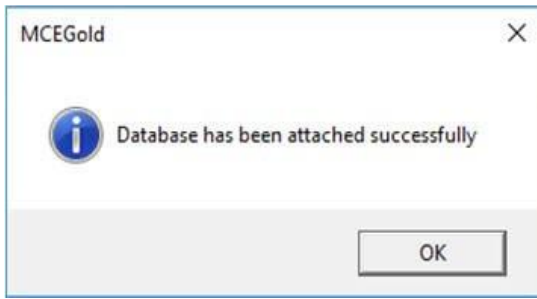


4. Navigate to the database location on your computer and select the desired database.

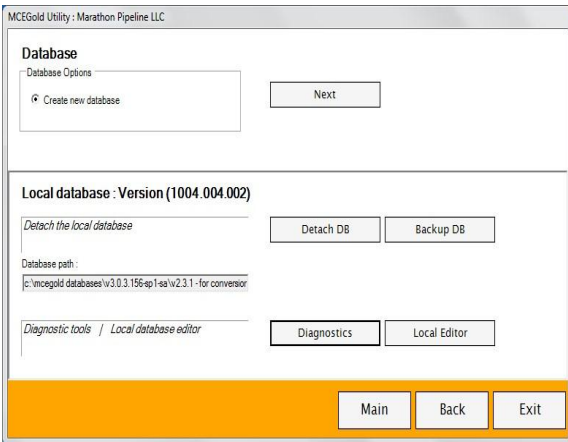
If you receive the following message: “The database you selected was created with an older SQL version”, the database needs to be upgraded to SQL 2017. **Stop!** Click **No**. Do **NOT** proceed! Contact Technical Support.



5. If the database is attached properly, you will see the following window. Click **OK**.



6. The MCEGold Utility Database Window opens. Click **Exit**.



START MCEGOLD

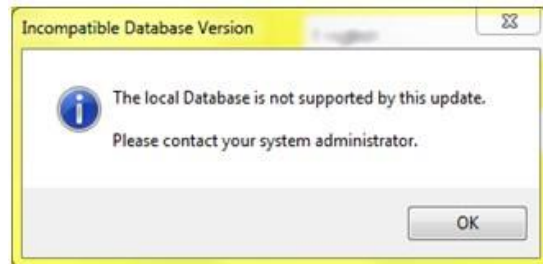
1. Start MCEGold.
2. If the database window is empty, select a database using the Search button (...) located on the right side of the Site textbox. This opens your computer navigator window which allows you to search for a database. When the database has been selected, click **Open**.
3. Verify login parameters on the right side of the window are correct and click **OK**.

NOTE: If no databases are available, click **Cancel** to exit out of MCEGold, and contact Technical Support at 813-774-9982.

If you receive the following message: "The database you selected was created with an older SQL version", the database needs to be upgraded to SQL 2017. **Stop!** Click **No**. Do **NOT** proceed! Contact Technical Support.



If you receive the following "The local database is not supported by this update" message, the attached database is too old for conversion and needs to be updated to MCEGold 3.1.2 or later prior to updating to MCEGold 3.2.11. Contact your system administrator.



If you receive the following "Incompatible Database Version" message when trying to start MCEGold, you are attempting to run MCEGold with a database that is older than MCEGold 3.2.11. You will be prompted to update the database. If you have properly backed up your existing database, click **Yes** to run the update. If you have not backed up your existing database, click **No**, backup the database, and then perform the Database Setup procedure.

NOTE: Please make sure you allow sufficient time to update your database.

