

# TECHNOTE 2003

## ISSUED

November 2020

## SUBJECT

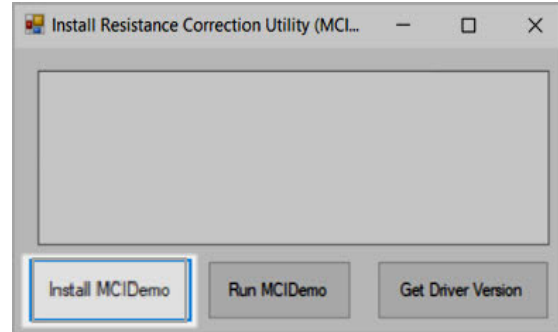
Release of the Resistance Correction Utility Application.

## DESCRIPTION

The Resistance Correction Utility is a self executable program used by M-Series customers to modify firmware located on the MCE tester hardware. The installation of the application allows a single computer to run the correction on multiple testers.

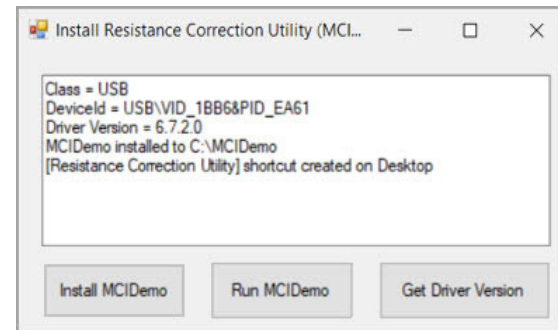
## PROCEDURE

1. Connect the computer to the tester using the USB.
2. Verify the charged battery is installed into the MCE tester.
3. Verify MCEGold is NOT running (Closed).
4. Copy the Resistance Correction Utility folder (MCIDemoInstall) sent by PdMA to the tester computer.
5. Open the folder and double click the MCIDemoInstall.exe file to run the program.
6. In the Install Resistance Correction Utility window **click** the Install MCIDemo button as shown in Figure 1.



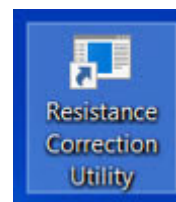
**Figure 1**

7. After a short delay the utility will communicate with the tester automatically. Driver details will populate the Correction Utility Window. Shown in Figure 2.



**Figure 2**

NOTE: A Resistance Correction Utility shortcut, shown in Figure 3, is created on the desktop.



**Figure 3**

8. Close Install Resistance Correction Utility window.

9. Double click the Resistance Correction Utility button on the desktop.
10. Successful communication is indicated by the illumination of the LED light surrounding the MCE test lead connector on the MCE tester and the tester number displaying in the Tester # text box. Shown in Figure 4.

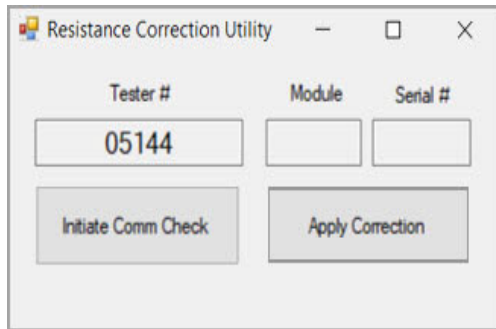


Figure 4

11. Click the Apply Correction button to apply the calibration correction. Shown in Figure 5.

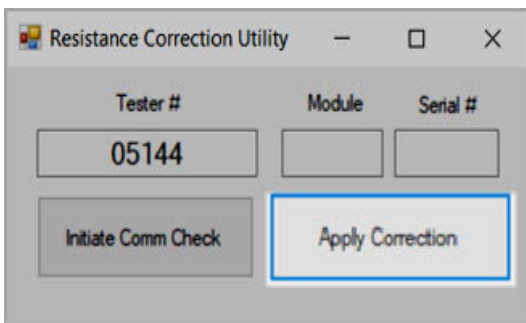


Figure 5

12. After successful application of the calibration correction, the Module and Serial # text boxes will be populated and an MCIDemo window appears indicating the correction was successful. Shown in Figure 6.

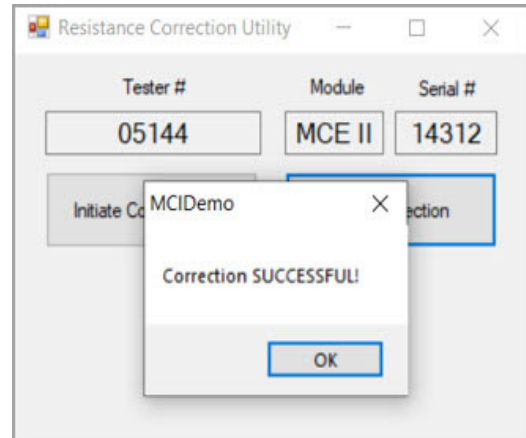


Figure 6

13. **Click** OK and close remaining windows.
14. With the application installed on your computer you can repeat steps 9 - 13 on other testers.

**NOTE:** Failure to connect the computer to the tester, install the battery, or to close MCEGold will result in the error message seen in Figure 7. Perform the activities listed and **click** OK. Return to Step 5.

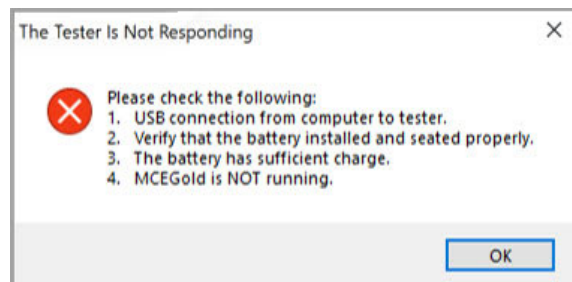


Figure 7