

TECHNOTE 1601

ISSUED

April 2016

SUBJECT

Release of MCEGold® 3.0.

DESCRIPTION

MCEGold 3.0 is an upgrade from MCEGold 2.6.2.

MCEGOLD 3.0 INSTALLATION

Note:

- MCEGold 3.0 is only compatible with Windows 7.
- If you have a previous version of MCEGold a full uninstall is required prior to the 3.0 installation.
- MCEGold 3.0 is only compatible with M-Series testers.
- MCEGold 3.0 is currently available only for Stand Alone.
- To ensure application accessibility, the default installation location has been set to C:\PdMA Corporation.
- Databases attached to MCEGold 3.0 must be from MCEGold 2.5.1 or later and once updated with 3.0 *will not* be compatible with older versions of MCEGold.
- Assets exported with MCEGold 3.0 *will not* be compatible with older versions of MCEGold.
- If you have any questions, please contact PdMA Tech Support (813-621-6463 ext. 251).

Minimum Requirements:

Computer	Dell Latitude E6440 Laptop*
Processor	2+ GHz Intel i5 or equivalent
Resolution	1600 x 900/1920 x 1080 (small font)
Operating System	Microsoft® Windows 7 SP1 32-or 64 bit**
Memory	4.0+ G RAM***
Ports/Drives	(1) USB Port in Rear or Side
Hard Disk	20G Available

* Using any other computer manufacturer in conjunction with the PdMA software may result in erratic computer behavior; not limited to but including:

- Power Management Issues
- Lock-up
- Communication Port Malfunction
- Driver Incompatibility
- Display Errors
- SQL Database Incompatibility
- Network Synchronization Issues.

** For International Customers: Windows 7 Ultimate 32 or 64-bit.

***If you are upgrading from MCEGold 2.6.1 - 2.6.2 verify that your computer has at least 4G of RAM.

Stand Alone Users

NOTE; MCEGold 3.0 requires a full uninstall of existing MCEGold before installing version 3.0.

Uninstall MCEGold

Backup

Before beginning the MCEGold uninstall, copy the Emaxprb.xml files and complete Templates folder to a safe location and make note of the location.

The default location for the files is listed below, however you may have chosen a different location during the original installation.

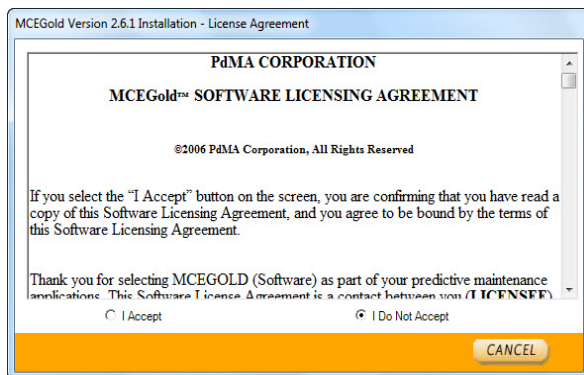
C:\PdMA Corporation\MCEGold\Emax
C:\PdMA Corporation\MCEGold\Report

1. Select Start, Control Panel, click on the Programs and Features icon.

2. In the Uninstall or change a program window scroll down to locate and select the MCEGold version from the list.
3. Click **Uninstall** located above the list and follow on screen prompts.
4. Click **Finish** when the “Uninstall Complete” message is received.
5. Locate the PdMA MCEMAX® Tester (Driver Removal) file and click **Uninstall** located above the list and follow the on screen prompts.
6. Click **Finish** when the “Uninstall Complete” message is received.
7. Locate the C:\PdMACorporation folder and delete it. The subfolders will be deleted also. After the installation of MCEGold 3.0 the new folder location will be C:\PdMA Corporation\....
8. Reboot your computer.
9. Go to step one in the *Install - MCEGold 3.0* section.

Install MCEGold 3.0

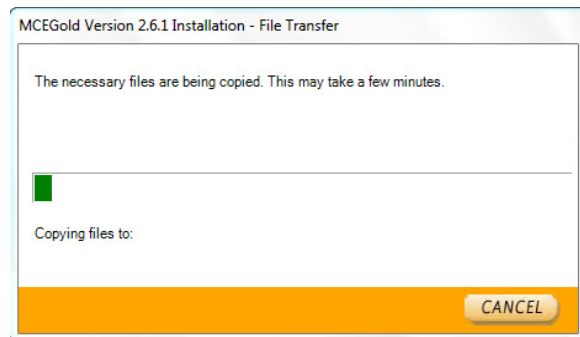
1. Insert the MCEGold 3.0 USB flash drive into the USB port. If the installation does not begin automatically, run Setup.exe from the USB flash drive. (Select Run setup.exe from the AutoPlay window).
2. The License Agreement window opens. Read the PdMA license and select the “I Accept” option button. The **Next** button becomes visible. Click **Next**.
 Note: If you do not accept the terms, the **Next** button is not visible, you can only click **Cancel**, which closes the software.



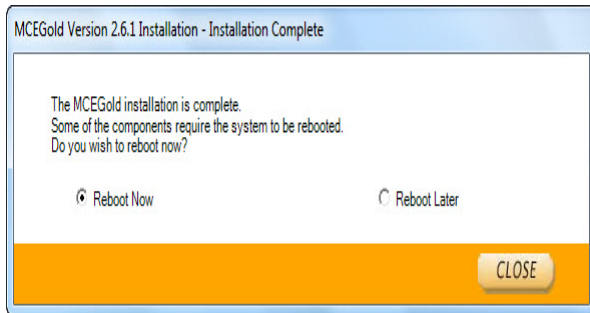
3. In the License Key window enter your Company Name and License Key exactly as provided by PdMA. It is not case sensitive. You may copy and paste the license key using the paste button.
4. Click **Submit** (located to the right of the Company Name space). When the license has been verified a green check appears. The **Next** button appears. Click **Next**.
5. In the Installation Path window, accept the default shown in the text box (recommended) for the location to install the MCEGold program folder or using the drop-down list select a alternate location, make a note of it for future use, and click **Next**.
6. When prompted, click **Install Components**. Some components may require additional prompts.

Note: When installing MCEGold, a Word Add-in driver is installed. You may receive a message informing you that “Windows can’t verify the publisher of this driver software.” Select “Install this driver software anyway”.

7. When the installation of components is complete the **Next** button appears. Click **Next**.
8. A progress bar shows the progress of copying files to your computer.



9. When the installation is complete you must reboot your system. Select the Reboot Now option and click **Close**.



After rebooting, locate and copy the backup Emaxprb.xml files and the Template folder back into their appropriate locations in

- C:\PdMA Corporation\MCEGold\Emax
- C:\PdMA Corporation\MCEGold\Report

10. Answer Yes to “Merge the folder?” inquiry.
11. Remove the MCEGold 3.0 USB flash drive from the computer.