

TECHNOTE 1301

ISSUED

April, 2013

SUBJECT

Installation of MCEGold 2.6.1

DESCRIPTION

The complete highlights for MCEGold 2.6.1 are located on the installation disc. This release contains the following features: Power test retest button, Demod user adjustable peak search, Rotor Eval 5th harmonic button, Power Phasor data validation, Asset information pane, Site Condition update, M-Series compatibility, and Six Channel In-Rush test (M series only).

MCEGOLD 2.6.1 INSTALLATION

Note:

- If you have a Microsoft Windows XP operating system, contact PdMA Tech Support (813-621-6463 ext. 251) prior to the 2.6.1 installation.
- MCEGold 2.6.1 requires a full uninstall of MCEGold.
- MCEGold 2.6.1 is not compatible with testers requiring a Data Acquisition Card (DAQ).
- Installing the MCEGold 2.6.1 will require an upgrade of the Microsoft SQL Server 2005 to SQL Server 2008, if not already completed
- To ensure application accessibility, the new default installation location has been set to C:\PdMA Corporation.
- Databases attached to MCEGold 2.6.1 must be from MCEGold 2.4 or later.
- Assets exported from MCEGold 2.6.1 *will not* be compatible with older versions of MCEGold.

Minimum Requirements:

Computer	Dell Latitude E6430 Laptop*
Processor	2+ GHz Intel i5 or equivalent
Resolution	1600 x 900
Operating System	Microsoft Windows 7 SP1 32- or 64 bit**
Memory	2.0+ G RAM
Ports/Drives	(2) USB Ports in Rear or Side (M-Series tester has (1) USB Port)
Drives	24x CD-RW + DVD Drive
Hard Disk	20G Available

* Using any other computer manufacturer in conjunction with the PdMA software may result in erratic computer behavior; not limited to but including:

- Power Management Issues
- Lock-up
- Communication Port Malfunction
- Driver Incompatibility
- Display Errors
- SQL Database Incompatibility
- Network Synchronization Issues.

** For International Customers: Windows 7 Ultimate 32 or 64-bit.

Server Database Update for Network Users

Note: Ensure the user account used to update the server has “sysadmin” permissions.

There is a separate application on the Installation Disc to update the network database on the server. ***The database must be updated on the server first, then the desktops and field testers.***

If the update is installed on a network field tester before the server database is updated, a warning message appears informing you the database is an old version and to contact your system administrator.

1. Back up the MCEGold database.
2. Insert the disc into the drive. If the disc starts automatically, click **Exit** and proceed to the next step.

3. Locate the MCEGold Database Server Update folder on the MCEGold 2.6.1 Disc.
4. Click on the MCEGold Database Server Update.exe file.
5. The Server Information window opens. Fill in the Server, Database, Login, and Password information.
6. Click **Run Update**. The progress status will display on the window.
7. When the update complete message displays, close the window.

Stand Alone Users/Field Tester

Note: MCEGold 2.6.1 requires an upgrade of the Microsoft SQL Server 2005 to SQL Server 2008. Therefore, any stand alone database opened will be updated to SQL Server 2008 and will no longer open on another machine running an older version of MCEGold using SQL Server 2005.

MCEGold Prior to 2.4 or Windows XP

If you are updating from an MCEGold version older than 2.4 or Microsoft Windows XP operating system you must first call PdMA Tech Support (813-621-6463 ext. 251).

MCEGold 2.4 and Later

From your Control Panel/Program and Features, verify which version of Microsoft SQL Server is installed on your computer.

If Microsoft SQL Server 2005 exists on your computer proceed to the *Uninstall SQL Server 2005* section followed by the *Uninstall MCEGold* section below. There are several components that begin with Microsoft SQL Server 2005, they should all be removed EXCEPT Microsoft SQL Server 2005 Compact Edition (ENU).

If Microsoft SQL Server 2008 and possibly Microsoft SQL Server 2005 Compact Edition (ENU) exists on your computer do not uninstall them. Go to the section *Uninstall MCEGold*.

Uninstall SQL Server 2005

1. Select Start, Control Panel, and click the Programs and Features icon.
2. In the Uninstall or change a program window scroll down to locate and select Microsoft SQL Server 2005 from the list.
3. Click **Uninstall** - located above the list and follow the on screen instructions.
4. Click **Finish** when the “Uninstall Complete” message is received. Do not close the window.
5. Repeat from step 2 uninstalling all components that begin with Microsoft SQL Server 2005. DO NOT uninstall Microsoft SQL Server 2005 Compact Edition (ENU).
6. Close the Uninstall or change a program window when all components have been uninstalled.
7. Reboot the computer.

Uninstall MCEGold

Backup

Before beginning the MCEGold uninstall copy the MCECal.xml and Emaxprb.xml files and complete Templates folder to a safe location and make note of the location.

The default location for the files is listed below, however you may have chosen a different location during the original installation.

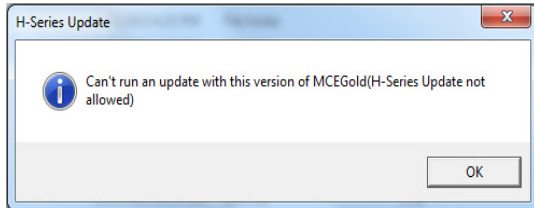
C:\Program Files\PdMA Corporation\MCEGold\Mce
C:\Program Files\PdMA Corporation\MCEGold\Emax
C:\Program Files\PdMA Corporation\MCEGold\Report

1. Select Start, Control Panel, click on the Programs and Features icon.
2. In the Uninstall or change a program window scroll down to locate and select the MCEGold version from the list.
3. Click Uninstall- located above the list and follow on screen prompts.
4. Click **Finish** when the “Uninstall Complete” message is received.
5. Go to step one in the *Install - MCEGold 2.6.1* section.

Install MCEGold 2.6.1

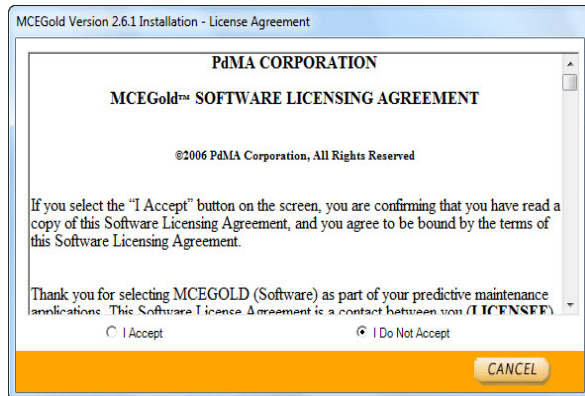
1. Insert the MCEGold 2.6.1 Disc into the drive. If the installation does not begin automatically, run Setup.exe from the disc. (Select Run setup.exe from the AutoPlay window).

If the H-Series Update window shown below appears, the previous version of MCEGold has not been uninstalled. Click **OK**. Remove the MCEGold 2.6.1 disc. Go to *Stand Alone Users/Field Tester* and perform the necessary steps.



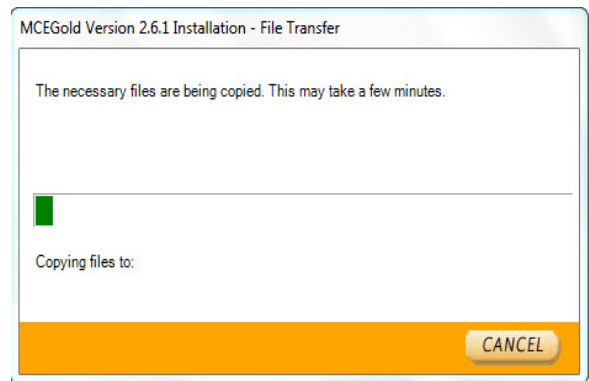
2. An Installer window displays the progress in preparing a guide for the setup process.
3. The License Agreement window opens. Read the PdMA license and select the “I Accept” option button. The **Next** button becomes visible. Click **Next**.

Note: If you do not accept the terms, the **Next** button is not visible, you can only click **Cancel**, which closes the software.

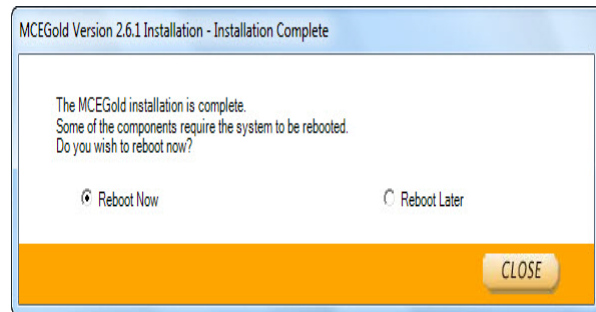


4. In the License Key window enter your Company Name and License Key exactly as provided by PdMA. It is not case sensitive. The License Key is **NOT** the same as the Module Activation Key, which activates various modules.
5. Click **Submit** (located to the right of the Company Name space). After the license has been verified the **Next** button appears. Click **Next**.

6. In the Installation Path window, accept the default shown in the textbox (recommended) for the location to install the MCEGold program folder or using the drop-down list select a alternate location, make a note of it for future use, and click **Next**.
7. When prompted, click **Install Components**.
8. When the installation of components is complete the **Next** button appears. Click **Next**.
9. A progress bar shows the progress of copying files to your computer.



10. When the installation is complete you must reboot your system. Select the Reboot Now option and click **Close**.



- After rebooting, locate and copy the backup MCECal.xml and Emaxprb.xml files and the Template folder back into their appropriate locations in
- C:\PdMA Corporation\MCEGold\Mce
 - C:\PdMA Corporation\MCEGold\Emax
 - C:\PdMA Corporation\MCEGold\Report
11. Answer Yes to the “OK to overwrite existing folder” inquiry.

INTERNATIONAL LANGUAGE

Currently the languages supported are English, Spanish, Chinese, Russian, and Portuguese. Plans are in process to add additional languages.

Activating Language Feature

In order to use the Language feature you must first enter the Module Activation Key and then install the Language Pack.

If a Module Activation Key did not come with your MCEGold 2.6.1 Disc or if your current Module Activation Key does not activate the Language package contact PdMA Corporation Technical Support at 813-621-6463 ext. 251.

The Language Pack file is available for download from our website (<http://www.pdma.com/PdMA-downloads.php>) or by contacting Technical Support at 813-621-6463 ext. 251.

Module Activation Key

Prior to starting MCEGold it is necessary to enter the Module Activation Key in the MCEGold Utility program. Entering the Module Activation Key once unlocks all language packs available.

1. Locate the Utility programs at:

C:\PdMACorporation\MCEGold\Utility\Utility.exe
or Start\All Programs\PdMA Corporation\Utilities.

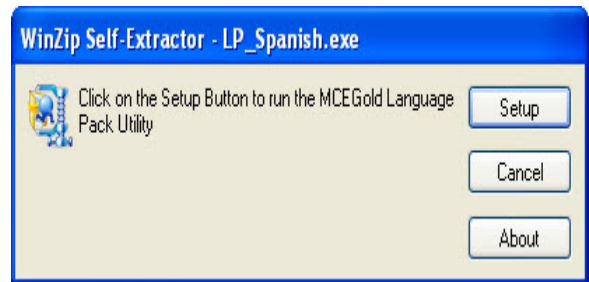
2. Double click the Utility.exe file.
3. In the Utility program click the License Key button.
4. Enter the Module Activation Key in the corresponding textboxes.
5. Click **Submit**, then **Exit**.

Installing Language Pack

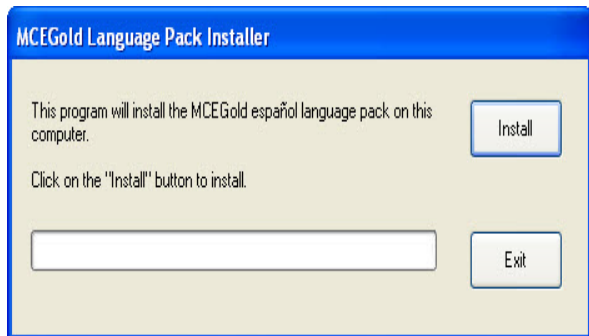
Language Pack downloads are found in the International Language Pack section on the download page of the PdMA website (<http://www.pdma.com/PdMA-downloads.php>).

1. Click the language pack desired.

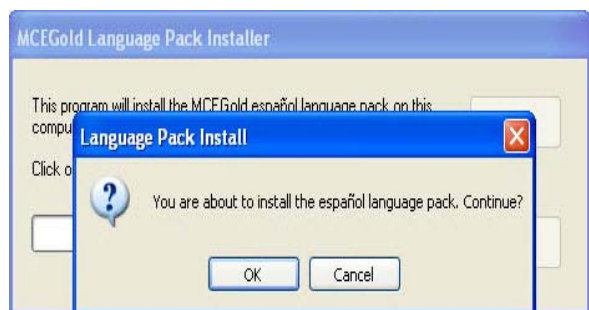
2. The File Download - Security Warning window opens. Click **Run**.
3. Click **Run** in the next File Download - Security Warning window.
4. A progress window appears. No action is required.
5. In the WinZip window click **Setup**.



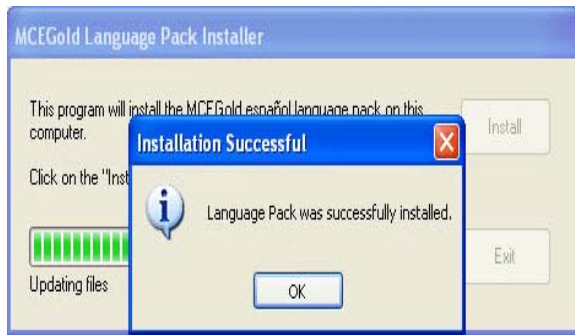
6. In the MCEGold Language Pack Installer window verify you are installing the desired MCEGold language pack on your computer and click **Install**.



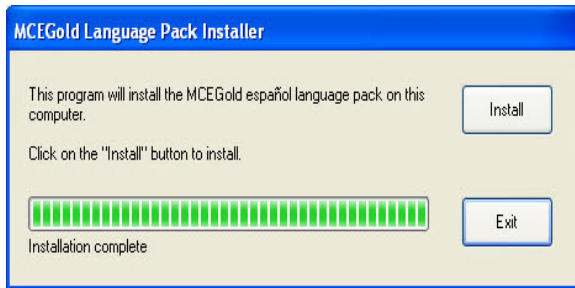
7. A second installation verification window asks you to verify the installation. Click **OK**.



8. Upon completion of the installation an Installation Successful window opens. Click **OK**.



9. To finish the installation, click **Exit** in the MCEGold Language Pack Installer window.



Starting Language Feature

1. Start MCEGold 2.6.1.
2. In the Login window click the arrow on the right side of the Language box.

Note: If you do not see all of the installed languages you need to cancel MCEGold and go to the Utility window to enter your Module Activation Key. See *Activating Language Feature* in this TechNote for instructions.

3. Select the desired language and click **OK**.

It is possible to revert to English by exiting MCEGold, restarting, and selecting English from the Language box in the Login window.