

# TECHNOTE 1902-N10

## ISSUED

August 2019

## SUBJECT

Release of MCEGold® 3.1.2 SP2 Network Version for Windows 10.

## DESCRIPTION

MCEGold 3.1.2 SP2 Network Version is an upgrade from MCEGold 3.1.2 SP1.

## PDMA CLOUD SERVICES

The network edition of MCEGold 3.1.2 SP2 supports access to PdMA Cloud Services. Please contact PdMA Technical Support (813-6216-6463 ext. 251) to discuss this option.

## NOTES

- MCEGold 3.1.2 SP2 is only compatible with Windows 10 and Windows 7 and M-Series testers.

- Upgrading from a version prior to MCEGold 3.1.2 requires a new license key. Contact PdMA (813-621-6463 ext. 251) for a new license key.

- Installation of MCEGold 3.1.2 SP2 on a Windows 10 computer uses a special installation procedure. For a Windows 7 installation refer to TechNote 1902-S7 (Stand Alone) or TechNote 1902-N7 (Network) as applicable.

- MCEGold Word Add-in is only compatible with MS Word 2007 and 2013. MCEGold Word Add-in is NOT compatible with MS Word 2010. Templates created with other versions of MS Word may not be functional and may cause conflicts with the MCEGold software.

- To ensure application accessibility, the default installation location has been set to C:\PdMA Corporation.

- Databases attached to MCEGold 3.1.2 SP2 must be from MCEGold 3.0.3 SP2 or later and once updated

with 3.1.2 SP2 *will not* be compatible with older versions of MCEGold.

- Please make sure you allow sufficient time to update your database. Depending on the size of your database, updates may take an hour or longer.

- Assets exported with MCEGold 3.1.2 SP2 *will not* be compatible with older versions of MCEGold.

- If during installation you receive a message telling you “SQL Server System CLR Types requires the .Net Framework”, contact tech support for assistance.

- If you have any questions, please contact PdMA Technical Support (813-621-6463 ext. 251).

## Minimum Requirements

Computer	Dell Latitude E5490 Laptop*
Processor	2+ GHz Intel i5 or equivalent
Resolution	1600 x 900/1920 x 1080 (small font)
Operating System	Microsoft® Windows 10 (32 or 64 bit)
Memory	4.0+ G RAM
Ports/Drives	(1) USB Port in Rear or Side
Hard Disk	20G Available

\* Using any other computer manufacturer in conjunction with the PdMA software may result in erratic computer behavior; not limited to but including:

- Power Management Issues
- Lock-up
- Communication Port Malfunction
- Driver Incompatibility
- Display Errors
- SQL Database Incompatibility
- Network Synchronization Issues.

## PREPARE WINDOWS 10 FOR MCEGOLD 3.1.2 SP2 INSTALLATION

NOTE: If you have MCEGold 3.1.2 or later follow the instructions in *Upgrading From MCEGold 3.1.2 or Later* on page 8.

If you have any version prior to MCEGold 3.1.2 a full uninstall is required before installing version 3.1.2 SP2. See *Upgrading From a Version Prior to MCEGold 3.1.2*.

## Upgrading From a Version Prior to MCEGold 3.1.2

Upgrading from a version prior to MCEGold 3.1.2 requires a new license key. Contact PdMA (813-621-6463 ext. 251) for a new license key.

### Backup

Before beginning the MCEGold uninstall, copy the Emaxprb.xml file only (not the folder) and the complete Templates folder to a safe location and make note of the location.

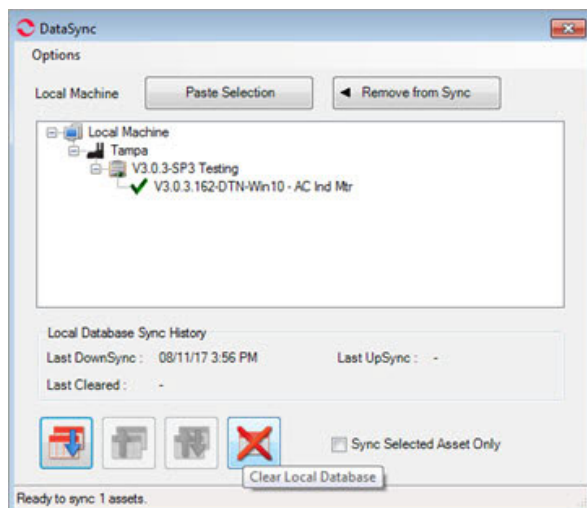
The default location for the files is listed below, however you may have chosen a different location during the original installation.

C:\PdMA Corporation\MCEGold\Emax  
C:\PdMA Corporation\MCEGold\Report

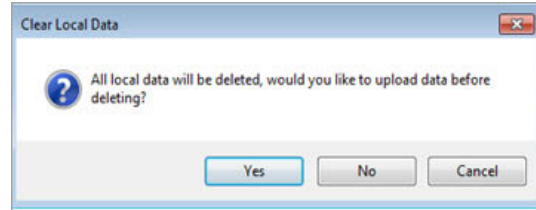
### Clear Local Database

NOTE: Before proceeding ensure all local database synchronization has been performed. Failure to synchronize before clearing the local database will result in loss of data. This procedure must be completed before the server database is updated.

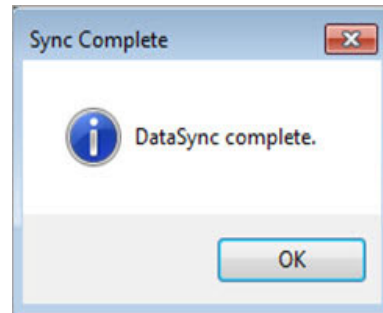
1. From the DataSync window, click **Clear Local Database**.



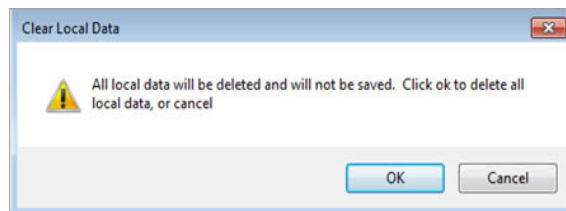
2. From the Clear Local Data window, click **Yes** to upload (UpSync) data, click **No** if you have already synchronized the data.



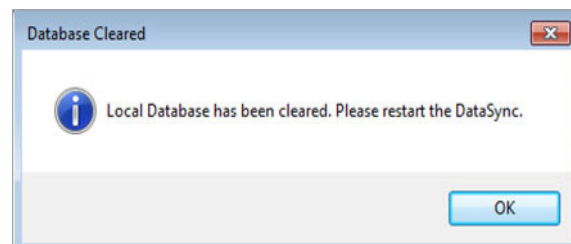
3. From the Sync Complete window, click **OK**.



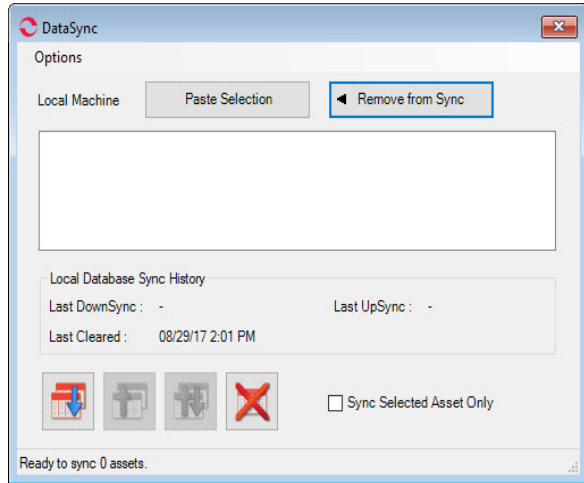
4. From the next Clear Local Data window, click **OK** to delete all local data.



5. From the Database Cleared window, click **OK**.



6. Reopen the DataSync window to ensure the database has been cleared, as shown in figure below. If it did not clear contact Technical Support.



### Update Server Database for Network Users

NOTE: Ensure the user account being used to update the server has “sysadmin” permissions.

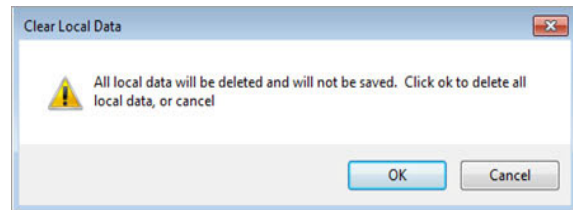
Please make sure you allow sufficient time to update your database. Depending on the size of your database, updates may take an hour or longer.

There is a separate application on the Installation USB flash drive to update the network database on the server. **The database must be updated on the server first, then the desktops and field testers.**

If the update is installed on a network field tester before the server database is updated, a warning message appears informing you the database is an old version and to contact your system administrator.

1. Backup the MCEGold server database.
2. Insert the MCEGold 3.1.2 SP2 USB flash drive into the USB port. If the drive starts automatically, click **Exit** and proceed to the next step.
3. Locate the MCEGold Database Server Update folder on the MCEGold 3.1.2 SP2 USB flash drive.
4. Click on the MCEGold Database Server Update.exe file.

5. The Server Information window opens. Fill in the Server, Database, Login, and Password information. The Login and Password will depend on your authentication (Windows/SQL).
6. Click **Run Update**. The progress status will display on the window.
7. When the update complete message displays, close the window.
8. From the next Clear Local Data window, click **OK** to delete all local data.



### Uninstall

Note: If you have MCEGold icons pinned to your Taskbar, it is necessary to unpin them before beginning the uninstall. Right click on the icon and select “Unpin from taskbar”.

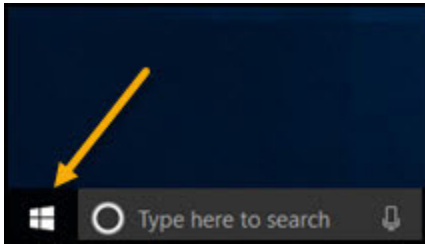
1. Select Start, Settings, Apps and locate MCEGold.
2. Highlight the MCEGold Version X.X.X.
3. Click **Uninstall** and follow on-screen prompts.
4. Click **Finish** when the “Uninstall Complete” message is received.
5. Locate the PdMA MCEMAX Tester (Driver Removal) file. Highlight it and click **Uninstall/Change** located above the list and follow the on-screen prompts.
6. Click **Finish** when the “Uninstall Complete” message is received.
7. Locate the C:\PdMACorporation folder and delete it. The subfolders will be deleted also. After the installation of MCEGold 3.1.2 SP2 the new folder location will be C:\PdMA Corporation\....
8. Reboot your computer.
9. Go to the Disable Driver Signature Enforcement section.

## Disable Driver Signature Enforcement

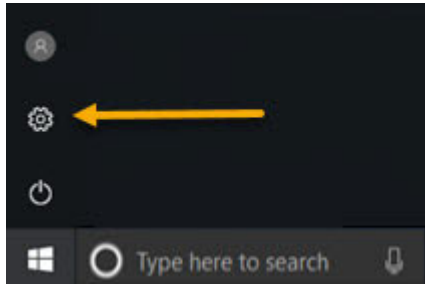
NOTE: To install MCEGold 3.1.2 SP2 on a Windows 10 operating system, the operating system must be in the “Disable driver signature enforcement” mode.

Use the following steps to enter the Disable Driver Signature Enforcement mode.

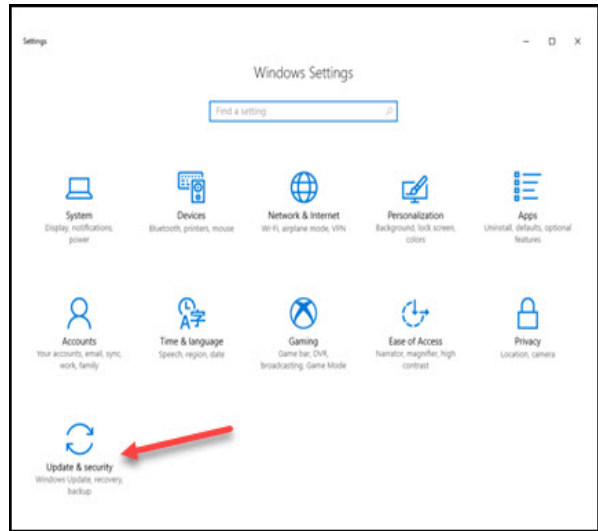
1. From the main Windows 10 screen, click the **Start** button in the lower left corner of the computer screen.



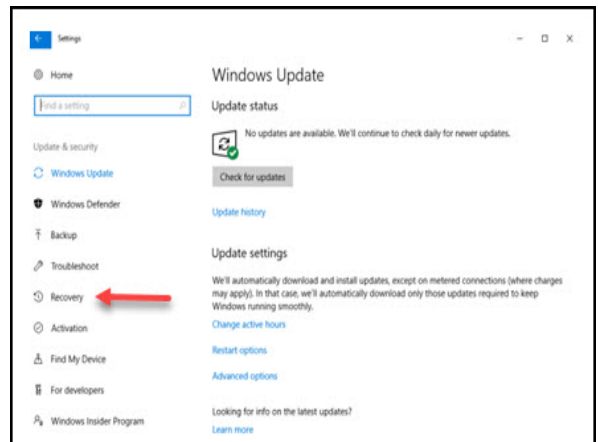
2. Click **Settings**.



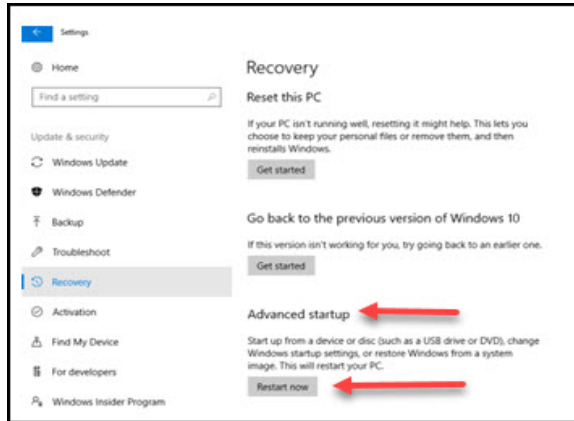
3. From the Windows Settings window, select **Update and Security**.



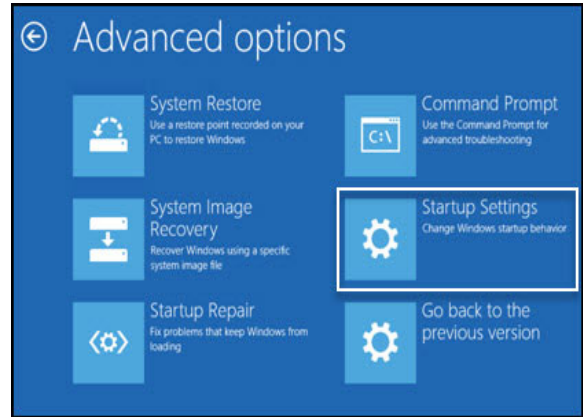
4. From the Windows Update window, select **Recovery**.



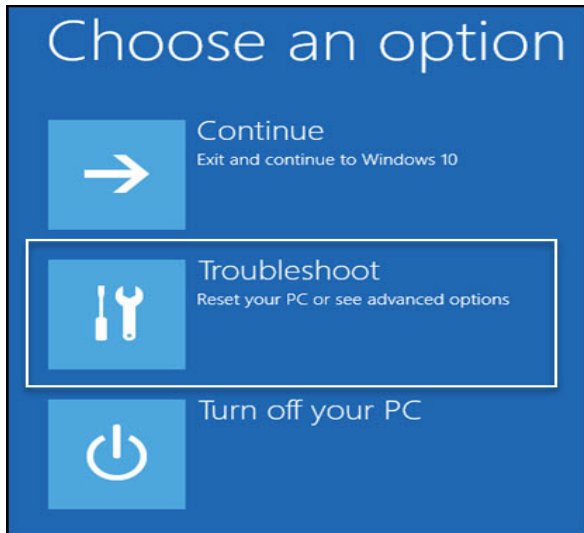
5. From the Recovery window, in the Advanced startup section, click **Restart now**.



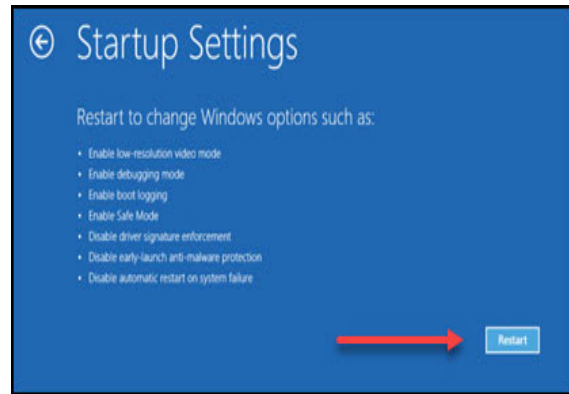
8. From Advanced Options window, Select **Startup Settings**.



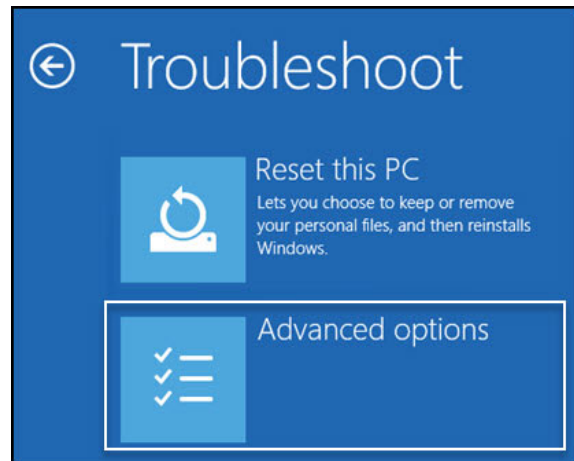
6. From the Choose an option window, select **Troubleshoot**.



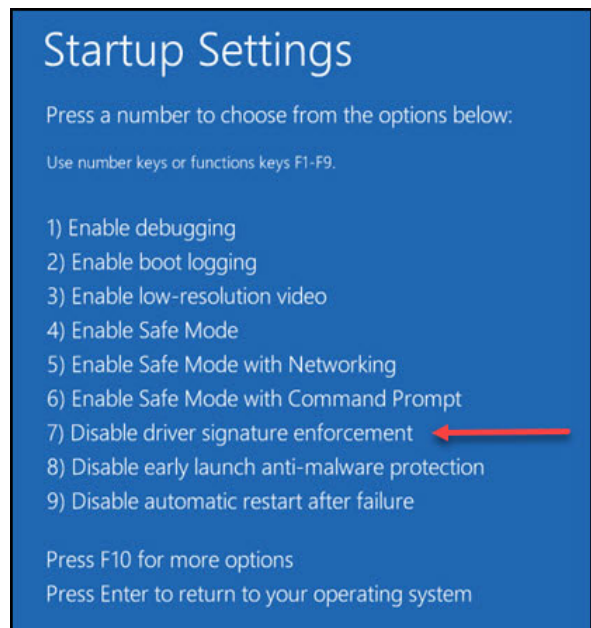
9. From the Startup Settings window, click **Restart**.



7. From the Troubleshoot window, Select **Advanced options**.



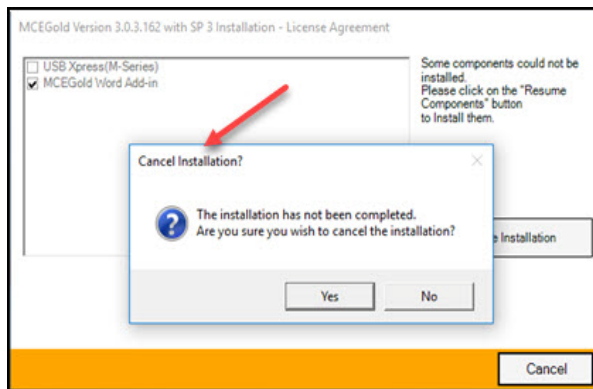
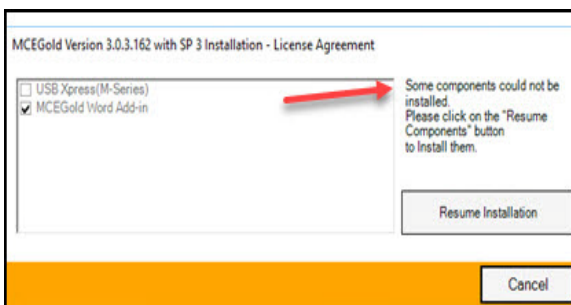
10. From the next Startup Settings window, press 7 to select **Disable driver signature enforcement**.



11. The computer displays the start up screen. Go to the *MCEGold 3.1.2 SP2 Installation* section.

## MCEGold 3.1.2 SP2 Installation

**NOTE:** During the installation process, if you see either of the following windows or messages: MCEGold – **Some components could not be installed**, or MCEGold – **Cancel Installation?**, then Windows 10 has not been configured to allow unsigned driver installation. See the section *Prepare Windows 10 for MCEGold 3.1.2 SP2 Installation*.

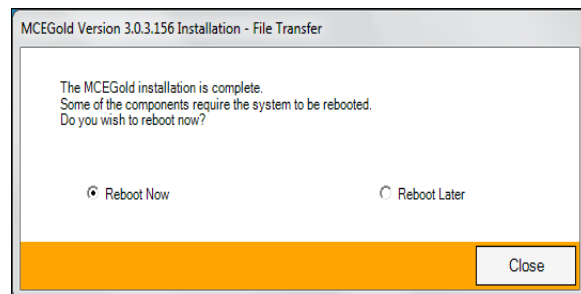


1. Insert the MCEGold 3.1.2 SP2 USB flash drive into the USB port. If the installation does not begin automatically, run setup.exe from the USB flash drive. (Select Run, setup.exe from the AutoPlay window).
2. Right click on setup.exe and select Run as administrator.
3. The License Agreement window opens. Read the PdMA license and select the “I Accept” option button. The **Next** button becomes visible. Click **Next**.

Note: If you do not accept the terms, the **Next** button is not visible, you can only click **Cancel**, which closes the software without installing it.



4. In the License Key window enter your Company Name and License Key exactly as provided by PdMA. You may copy and paste the license key using the paste button.
5. When the license has been verified a green check appears. The **Next** button appears. Click **Next**.
6. In the Installation Path window, accept the default shown in the text box (recommended) for the location to install the MCEGold program folder or use the browse (...) button to select an alternate location, make a note of it for your future use, and click **Next**. Note: It is not suggested to use an alternate location because that can cause conflict and Windows rights problems.
7. When prompted, click **Install Components**. Some components may require additional prompts.
8. When the installation of components is complete the **Next** button appears. Click **Next**.
9. A progress bar shows the progress of copying files to your computer.
10. When the installation is complete you must reboot your system. Select the Reboot Now option and click **Close**.





11. After rebooting, locate and copy the backup Emaxprb.xml file and the Template folder back into their appropriate locations in

C:\PdMA Corporation\MCEGold\Emax  
 C:\PdMA Corporation\MCEGold\Report

12. Answer Yes to “Merge the folder?” inquiry.
13. Remove the MCEGold 3.1.2 SP2 USB flash drive from the computer.

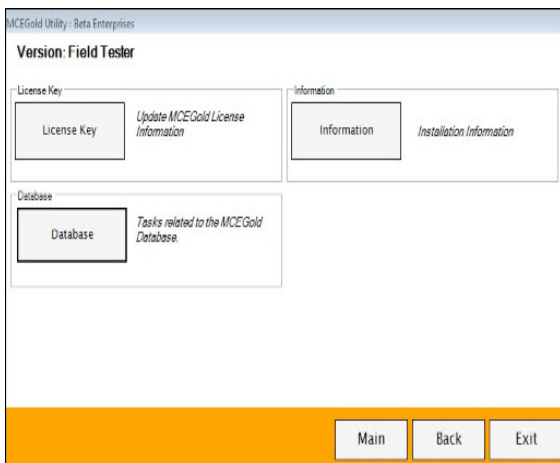
## FIELD TESTER DATABASE SETUP

NOTE: For the following, please use the information provided by your IT department.

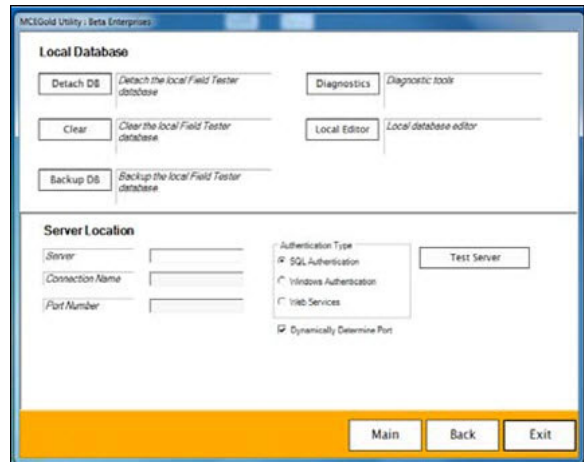
Field testers utilize a local database for storage of assets. These assets can then be synchronized with the Network database. In order to perform field testing in local tester mode, assets must be down-synced to the local database. In order to perform testing using MCEGold Lite, assets must be in a WatchList and down-synced to the local database.

To connect to the existing network database, please follow the instructions below.

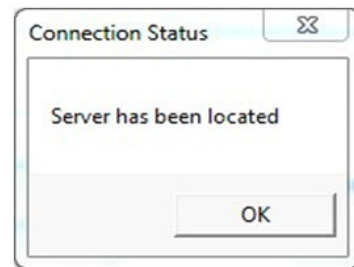
1. Open the MCEGold Utility program.
2. Click **Database**.



3. Enter the server information provided by your IT department.

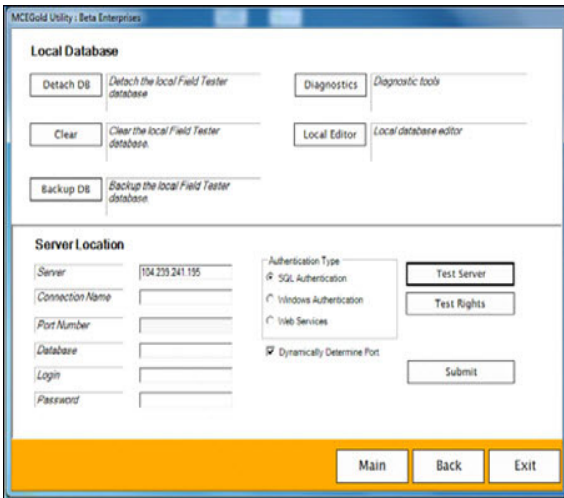


4. Once the server information has been entered, click **Test Server**. You should receive a message indicating “Server has been located”.

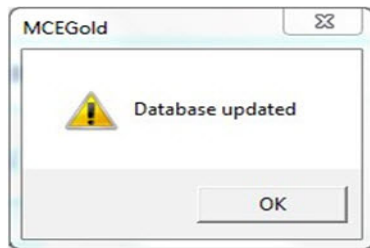


5. Click **OK** on the Connection Status window.

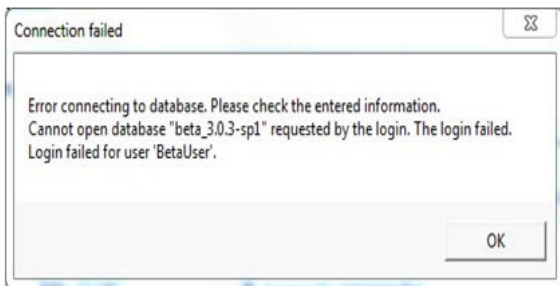
- Enter the following connection information provided by either your Administrator or IT Department: Connection Name, Database Information, Login Information, and Password.



- Click **Submit**. You will receive a message indicating “Database updated”. Click OK.



- If you receive an error as shown below, verify the information you entered is correct. If it is correct, click OK and contact your Administrator.



- If you do not receive an error message, click **Exit** on the Utility window.
- Start MCEGold and enter the name and password for the tester. Select the Field Tester Network mode.

- It is necessary to clear the local database a second time. Instructions are found on page 2 of this document titled Clear Local Database. Disregard the instructions in the “Note”.

- Once you have opened MCEGold, cleared the local database, and have verified MCEGold is correctly communicating with the database. You are now

## Upgrading From MCEGold 3.1.2 or Later

### Backup

In the possibility that you may need these files after the install, it is a good idea before beginning the MCEGold install to copy the Emaxprb.xml file only (not the folder) and the complete Templates folder to a safe location and make note of the location.

The default location for the files is listed below, however you may have chosen a different location during the original installation.

C:\PdMA Corporation\MCEGold\Emax  
C:\PdMA Corporation\MCEGold\Report

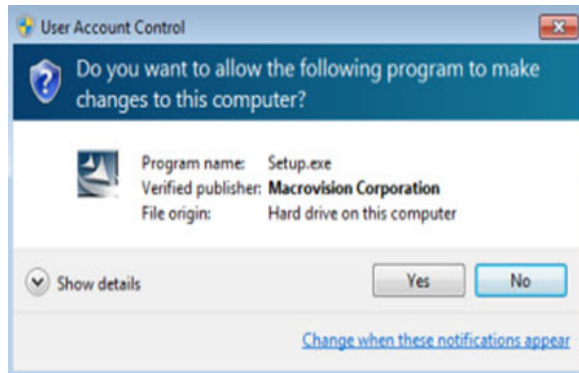
### MCEGold 3.1.2 SP2 Installation

NOTE: Some on screen prompts and messages during the installation process are controlled by the Windows operating system and are out of PdMA’s control. Every effort has been made to include their possible appearance and the action you should take. However, if you are unsure please contact our technical support department for help.

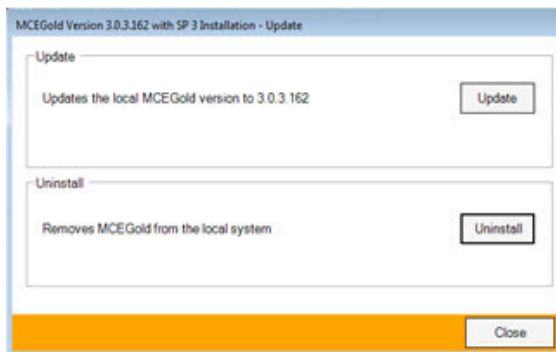
- Insert the MCEGold 3.1.2 SP2 USB flash drive into the USB port. If the installation does not begin automatically, run setup.exe from the USB flash drive. (Select Run, setup.exe from the AutoPlay window).



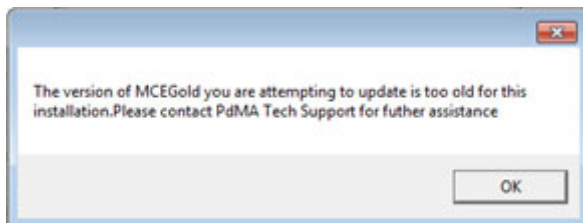
2. If you see the User Account Control screen, click **Yes**.



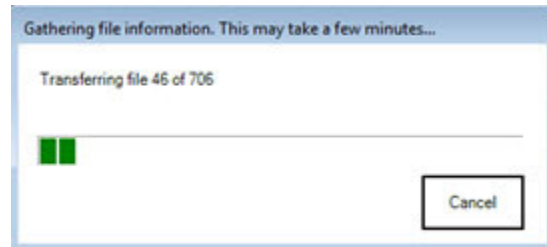
3. If there is an existing MCEGold version installed on your computer, you will see the MCEGold Update screen. click **Update**.



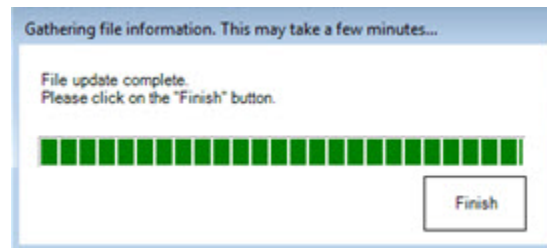
NOTE: If you have a version prior to MCEGold 3.1.2 you will receive the error message shown below. Do **NOT** proceed. Contact technical support.



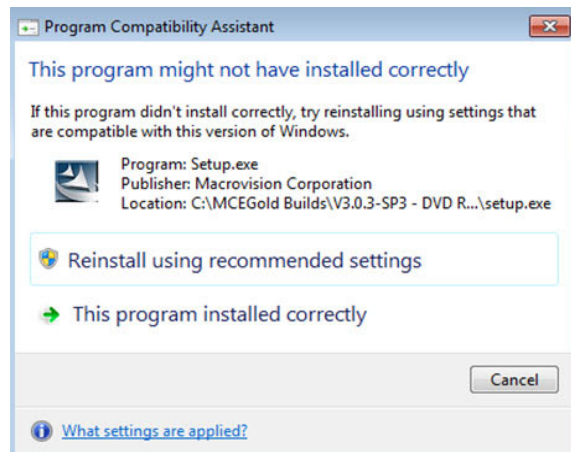
4. The status update window displays.



5. When the update is complete, click **Finish**.



6. If the Program Compatibility Assistant screen displays, select *This program installed correctly*.

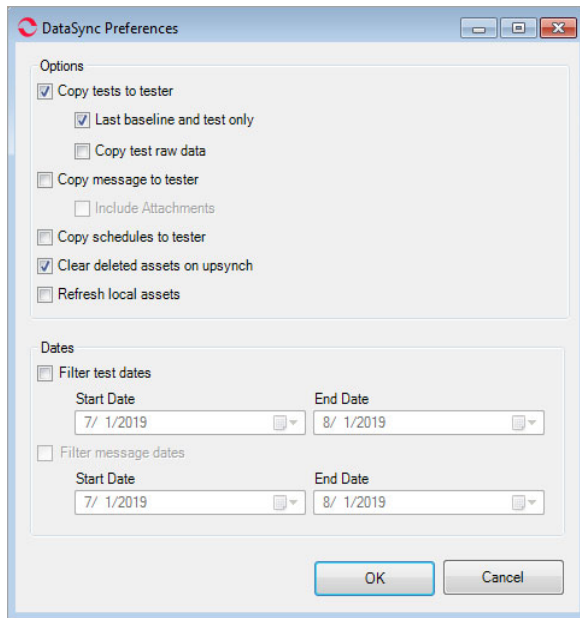


7. Go to the *Field Tester Database Setup* section on page 7.

## DATA SYNC PREFERENCES WINDOW

MCEGold 3.1.2 SP2 includes changes to the DataSync Preferences window shown below. “Copy test raw data” has been added to the “Copy test to tester” section.

A function is activated/inactivated by clicking in the box preceding the function, which causes a check mark to appear (active)/disappear (inactive).



## Options

**Copy tests to tester:** If this option is selected, all history chart data back to the last baseline or dates selected in the Filter test dates section and all raw data from the last baseline and last test only will be synchronized to the tester.

**Last baseline and test only:** Raw data from the last baseline and last test only will be synchronized to the field tester.

**Copy test raw data:** All raw data back to the last baseline or dates selected in the Filter Test Dates section will be synchronized to the tester. This is potentially a very large amount of data and could result in exceeding the monthly usage limit for cloud services.

**Copy message to tester:** All messages recorded in the message center back to the baseline test or dates selected in the Filter Test Dates section will be synchronized to the tester. No attachments will be transferred.

**Include Attachments:** All attachments embedded in the Message Center back to the baseline test or dates selected in the Filter Test Dates section will be synchronized to the tester. This is potentially a

very large amount of data and could result in exceeding the monthly usage limit for cloud services.

**Copy schedules to tester:** All schedules from the Scheduler will be synchronized to the tester.

**Clear deleted assets on upsynch:** Local assets that are identified as deleted from the server during the sync process will be deleted from the local database and sync window.

**Refresh local assets:** Nameplate data for each asset on the Field Tester will be replaced with the information from the server.

## Dates

**Filter test dates:** For the motors selected in the Sync Window, tests acquired on the Start Date and End Date as well as all dates in between the Start Date and End Date will be selected for synchronization preferences.

**Filter message dates:** For the motors selected in the DataSync Window, messages acquired on the Start Date and End Date as well as all dates in between the Start Date and End Date will be selected for synchronization preferences.