

# TECHNOTE 2301-N10

## ISSUED

January 2023

## SUBJECT

Release of MCEGold® 3.1.2 SP6 Network Version for Windows 10.

## DESCRIPTION

MCEGold 3.1.2 SP6 Network Version is an upgrade from MCEGold 3.1.2 SP5. This upgrade includes updated Comm Check application reports to support updated tester diagnostics, addition of popup warning message when attempting to attach a database file from an older SQL server version, modified the Add Asset window, and various bug fixes.

## PDMA CLOUD SERVICES

The network edition of MCEGold 3.1.2 SP6 supports access to PdMA Cloud Services. Please contact PdMA Technical Support (813-6216-6463 ext. 251) to discuss this option.

## NOTES

- MCEGold 3.1.2 SP6 is *only* compatible with Windows 10 and M-Series testers.

- **Windows 7 users - DO NOT TRY TO UPDATE** to MCEGold 3.1.2 SP6. Windows 7 compatibility ended with MCEGold 3.1.2 SP2. If you do try to update, MCEGold will become inoperable.

- Upgrading from a version prior to MCEGold 3.1.2 requires a new license key. Contact PdMA (813-621-6463 ext. 251) for a new license key.

- **MCEGold Word Add-in is NOT compatible with MS Word 2010.** Templates created with any version older than MS Word 2007 may not be functional and may cause conflicts with the MCEGold software.

- **MCEGold 3.1.2 SP6 requires that Word Add-in be uninstalled prior to MCEGold 3.1.2 SP6 installation or upgrade.**

- MCEGold 3.1.2 SP6 requires that all SQL versions older than 2017 be uninstalled prior to MCEGold 3.1.2 SP6 installation or upgrade.

- To ensure application accessibility, the default installation location has been set to C:\PdMA Corporation.

- Databases attached to MCEGold 3.1.2 SP6 must be from MCEGold 3.0.3 SP2 or later and once updated with 3.1.2 SP6 *will not* be compatible with older versions of MCEGold.

- Please make sure you allow sufficient time to update your database. Depending on the size of your database, updates may take an hour or longer.

- Assets exported with MCEGold 3.1.2 SP6 *will not* be compatible with older versions of MCEGold.

- If during installation you receive a message telling you “SQL Server System CLR Types requires the .Net Framework”, contact tech support for assistance.

- If you have any questions, please contact PdMA Technical Support (813-621-6463 ext. 251).

## Minimum Requirements

Computer	Dell Latitude 5420 Laptop*
Processor	11th Generation Intel Core i5-1135G7 (4 Core, 8M cache, base 2.4 GHz, up to 4.2 GHz)
Resolution	14” FHD (1920 x 1080)
Operating System	Microsoft® Windows 10 (64 bit)
Memory	8.0+ G RAM
Ports/Drives	(1) USB Port in Rear or Side
Hard Disk	256 GB SSD (30G Available)

\* Original Windows 10 model shipped with PdMA testers. It is not compatible with Windows 7. Using any other computer manufacturer in conjunction with the PdMA software may result in erratic computer behavior; not limited to but including:

- Power Management Issues
- Lock-up
- Communication Port Malfunction
- Driver Incompatibility
- Display Errors

- SQL Database Incompatibility
- Network Synchronization Issues.

## PREPARE FOR MCEGOLD 3.1.2 SP6 INSTALLATION

NOTE: If you have MCEGold 3.1.2 or later follow the instructions in *Upgrading From MCEGold 3.1.2 or Later* on page 6.

If you have any version prior to MCEGold 3.1.2 a full uninstall is required before installing version 3.1.2 SP6. See *Upgrading From a Version Prior to MCEGold 3.1.2*.

### Upgrading From a Version Prior to MCEGold 3.1.2

Upgrading from a version prior to MCEGold 3.1.2 requires a new license key. Contact PdMA (813-621-6463 ext. 251) for a new license key.

#### Backup

Before beginning the MCEGold uninstall, copy the Emaxprb.xml file only (not the folder) and the User Defined Templates to a safe location and make note of the location.

The default location for the files is listed below, however you may have chosen a different location during the original installation.

#### Emaxprb.xml

C:\PdMA Corporation\MCEGold\Emax

#### User Defined Detailed Report Templates (copy only .xml files)

C:\PdMA Corporation\MCEGold\Report\Templates\UserDefinedTemplates\Batch

#### User Defined Word Templates (copy only Word files such as .doc, .docx, .dot, etc.)

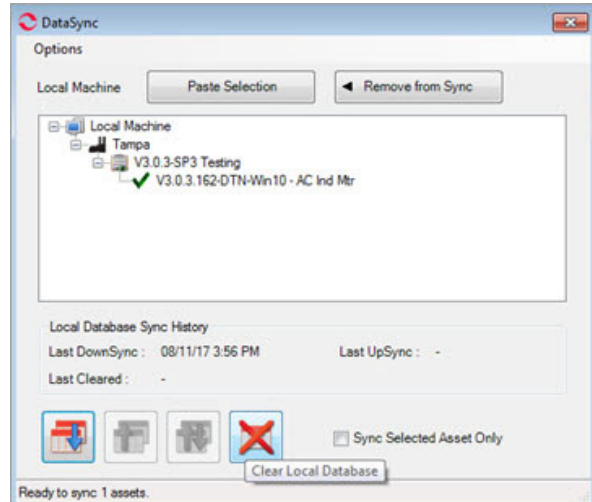
C:\PdMA Corporation\MCEGold\Report\Templates\WordTemplates\UserDefined

#### Clear Local Database

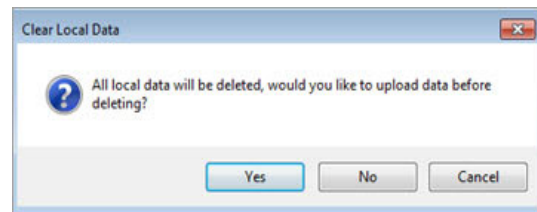
NOTE: Before proceeding ensure all local database synchronization has been performed. Failure to synchronize before clearing the local database will

result in loss of data. This procedure must be completed before the server database is updated.

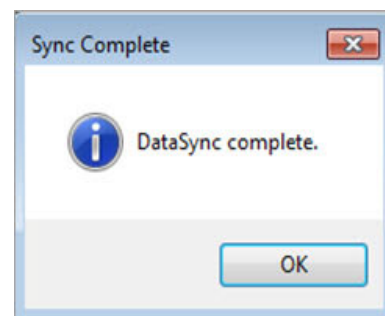
1. From the DataSync window, click **Clear Local Database**.



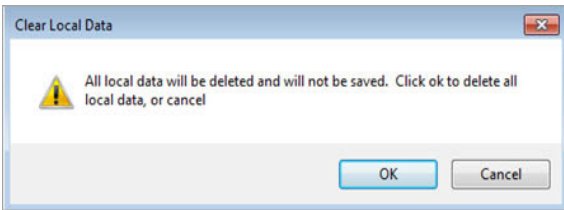
2. From the Clear Local Data window, click **Yes** to upload (UpSync) data, click **No** if you have already synchronized the data.



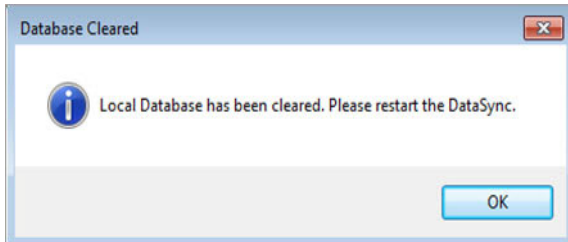
3. From the Sync Complete window, click **OK**.



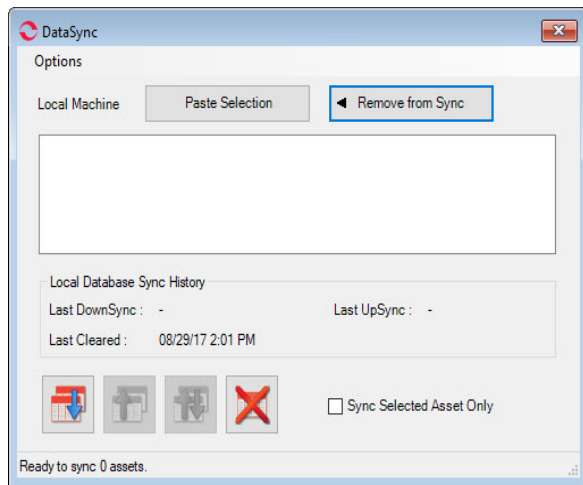
- From the next Clear Local Data window, click **OK** to delete all local data.



- From the Database Cleared window, click **OK**.



- Reopen the DataSync window to ensure the database has been cleared, as shown in the figure below. If it did not clear contact Technical Support.



## Update Server Database for Network Users

NOTE: Ensure the user account being used to update the server has “sysadmin” permissions.

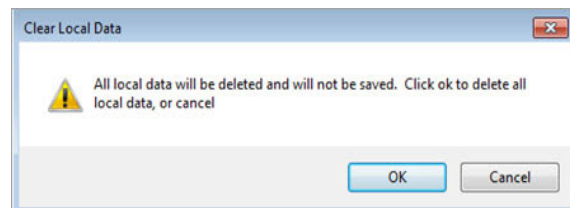
Please make sure you allow sufficient time to update your database. Depending on the size of your database, updates may take an hour or longer.

There is a separate application on the Installation USB flash drive to update the network database on the server.

**The database must be updated on the server first, then the desktops and field testers.**

If the update is installed on a network field tester before the server database is updated, a warning message appears informing you the database is an old version and to contact your system administrator.

- Backup the MCEGold server database.
- Insert the MCEGold 3.1.2 SP6 USB flash drive into the USB port. If the drive starts automatically, click **Exit** and proceed to the next step.
- Locate the MCEGold Database Server Update folder on the MCEGold 3.1.2 SP6 USB flash drive.
- Click on the MCEGold Database Server Update.exe file.
- The Server Information window opens. Fill in the Server, Database, Login, and Password information. The Login and Password will depend on your authentication (Windows/SQL).
- Click **Run Update**. The progress status will display on the window.
- When the update complete message displays, close the window.
- From the next Clear Local Data window, click **OK** to delete all local data.



## Uninstall Older Versions of SQL Server

If any version of Microsoft SQL Server prior to Microsoft SQL Server 2017 (such as 2005, 2008, 2012, 2014, 2016, etc.) exists on your computer, proceed with the *Uninstall Older Versions of SQL Server* section followed by the *Uninstall MCEGold* section below.

If only Microsoft SQL Server 2017 exists on your computer do not uninstall it and proceed to the section *Uninstall MCEGold*.

There are several components that begin with Microsoft SQL Server 20XX, starting with Microsoft SQL 2008, they should all be removed EXCEPT Microsoft SQL Server 2017.

1. Select Start, Settings, Apps.
2. Scroll down to locate Microsoft SQL Server 2008 from the list.
3. Highlight it and click **Uninstall**.
4. Follow the on-screen prompts.
5. Click **Finish** when the “Uninstall Complete” message is received. Do not close the window.
6. After uninstalling Microsoft SQL 2008, repeat from step 2, uninstalling all components that begin with Microsoft SQL Server 20XX. Reminder, **DO NOT** uninstall Microsoft SQL Server 2017 (or later). Do not close the window.
7. Locate and uninstall all Microsoft System CLR Types for SQL Server prior to CLR type version 2017.
8. Repeat step 6 until all older CLR Types have been removed.
9. Do not close window.
10. Continue to *Uninstall Word Add-In*.

### **Uninstall Word Add-in**

Note: If you have MCEGold Word Add-in installed, you need to uninstall it before upgrading to MCEGold 3.1.2 SP6. If it is not installed, proceed to *Uninstall MCEGold*.

1. Select Start, Settings, Apps.
2. Scroll down to locate MCEGold Word Add-in.
3. Highlight it and click **Uninstall**.
4. Follow the on-screen prompts.
5. Click **Finish** when the “Uninstall Complete” message is received.
6. Reboot the computer.

7. Continue to *Uninstall MCEGold*.

### **Uninstall MCEGold**

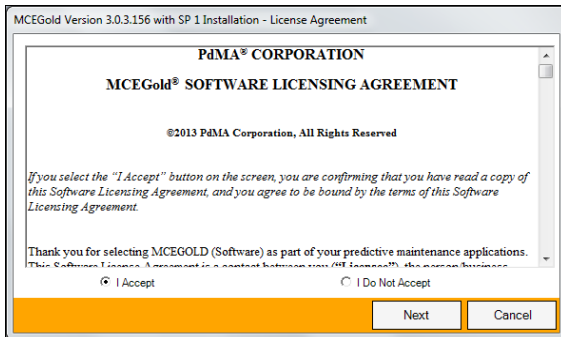
Note: If you have MCEGold icons pinned to your Taskbar, it is necessary to unpin them before beginning the uninstall. Right click on the icon and select “Unpin from taskbar”.

1. Select Start. Settings, Apps.
2. Scroll down to locate MCEGold Version X.X.X.
3. Click **Uninstall** and follow the on-screen prompts.
4. Click **Finish** when the “Uninstall Complete” message is received.
5. If present locate the PdMA MCEMAX Tester (Driver Removal) file. Highlight it and click **Uninstall** and follow the on-screen prompts. If it is not present proceed to Step 7.
6. Click **Finish** when the “Uninstall Complete” message is received.
7. Locate the C:\PdMACorporation folder and delete it. The subfolders will be deleted also. After the installation of MCEGold 3.1.2 SP6 the new folder location will be C:\PdMA Corporation\...
8. Reboot the computer.
9. Continue to *MCEGold 3.1.2 SP6 Installation*.

## **MCEGold 3.1.2 SP6 Installation**

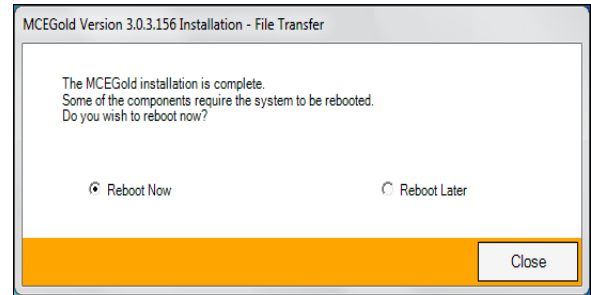
1. If installing on a tester, disconnect the USB cable from the tester computer.
2. Insert the MCEGold 3.1.2 SP6 USB flash drive into the USB port. Select Run, setup.exe from the AutoPlay window. If the installation does not begin automatically, run setup.exe from the **USB flash drive**.
3. Right click on setup.exe and select Run as administrator.
4. The License Agreement window opens. Read the PdMA license and select the “I Accept” option button. The **Next** button becomes visible. Click **Next**.

Note: If you do not accept the terms, the **Next** button is not visible, you can only click **Cancel**, which closes the software without installing it.



5. In the License Key window enter your Company Name and License Key exactly as provided by PdMA. You may copy and paste the license key using the paste button.
6. When the license has been verified a green check appears. The **Next** button appears. Click **Next**.
7. In the Installation Path window, accept the default shown in the text box (recommended) for the location to install the MCEGold program folder or use the browse (...) button to select an alternate location, make a note of it for your future use, and click **Next**. Note: It is not suggested to use an alternate location because that can cause conflict and Windows rights problems.
8. When prompted, click **Install Components**. Some components may require additional prompts.
9. When the installation of components is complete the **Next** button appears. Click **Next**.
10. A progress bar shows the progress of copying files to your computer.

11. When the installation is complete you must reboot your system. Select the Reboot Now option and click **Close**.



12. After rebooting, locate and copy the backup Emaxprb.xml file and the User Defined Report Templates back into their appropriate locations.

The default location for the files is listed below, however you may have chosen a different location during the original installation.

#### **Emaxprb.xml**

C:\PdMA Corporation\MCEGold\Emax

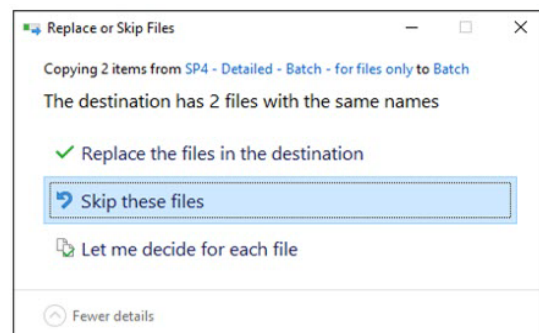
#### **User Defined Detailed Report Templates (copy only .xml files)**

C:\PdMA Corporation\MCEGold\Report\Templates\UserDefinedTemplates\Batch

#### **User Defined Word Templates (copy only Word files such as .doc, .docx, .dot, etc.)**

C:\PdMA Corporation\MCEGold\Report\Templates\WordTemplates\UserDefined

If you see a message like the one shown below, select "Skip these files". Note that the number of items may be different that shown in this example.



13. Remove the MCEGold 3.1.2 SP6 USB flash drive from the computer.
14. If installing on a tester, re-connect the USB cable to the tester computer.

## Upgrading From MCEGold 3.1.2 or Later

### Backup

Before beginning the MCEGold installation, copy the Emaxprb.xml file only (not the folder) and the User Defined Report Templates to a safe location and make note of the location.

The default location for the files is listed below, however you may have chosen a different location during the original installation.

#### Emaxprb.xml

C:\PdMA Corporation\MCEGold\Emax

#### User Defined Detailed Report Templates (copy only .xml files)

C:\PdMA Corporation\MCEGold\Report\Templates\UserDefinedTemplates\Batch

#### User Defined Word Templates (copy only Word files such as .doc, .docx, .dot, etc.)

C:\PdMA Corporation\MCEGold\Report\Templates\WordTemplates\UserDefined

### Uninstall Older Versions of SQL Server

If any version of Microsoft SQL Server prior to Microsoft SQL Server 2017 (such as 2005, 2008, 2012, 2014, 2016, etc.) exists on your computer, proceed with the *Uninstall Older Versions of SQL Server* section followed by the *Uninstall MCEGold* section below.

If only Microsoft SQL Server 2017 exists on your computer do not uninstall it and proceed to the section *Uninstall Word Add-in*.

There are several components that begin with Microsoft SQL Server 20XX, they should all be removed starting with Microsoft SQL 2008, EXCEPT Microsoft SQL Server 2017.

1. Select Start, Settings, Apps.

2. Scroll down to locate Microsoft SQL Server 2008 from the list.
3. Highlight it and click **Uninstall**.
4. Follow the on-screen prompts.
5. Click **Finish** when the “Uninstall Complete” message is received. Do not close the window.
6. After uninstalling Microsoft SQL 2008, repeat from step 2, uninstalling all components that begin with Microsoft SQL Server 20XX. Reminder do not uninstall Microsoft SQL Server 2017 (or later)!
7. Do not close the window.
8. Locate and uninstall all Microsoft System CLR Types for SQL Server prior to CLR type version 2017.
9. Repeat from step 6 until all older CLR Types have been removed.
10. Click **Finish** when the “Uninstall Complete” message is received.
11. Close the Apps window when all components have been uninstalled.
12. Reboot the computer.

### Uninstall Word Add-in

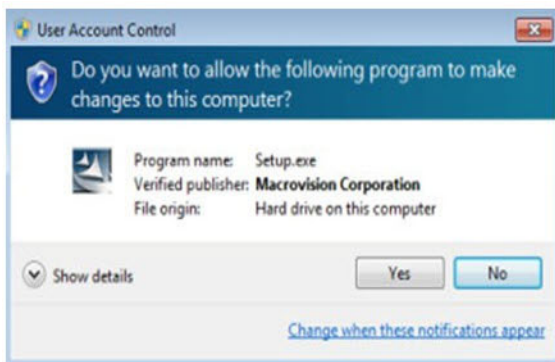
Note: If you have MCEGold Word Add-in installed, you need to uninstall it before upgrading to MCEGold 3.1.2 SP6. If it is not installed, proceed to *MCEGold 3.1.2 SP6 Installation*.

1. Select Start, Settings, Apps.
2. Scroll down and locate MCEGold Word Add-in.
3. Highlight it and click **Uninstall**.
4. Follow the on-screen prompts.
5. Click **Finish** when the “Uninstall Complete” message is received.
6. Continue to *MCEGold 3.1.2 SP6 Installation*.

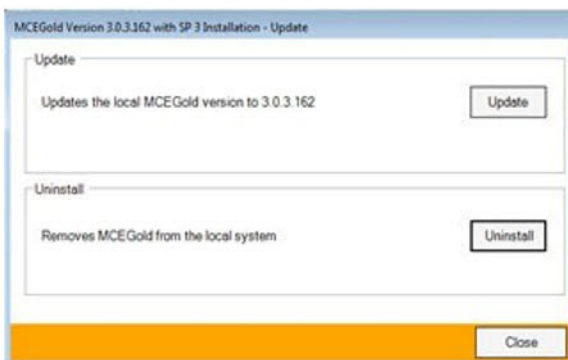
## MCEGold 3.1.2 SP6 Installation

NOTE: Some on-screen prompts and messages during the installation process are controlled by the Windows operating system and are out of PdMA's control. Every effort has been made to include their possible appearance and the action you should take. However, if you are unsure, please contact our technical support department for help. (813-621-6463 ext. 251)

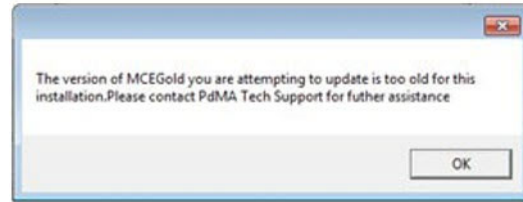
1. If installing on a tester, disconnect the USB cable from the tester computer.
2. Insert the MCEGold 3.1.2 SP6 USB flash drive into the USB port. Select Run, setup.exe from the AutoPlay window. If the installation does not begin automatically, run setup.exe from the USB flash drive.
3. If you see the User Account Control screen, click **Yes**.



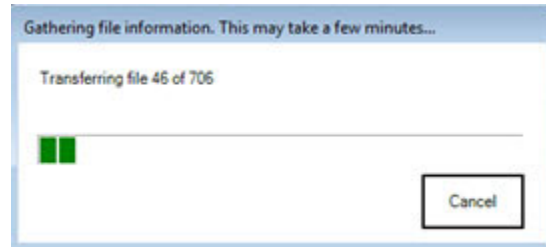
4. If there is an existing MCEGold version installed on your computer, you will see the MCEGold Update screen. Click **Update**.



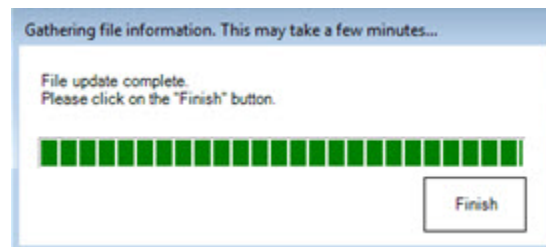
Note: If you have a version prior to MCEGold 3.1.2 you will receive the error message shown. Do **NOT** proceed. Contact technical support at 813-621-6463 ext. 251.



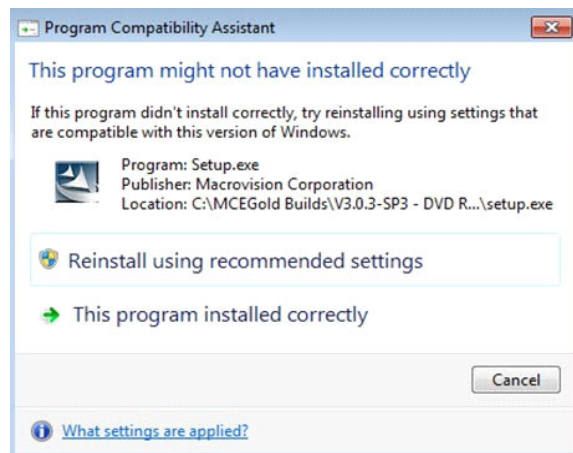
5. The status update window displays.



6. When the update is complete, click **Finish**.



7. If the Program Compatibility Assistant screen displays, select *This program installed correctly*.



8. Locate and copy the backup Emaxprb.xml file and the User Defined Report Templates back into their appropriate locations.

The default location for the files is listed below, however you may have chosen a different location during the original installation.

#### Emaxprb.xml

C:\PdMA Corporation\MCEGold\Emax

#### User Defined Detailed Report Templates (copy only .xml files)

C:\PdMA

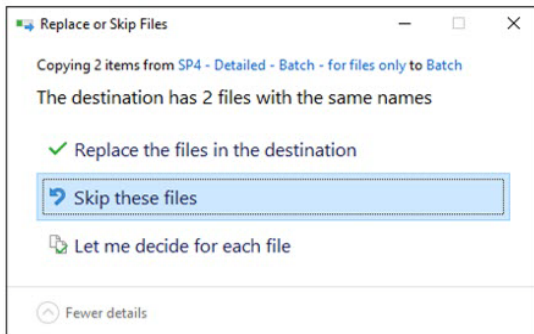
Corporation\MCEGold\Report\Templates\UserDefinedTemplates\Batch

#### User Defined Word Templates (copy only Word files such as .doc, .docx, .dot, etc.)

C:\PdMA

Corporation\MCEGold\Report\Templates\WordTemplates\UserDefined

If you see a message like the one shown below, select “Skip these files”. Note that the number of items may be different that shown in this example.



9. If installing on a tester, re-connect the USB cable to the tester computer.
10. Continue to the *Field Tester Database Setup* section.

## FIELD TESTER DATABASE SETUP

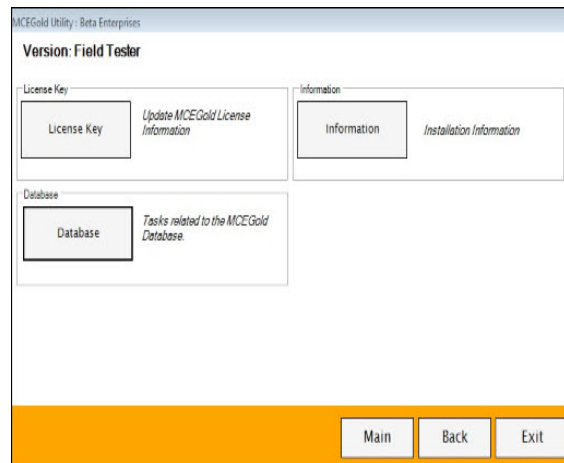
NOTE: For the following, please use the information provided by your IT department.

Field testers utilize a local database for storage of assets. These assets can then be synchronized with the Network database. In order to perform field testing in local tester mode, assets must be down-synced to the local database. In order to perform testing using MCEGold Lite, assets

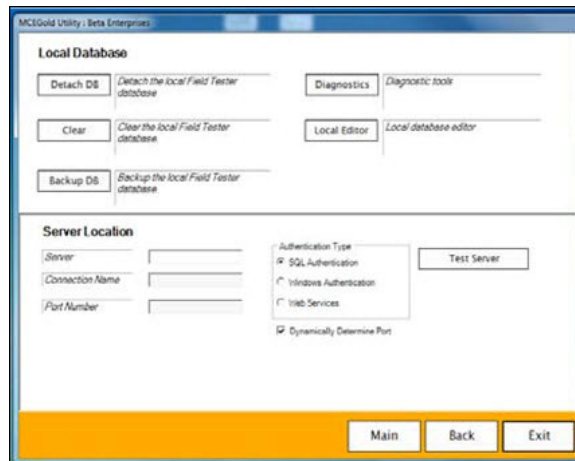
must be in a WatchList and down-synced to the local database.

To connect to the existing network database, please follow the instructions below.

1. Open the MCEGold Utility program.
2. Click **Database**.

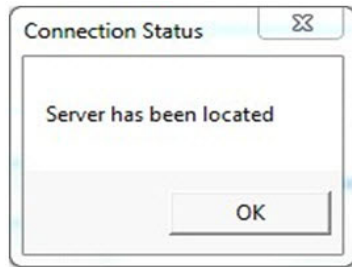


3. Enter the server information provided by your IT department.

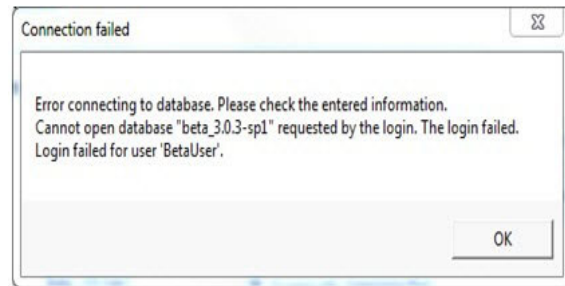




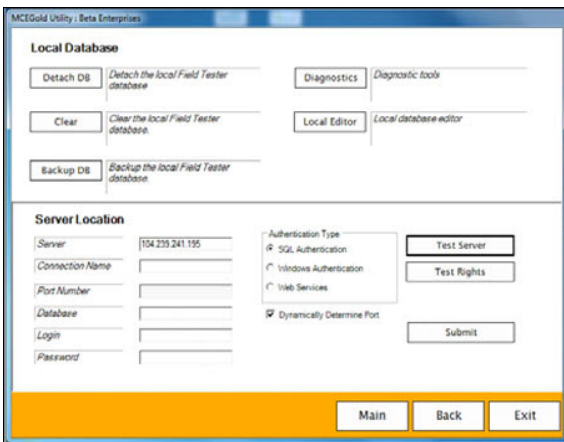
- Once the server information has been entered, click **Test Server**. You should receive a message indicating “Server has been located”.



- If you receive an error as shown below, verify the information you entered is correct. If it is correct, click OK and contact your Administrator.



- Click **OK** on the Connection Status window.
- Enter the following connection information provided by either your Administrator or IT Department: Connection Name, Database Information, Login Information, and Password.



- If you do not receive an error message, click **Exit** on the Utility window.
- Start MCEGold and enter the name and password for the tester. Select the Field Tester Network mode.
- It is necessary to clear the local database a second time. Instructions are found on page 2 of this document titled Clear Local Database. Disregard the instructions in the “Note”.
- Once you have opened MCEGold, cleared the local database, and have verified MCEGold is correctly communicating with the database you are now ready to use MCEGold.

- Click **Submit**. You will receive a message indicating “Database updated”. Click OK.

