

TECHNOTE 1902-S7

ISSUED

August 2019

SUBJECT

Release of MCEGold® 3.1.2 SP2 Stand Alone for Windows 7.

DESCRIPTION

MCEGold 3.1.2 SP2 is an upgrade from MCEGold 3.1.2 SP1.

NOTES

- MCEGold 3.1.2 SP2 is only compatible with Windows 10 and Windows 7 and M-Series testers.

- Installation of MCEGold 3.1.2 SP2 on a Windows 10 computer uses a special installation procedure. For a Windows 10 installation refer to TechNote 1902-S10 (Stand Alone) or TechNote 1902-N10 (Network) as applicable.

- MCEGold Word Add-in is only compatible with MS Word 2007 and 2013. MCEGold Word Add-in is NOT compatible with MS Word 2010. Templates created with other versions of MS Word may not be functional and may cause conflicts with the MCEGold software.

- To ensure application accessibility, the default installation location has been set to C:\PdMA Corporation.

- Databases attached to MCEGold 3.1.2 SP2 must be from MCEGold 3.0.3 SP2 or later and once updated with MCEGold 3.1.2 SP2 *will not* be compatible with older versions of MCEGold.

- Please make sure you allow sufficient time to update your database. Depending on the size of your database, updates may take an hour or longer.

- Assets opened with MCEGold 3.1.2 SP2 *will not* be compatible with older versions of MCEGold.

- If you have any questions, please contact PdMA Technical Support (813-621-6463 ext. 251).

Minimum Requirements

| | |
|------------------|---|
| Computer | Dell Latitude E5490 Laptop* |
| Processor | 2+ GHz Intel i5 or equivalent |
| Resolution | 1600 x 900/1920 x 1080 (small font) |
| Operating System | Microsoft® Windows 7 SP1 (32 or 64 bit)** |
| Memory | 4.0+ G RAM |
| Ports/Drives | (1) USB Port in Rear or Side |
| Hard Disk | 20G Available |

* Using any other computer manufacturer in conjunction with the PdMA software may result in erratic computer behavior; not limited to but including:

- Power Management Issues
- Lock-up
- Communication Port Malfunction
- Driver Incompatibility
- Display Errors
- SQL Database Incompatibility
- Network Synchronization Issues.

** For International Customers: Windows 7 Ultimate (32 or 64-bit).

PREPARE FOR MCEGOLD 3.1.2 SP2 INSTALLATION

NOTE: If you have MCEGold 3.1.2 or later follow the instructions in *Upgrading From MCEGold 3.1.2 or Later* on page 3.

If you have any version prior to MCEGold 3.1.2 a full uninstall is required before installing version 3.1.2 SP2. See *Upgrading From a Version Prior to MCEGold 3.1.2*.

Upgrading From a Version Prior to MCEGold 3.1.2

Backup

Before beginning the MCEGold install, copy the Emaxprb.xml file only (not the folder) and the complete Templates folder to a safe location and make note of the location.

The default location for the files is listed below, however you may have chosen a different location during the original installation.

C:\PdMA Corporation\MCEGold\Emax

C:\PdMA Corporation\MCEGold\Report

Uninstall

Note: If you have MCEGold icons pinned to your Taskbar, it is necessary to unpin them before beginning the uninstall. Right click on the icon and select “Unpin this program from the taskbar”.

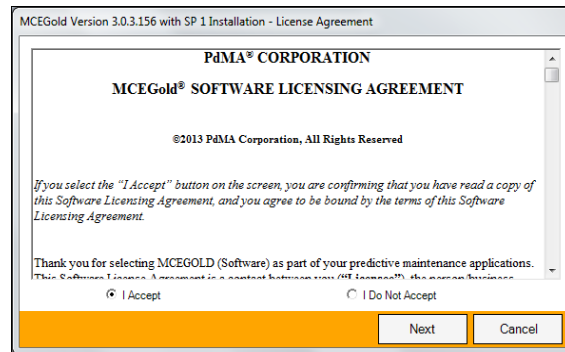
1. Select Start, Control Panel, select Programs, then Programs and Features.
2. In the Uninstall or change a program window scroll down to locate and highlight the MCEGold Version X.X.X on the list.
3. Click **Uninstall/Change** located above the list and follow on screen prompts.
4. Click **Finish** when the “Uninstall Complete” message is received.
5. Locate the PdMA MCEMAX Tester (Driver Removal) file. Highlight it and click **Uninstall/Change** located above the list and follow the on screen prompts.
6. Click **Finish** when the “Uninstall Complete” message is received.
7. Locate the C:\PdMACorporation folder and delete it. The subfolders will be deleted also. After the installation of MCEGold 3.1.2 SP2 the new folder location will be C:\PdMA Corporation\...
8. Reboot your computer.
9. Go to step one in the *MCEGold 3.1.2 SP2 Installation* section.

MCEGold 3.1.2 SP2 Installation

1. Insert the MCEGold 3.1.2 SP2 USB flash drive into the USB port. If the installation does not begin automatically, run setup.exe from the USB flash drive. (Select Run, setup.exe from the AutoPlay window).

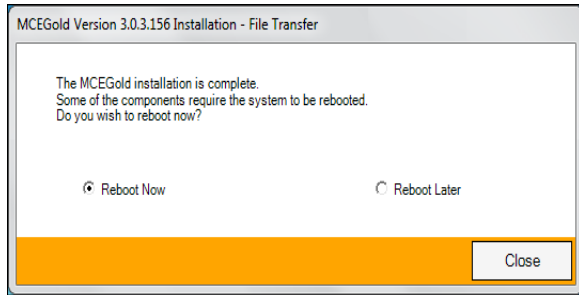
2. The License Agreement window opens. Read the PdMA license and select the “I Accept” option button. The **Next** button becomes visible. Click **Next**.

Note: If you do not accept the terms, the **Next** button is not visible, you can only click **Cancel**, which closes the software without installing it.



3. In the License Key window enter your Company Name and License Key exactly as provided by PdMA. You may copy and paste the license key using the paste button.
4. When the license has been verified a green check appears. The **Next** button appears. Click **Next**.
5. In the Installation Path window, accept the default shown in the text box (recommended) for the location to install the MCEGold program folder or using the browse (...) button to select an alternate location, make a note of it for your future use, and click **Next**. Note: It is not suggested to use an alternate location because that can cause conflict and Windows rights problems.
6. When prompted, click **Install Components**. Some components may require additional prompts.
7. When the installation of components is complete the **Next** button appears. Click **Next**.
8. A progress bar shows the progress of copying files to your computer.

- When the installation is complete you must reboot your system. Select the Reboot Now option and click **Close**.



- After rebooting, locate and copy the backup Emaxprb.xml file and the Template folder back into their appropriate locations in

C:\PdMA Corporation\MCEGold\Emax
 C:\PdMA Corporation\MCEGold\Report

- Answer Yes to “Merge the folder?” inquiry.
- Remove the MCEGold 3.1.2 SP2 USB flash drive from the computer.
- Go to the *Database Setup* section.

Upgrading From MCEGold 3.1.2 or Later

Backup

In the possibility that you may need these files after the install, it is a good idea before beginning the MCEGold install to copy the Emaxprb.xml file only (not the folder) and the complete Templates folder to a safe location and make note of the location.

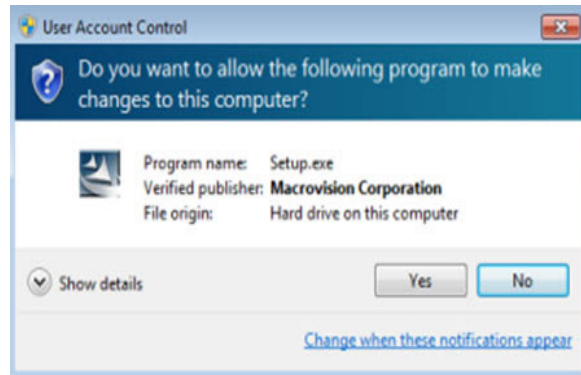
The default location for the files is listed below, however you may have chosen a different location during the original installation.

C:\PdMA Corporation\MCEGold\Emax
 C:\PdMA Corporation\MCEGold\Report

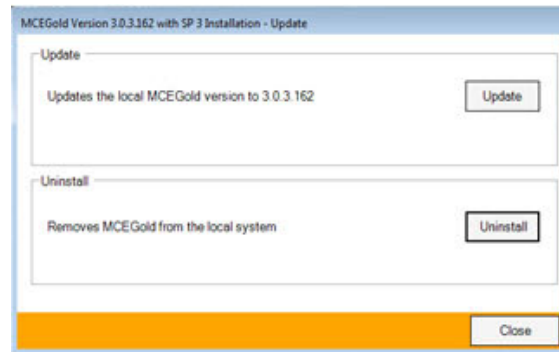
MCEGold 3.1.2 SP2 Installation

NOTE: Some on screen prompts and messages during the installation process are controlled by the Windows operating system and are out of PdMA’s control. Every effort has been made to include their possible appearance and the action you should take. However, if you are unsure please contact our technical support department for help.

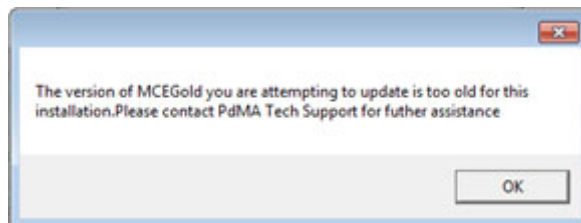
- Insert the MCEGold 3.1.2 SP2 USB flash drive into the USB port. If the installation does not begin automatically, run setup.exe from the USB flash drive. (Select Run, setup.exe from the AutoPlay window).
- If you see the User Account Control screen, click **Yes**.



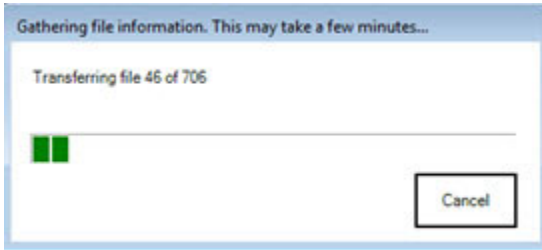
- If there is an existing MCEGold version installed on your computer, you will see the MCEGold Update screen. click **Update**.



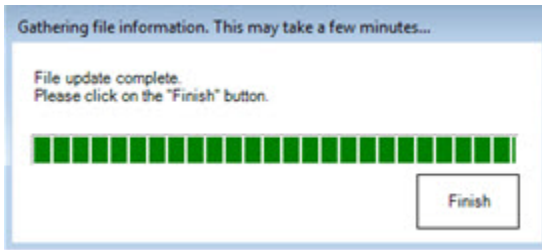
NOTE: If you have a version prior to MCEGold 3.1.2 you will receive the error message shown below. Do **NOT** proceed. Contact technical support.



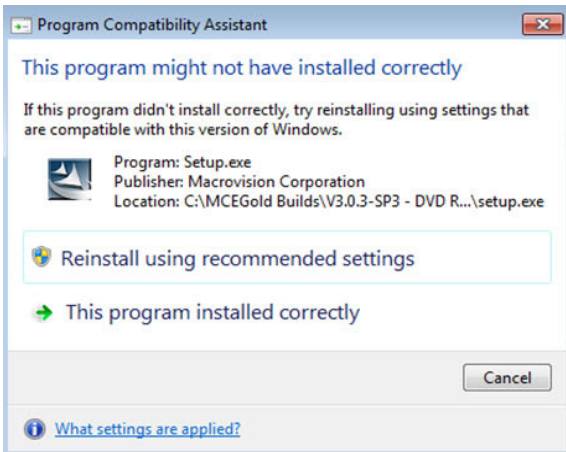
- The status update window displays.



- When the update is complete, click **Finish**.



- If the Program Compatibility Assistant screen displays, select *This program installed correctly*.



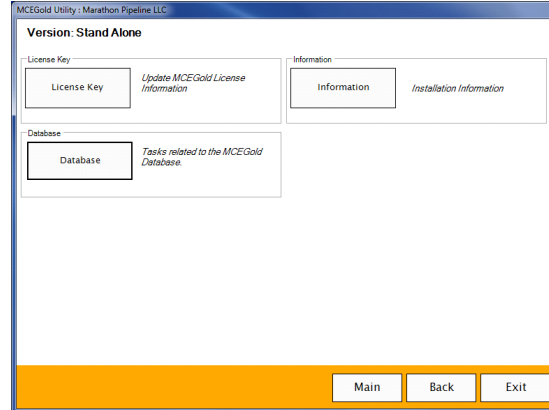
- Go to the *Database Setup* section.

DATABASE SETUP

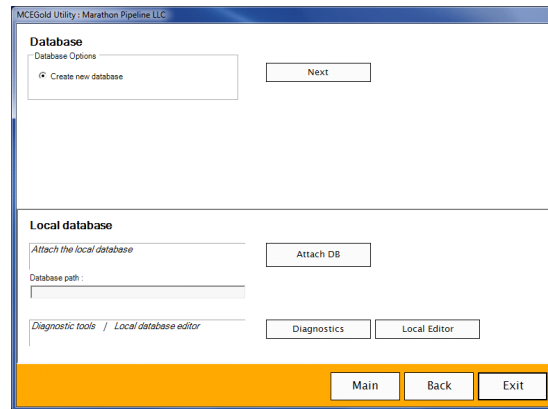
NOTE: This procedure is for connecting to an existing database that is to be upgraded to MCEGold 3.1.2 SP2. To connect to an existing database, please follow the instructions below.

- Ensure you have properly backed up the database you are converting.

- Open the Utility program and click the **Database** button.

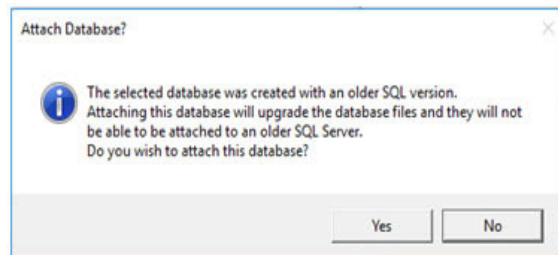


- Click **Attach DB** as shown in the below.

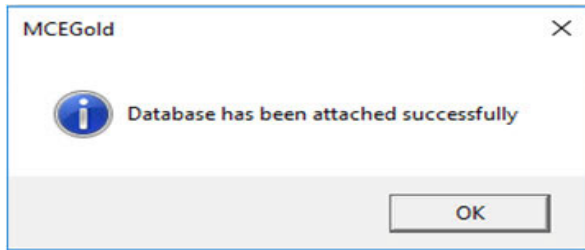


- Navigate to the database location on your computer and select the desired database.

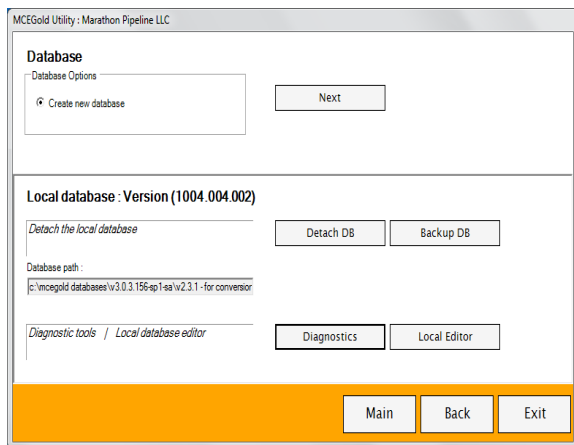
If you receive the following message: “The database you selected was created with an older SQL version”, the database needs to be upgraded to SQL 2008. **Stop!** Click **No**. Do **NOT** proceed! Contact Technical Support.



- If the database attached properly you will see the following window. Click **OK**.



- The MCEGold Utility Database Window opens. Click **Exit**.

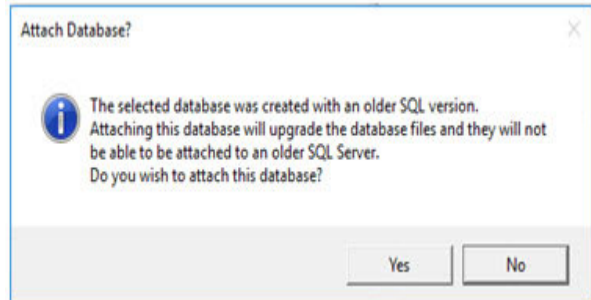


START MCEGOLD

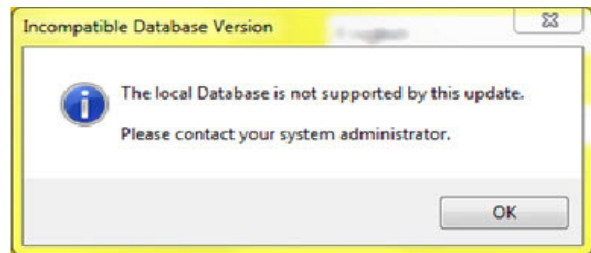
- Start MCEGold.
- If the database window is empty, select a database using the Search button (...) located on the right side of the Site textbox. This opens your computer navigator window which allows you to search for a database.
- When the database has been selected, click **Open**.
- Verify login parameters on the right side of the window are correct and click **OK**.

NOTE: If no databases are available, click **Cancel** to exit out of MCEGold, and contact PdMA Technical Support at 813-621-6463 ext. 251.

If you receive the following message: “The database you selected was created with an older SQL version”, the database needs to be upgraded to SQL 2008. **Stop!** Click **No**. Do **NOT** proceed! Contact Technical Support.



If you receive the following “local database is not supported by this update” message when trying to start MCEGold, the attached database is too old for conversion and needs to be updated to MCEGold 3.0.3 SP2 or later prior to updating to MCEGold 3.1.2 SP2. Contact your system administrator.



If you receive the following *Incompatible Database Version* message when trying to start MCEGold, you are attempting to run MCEGold with a database that is older than MCEGold 3.1.2 SP2. You will be prompted to update the database. If you have properly backed up your existing database, click **Yes** to run the update. If you have not backed up your existing database, click **No**, backup the database, and then perform the Database Setup procedure.

NOTE: Please make sure you allow sufficient time to update your database. Depending on the size of your database, updates may take an hour or longer.

