

# TECHNOTE 1705-S10

## ISSUED

October 2017

## SUBJECT

Release of MCEGold® 3.0.3 SP4 - Stand Alone for Windows 10.

## DESCRIPTION

MCEGold 3.0.3 SP4 is an upgrade from MCEGold 3.0.3. SP3.

## NOTES

- MCEGold 3.0.3 SP4 is only compatible with Windows 10 and Windows 7 and M-Series testers.

- Installation of MCEGold 3.0.3 SP4 on a Windows 10 computer uses a special installation procedure. For a Windows 7 installation refer to TechNote 1705-S7 (Stand Alone) or TechNote 1705-N7 (Network) as applicable.

- MCEGold Word Add-in is only compatible with MS Word 2007 and 2013. MCEGold Word Add-in is NOT compatible with MS Word 2010. Templates created with other versions of MS Word may not be functional and may cause conflicts with the MCEGold software.

- To ensure application accessibility, the default installation location has been set to C:\PdMA Corporation.

- Databases attached to MCEGold 3.0.3 SP4 must be from MCEGold 2.6.1 or later and once updated with 3.0.3 SP4 *will not* be compatible with older versions of MCEGold.

- Assets opened with MCEGold 3.0.3 SP4 *will not* be compatible with older versions of MCEGold.

- If you have any questions, please contact PdMA Technical Support (813-621-6463 ext. 251).

## Minimum Requirements

|                  |  |
|------------------|--|
| Computer         | Dell Latitude E5470 Laptop*            |
| Processor        | 2+ GHz Intel i5 or equivalent          |
| Resolution       | 1600 x 900/1920 x 1080 (small font)    |
| Operating System | Microsoft® Windows 10 (32 or 64 bit)** |
| Memory           | 4.0+ G RAM***                          |
| Ports/Drives     | (1) USB Port in Rear or Side           |
| Hard Disk        | 20G Available                          |

\* Using any other computer manufacturer in conjunction with the PdMA software may result in erratic computer behavior; not limited to but including:

- Power Management Issues
- Lock-up
- Communication Port Malfunction
- Driver Incompatibility
- Display Errors
- SQL Database Incompatibility
- Network Synchronization Issues.

\*\* For International Customers: Windows 10 or (32 or 64-bit)

\*\*\*If you are upgrading from MCEGold 2.6.1 - 2.6.2 verify that your computer has at least 4G of RAM.

## PREPARE WINDOWS 10 FOR MCEGOLD 3.0.3 SP4 INSTALLATION

NOTE: If you have updated to Windows 10 from a previous version of Windows, you must perform a full uninstall of MCEGold regardless of the version. If you have not previously installed MCEGold on your Windows 10 computer, it is not necessary to uninstall MCEGold. Go to the Disable Driver Signature Enforcement section.

## Backup

Before beginning the MCEGold uninstall, copy the Emaxprb.xml file only (not the folder) and the complete Templates folder to a safe location and make note of the location.

The default location for the files is listed below, however you may have chosen a different location during the original installation.

C:\PdMA Corporation\MCEGold\Emax  
C:\PdMA Corporation\MCEGold\Report

## Uninstall

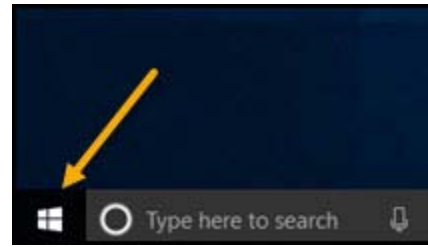
1. Select Start, Control Panel, select Programs, then Programs and Features.
2. In the Uninstall or change a program window scroll down to locate and highlight the MCEGold Version X.X.X on the list.
3. Click **Uninstall/Change** located above the list and follow on screen prompts.
4. Click **Finish** when the “Uninstall Complete” message is received.
5. Locate the PdMA MCEMAX Tester (Driver Removal) file. Highlight it and click **Uninstall/Change** located above the list and follow the on screen prompts.
6. Click **Finish** when the “Uninstall Complete” message is received.
7. Locate the C:\PdMACorporation folder and delete it. The subfolders will be deleted also. After the installation of MCEGold 3.0.3 SP4 the new folder location will be C:\PdMA Corporation\....
8. Reboot your computer.
9. Go to step one in the Disable Driver Signature Enforcement section.

## Disable Driver Signature Enforcement

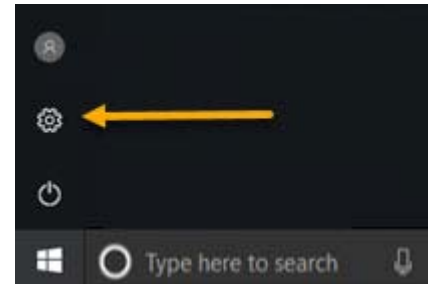
**NOTE:** To install MCEGold 3.0.3 SP4 on a Windows 10 operating system, the operating system must be in the “Disable driver signature enforcement” mode.

Use the following steps to enter the Disable driver signature enforcement installation mode.

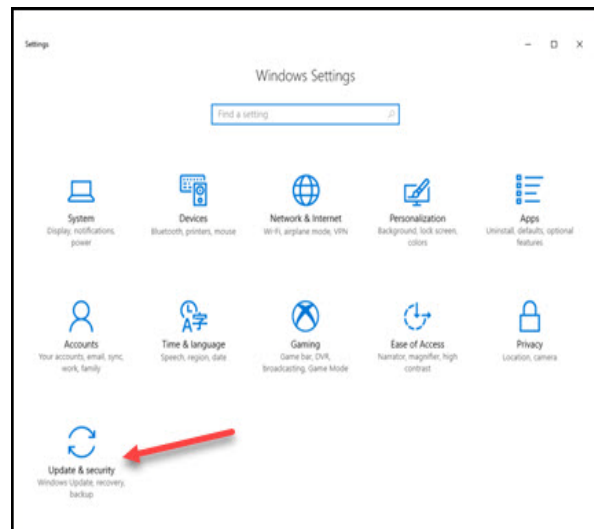
1. From the main Windows 10 screen, click the **Start** button in the lower left corner of the computer screen.



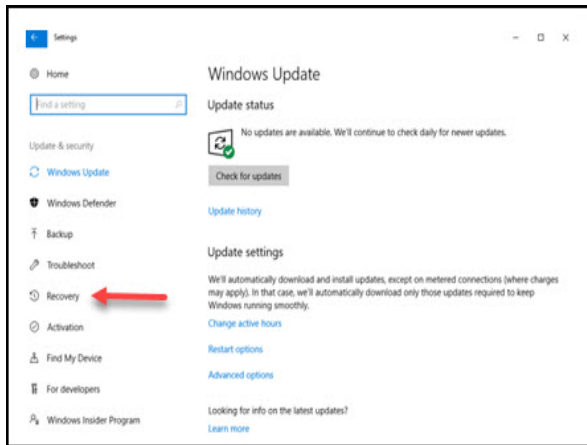
2. Click **Settings**.



3. From the Windows Settings window, select **Update and Security**.



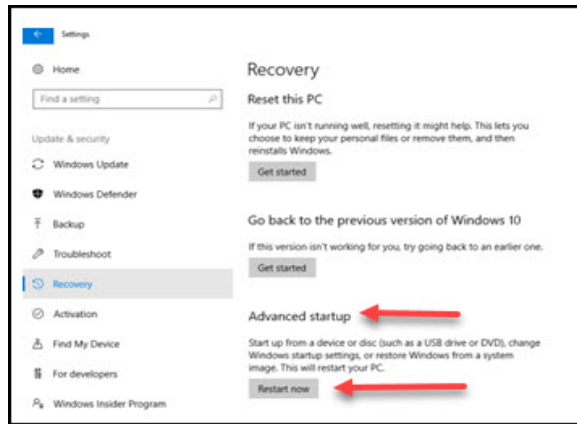
4. From the Windows Update window, select **Recovery**.



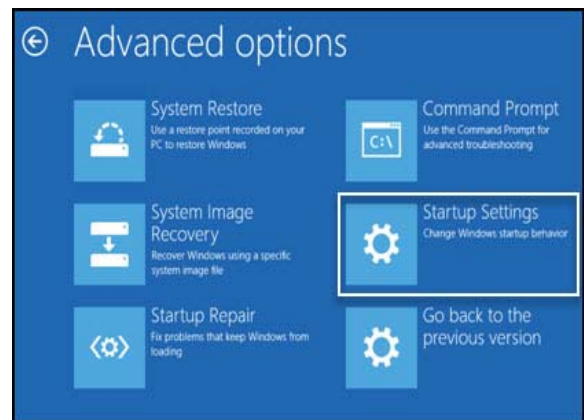
7. From the Troubleshoot window, Select **Advanced options**.



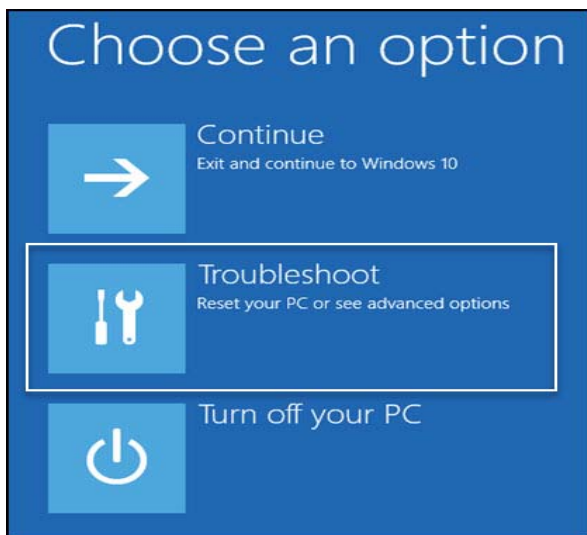
5. From the Recovery window, in the Advanced startup section, click **Restart now**.



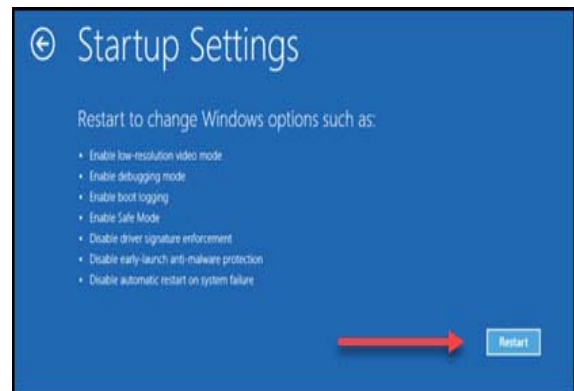
8. From Advanced Options window, Select **Startup Settings**.



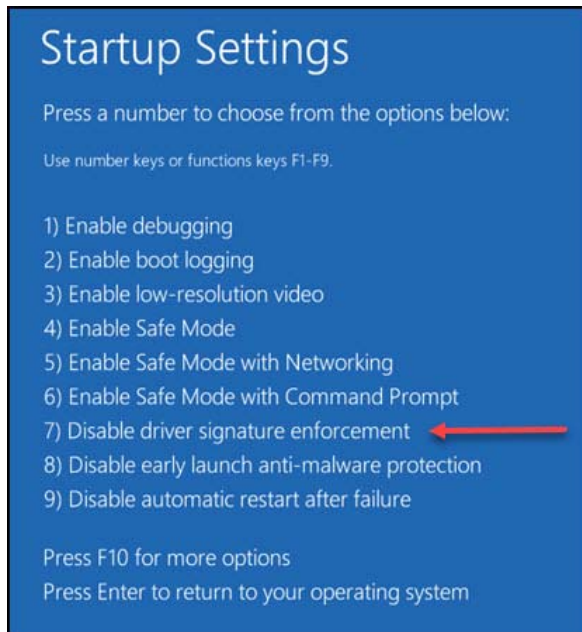
6. From the Choose an option window, select **Troubleshoot**.



9. From the Startup Settings window, click **Restart**.



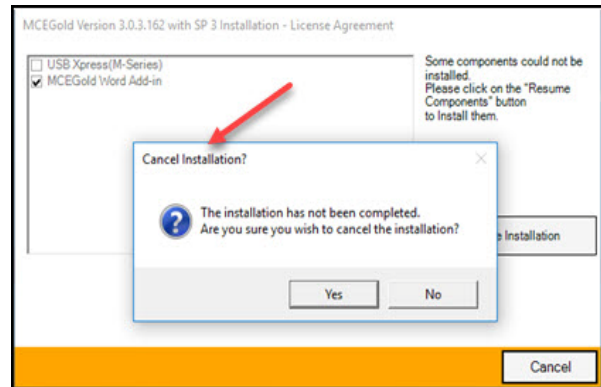
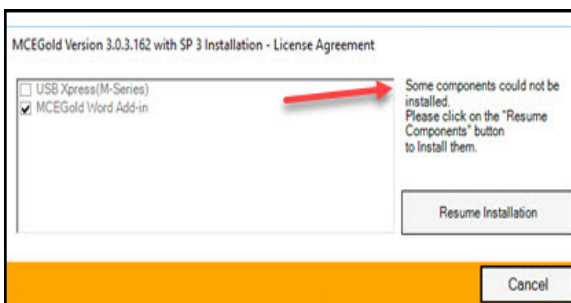
10. From the next Startup Settings window, press # 7 to select **Disable driver signature enforcement**.



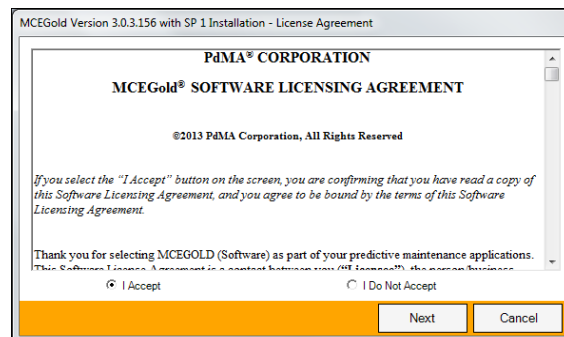
11. The computer displays the start up screen.

## MCEGOLD 3.0.3 SP4 INSTALLATION

**NOTE:** During the installation process, if you see either of the following windows or messages: MCEGold – **Some components could not be installed**, or MCEGold – **Cancel Installation?**, then Windows 10 has not been configured to allow unsigned driver installation. See the section *Prepare Windows 10 for MCEGold 3.0.3 SP4 Installation*.



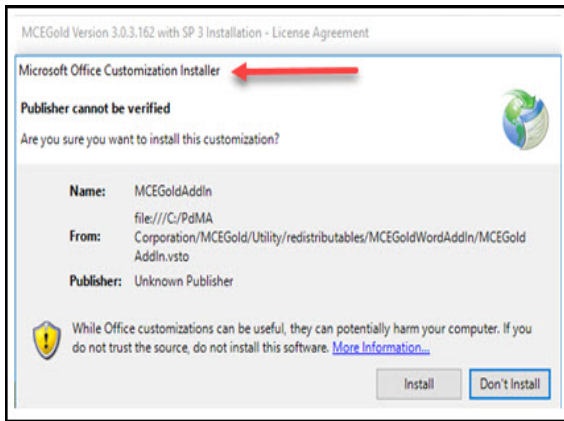
1. Insert the MCEGold 3.0.3 SP4 USB flash drive into the USB port. If the installation does not begin automatically, run setup.exe from the USB flash drive. (Select Run, setup.exe from the AutoPlay window).
2. Right click on setup.exe and select Run as administrator.
3. The License Agreement window opens. Read the PdMA license and select the “I Accept” option button. The **Next** button becomes visible. Click **Next**.  
Note: If you do not accept the terms, the **Next** button is not visible, you can only click **Cancel**, which closes the software without installing it.



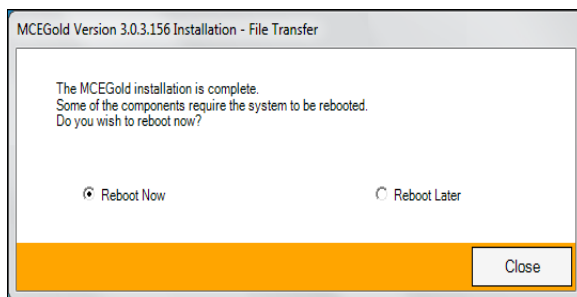
4. In the License Key window enter your Company Name and License Key exactly as provided by PdMA. You may copy and paste the license key using the paste button.
5. Click **Submit** (located to the right of the Company Name). When the license has been verified a green check appears. The **Next** button appears. Click **Next**.

6. In the Installation Path window, accept the default shown in the text box (recommended) for the location to install the MCEGold program folder or using the drop-down list select an alternate location, make a note of it for your future use, and click **Next**. Note: It is not suggested to use an alternate location because that can cause conflict and Windows rights problems.
7. When prompted, click **Install Components**. Some components may require additional prompts.

Note: When installing MCEGold, a Word Add-in driver is installed. You may receive a message informing you that “Windows can’t verify the publisher of this driver software.” Select “Install”.



8. When the installation of components is complete the **Next** button appears. Click **Next**.
9. A progress bar shows the progress of copying files to your computer.
10. When the installation is complete you must reboot your system. Select the Reboot Now option and click **Close**.



11. After rebooting, locate and copy the backup Emaxprb.xml file and the Template folder back into their appropriate locations in
  - C:\PdMA Corporation\MCEGold\Emax
  - C:\PdMA Corporation\MCEGold\Report

12. Answer Yes to “Merge the folder?” inquiry.

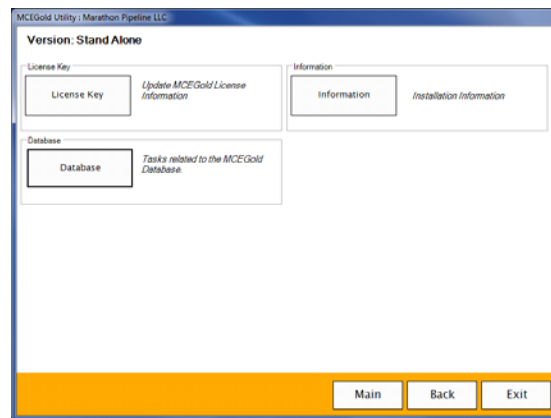
13. Remove the MCEGold 3.0.3 SP4 USB flash drive from the computer.

## DATABASE SETUP

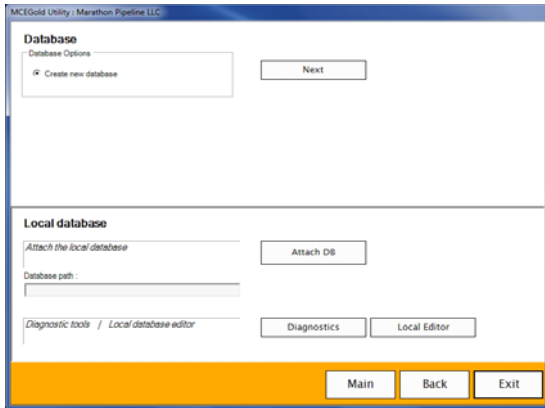
**Note:** This procedure is for connecting to an existing database that is to be upgraded to MCEGold 3.0.3 SP4.

To connect to an existing database, please follow the instructions below.

1. Ensure you have properly backed up the database you are converting.
2. Open the Utility program and click the **Database** button.

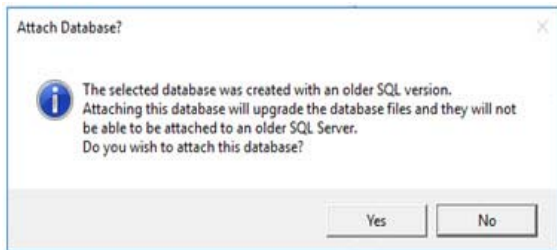


3. Click **Attach DB** as shown in the screen below.

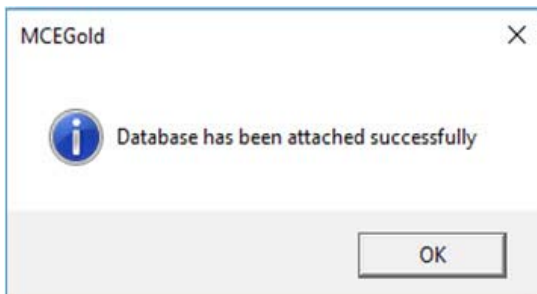


4. Navigate to the database location on your computer and select the desired database.

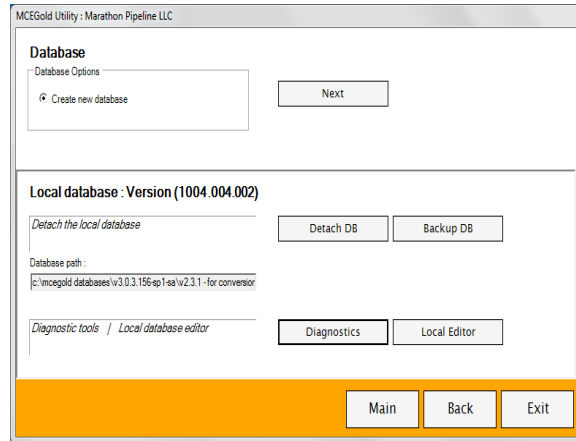
If you receive the following message: “The database you selected was created with an older SQL version”, the database needs to be upgraded to SQL 2008. **Stop!** Click **No**. Do **NOT** proceed! Contact Technical Support.



5. If the database attached properly you will see the following window. Click **OK**.



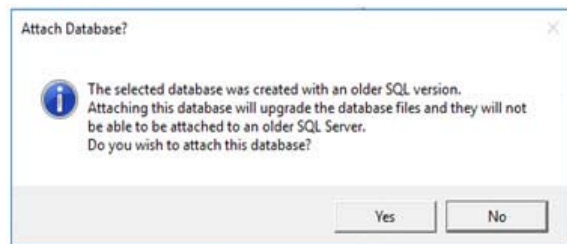
6. The MCEGold Utility Database Window opens. Click **Exit**.



## START MCEGOLD

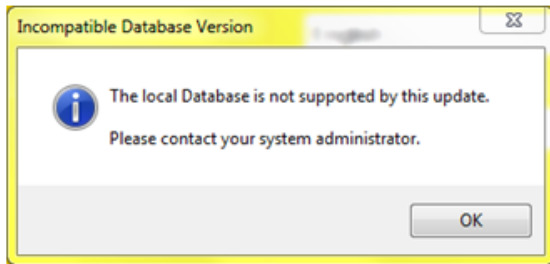
1. Start MCEGold.

If you receive the following message: “The database you selected was created with an older SQL version”, the database needs to be upgraded to SQL 2008. **Stop!** Click **No**. Do **NOT** proceed! Contact Technical Support.

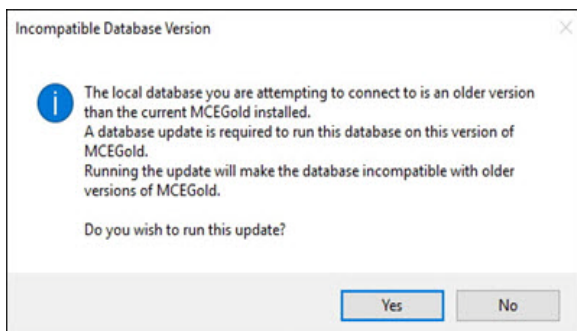


If you receive the following “local database is not supported by this update” message when trying to start MCEGold, the attached database is too old for conversion and needs to be updated to MCEGold 2.6.1 or later prior to updating to MCEGold 3.0.3 SP4.





If you receive the following “Incompatible Database Version” message, shown on page 7, when trying to start MCEGold, you are attempting to run MCEGold with a database that is older than V3.0.3-SP4. You will be prompted to update the database. If you have properly backed up your existing database, click **Yes** to run the update. If you have not backed up your existing database, click **No**, backup the database, and then perform the Database Setup procedure.



2. Click **OK** on the message window. The message window closes, leaving the MCEGold Login window open.
3. If there is another database available, click on **Search** (the three dots on the right of Site) to bring up the navigator to search for the other database. If none are available, click **Cancel** to exit out of MCEGold, and contact PdMA Technical Support at 813-621-6463 ext. 251.