

# TECHNOTE 1202

## ISSUED

June, 2012

## SUBJECT

MCEGold update to MCEGold 2.5.1 SP1

## DESCRIPTION

TechNote 1202 supersedes TechNote 1201 and describes the update installation procedure and changes to the application.

MCEGold 2.5.1 SP1 adds new icons on the toolbar and throughout the application. Additionally Windows 7 64-bit compatibility was added, EMAX Auto Pre-Save Data Validation, the ability to Print and Export WatchLists, and more. A PDF document of the full MCEGold 2.5.1 SP1 release highlights is available for you to view on the Installation Disc in the Release Highlights Folder.

## MCEGOLD 2.5.1 SP1 UPDATE INSTALLATION

### **Note:**

- MCEGold 2.5.1 SP1 is not compatible with testers requiring a Data Acquisition Card (DAQ).

- Installing the MCEGold 2.5.1 SP1 update will require an upgrade of the Microsoft SQL Server 2005 to SQL Server 2008.

- If you have a Microsoft Windows XP operating system, contact PdMA Tech Support (813-621-6463 ext.251) prior to the 2.5.1 installation.

### **Minimum Requirements:**

H-Series Tester, 2.0+GHz Intel i5 or equivalent processor, 2+ G RAM.

## Server Update for Network Users

**Note:** Ensure the user account used to update the server has “sysadmin” permissions.

There is a separate application on the Installation Disc to update the network database on the server. *The database must be updated on the server first, then the desktops and field testers.*

If the update is installed on a network field tester before the server database is updated, a warning message appears informing you the database is an old version and to contact your system administrator. If the warning message is ignored, when trying to connect to the network “Can’t connect to the database. See your IT department.” appears.

1. Insert the disc into the drive. If the disc starts automatically, click **Exit** and proceed to the next step
2. Locate the MCEGold Database Server Update folder on the MCEGold 2.5.1 SP1 Disc.
3. Click on the MCEGold Database Server Update.exe file.
4. The Server Information window opens. Fill in the Server, Database, Login, and Password information.
5. Click **Run Update**. The progress status will display on the window.
6. When the update complete message displays, close the window.

## Stand Alone Users/Field Tester

**Note:** MCEGold 2.5.1 SP1 will require an upgrade of the Microsoft SQL Server 2005 to SQL Server 2008. Therefore, any stand alone database opened will be updated to SQL Server 2008 and will no longer open with another machine running an older version of MCEGold using SQL Server 2005.

If you are updating from an MCEGold version older than 2.1.5 or Microsoft Windows XP operating system you must first call PdMA Tech Support (813-621-6463 ext. 251).

If you have MCEGold 2.1.5 or later version you *may* need to uninstall Microsoft SQL Server 2005 and MCEGold before installing MCEGold 2.1.5 SP1. See the *MCEGold 2.1.5 and Later* instructions.

### **MCEGold Prior to 2.1.5**

Call Tech Support (813-621-6463 ext.251)

### **MCEGold 2.1.5 and Later**

When you initially insert the MCEGold 2.5.1 SP1 disc into the computer it will detect which version of Microsoft SQL Server is on your computer. You may receive a pop-up window alerting you that Microsoft SQL Server 2005 is installed on your computer. If that is the case you must uninstall Microsoft SQL Server 2005 **AND** MCEGold before installing MCEGold 2.5.1 SP1.

To uninstall Microsoft SQL Server 2005 see the *Uninstall SQL Server 2005* section below. To uninstall MCEGold see the *Uninstall MCEGold* section.

If the software detects Microsoft SQL Server 2008 on your computer you will be ready to install MCEGold 2.5.1 SP1. Go to the section titled *Update - MCEGold 2.5.1 SP1*.

### **Uninstall SQL Server 2005**

1. Select Start, then Control Panel, and double click the Add or Remove (Programs and Features in Windows 7) icon.
2. In the Add or Remove Programs (Uninstall or change a program in Windows 7) window scroll down to locate Microsoft SQL Server 2005. Click on the program name to expand the information box. (In Windows 7 select Microsoft SQL Server 2005 from the list.)
3. Click **Remove (Uninstall)** - located above the list in Windows 7) and follow the on screen instructions.
4. Click **Finish** when the “Uninstall Complete” message is received.
5. Close the Add or Remove Programs window.

## **Uninstall MCEGold**

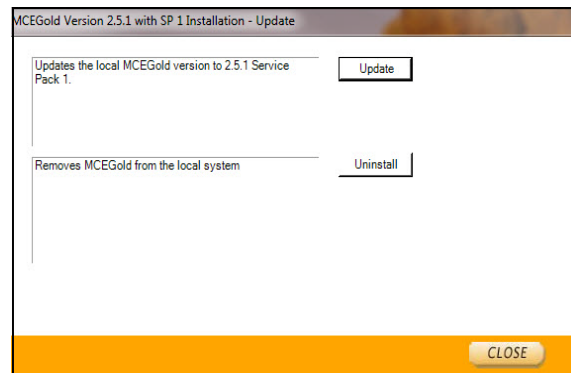
### **Backup**

Before beginning the uninstall copy the MCECal.xml and Emaxprb.xml files and complete Templates folder to a safe location and make note of the location.

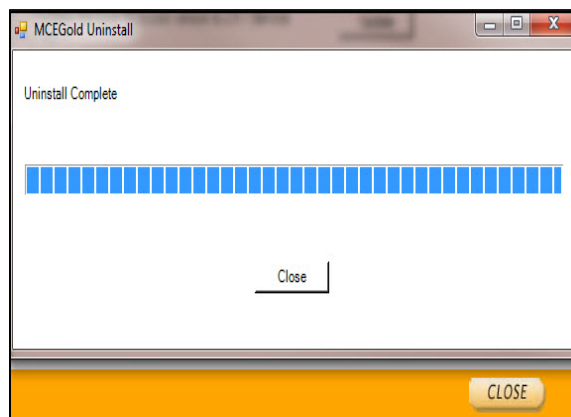
The files are located in:

C:\Program Files\PdMA Corporation\MCEGold\Mce  
C:\Program Files\PdMA Corporation\MCEGold\Emax  
C:\Program Files\PdMA Corporation\MCEGold\Report

1. Insert the MCEGold 2.5.1 SP1 Disc into the drive. If the installation does not begin automatically, run Setup.exe from the disc. (Select Run setup.exe from the AutoPlay window in Windows 7).
2. The Installation Update Window opens. Select **Uninstall**.



3. Answer **Yes** in the Uninstall MCEGold? window.
4. In the MCEGold Uninstall window click **Uninstall** to begin the process.
5. A progress bar is displayed. When the Uninstall Complete” message is received, click **Close**.



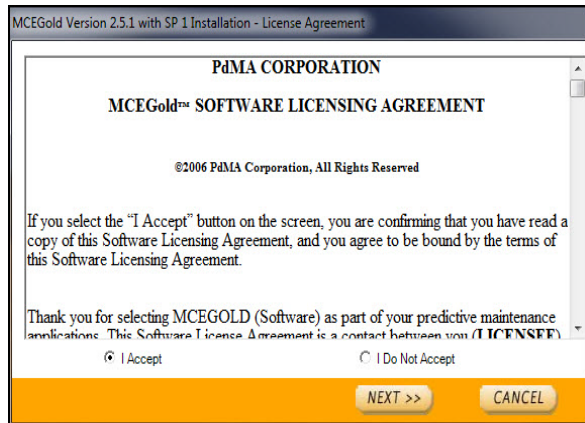
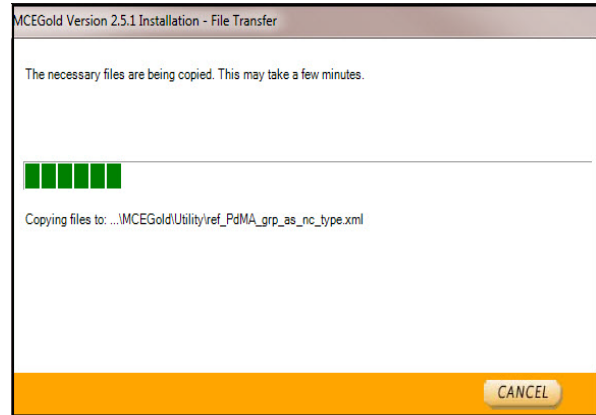
- The software will automatically close. Remove the disc.
- Go to step one in the Install - MCEGold 2.5.1 SP1 section.

- When the installation of components is complete the **Next** button appears. Click **Next**.
- A progress bar shows the progress of copying files to your computer.

### Install MCEGold 2.5.1 SP1

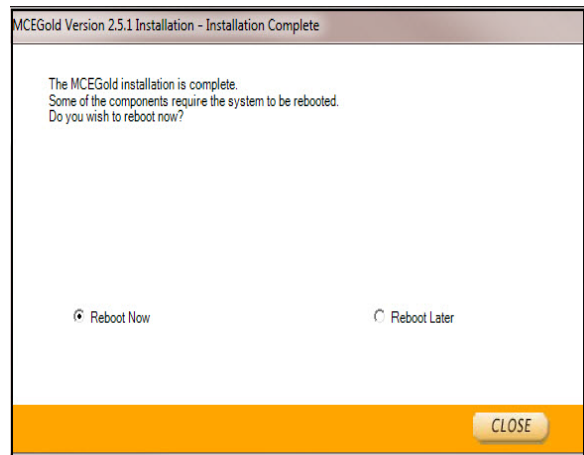
- Insert the MCEGold 2.5.1 SP1 Disc into the drive. If the installation does not begin automatically, run Setup.exe from the disc. (Select Run setup.exe from the AutoPlay window in Windows 7).
- An Installer window displays the progress in preparing a guide for the setup process.
- The License Agreement window opens. Read the PdMA license and select the “I Accept” option button. The **Next** button becomes visible. Click **Next**.

Note: If you do not accept the terms, the **Next** button is not visible, you can only click **Cancel**, which closes the software.



- In the License Key window enter your Company Name and License Key exactly as provided by PdMA. The License Key is not the same as the Module Activation Key, which activates various modules.
- Click **Submit** (located to the right of the Company Name space). After the license has been verified the **Next** button appears. Click **Next**.
- In the Installation Path window, select the location to install the MCEGold program folder using the drop-down list or accept the default shown in the textbox and click **Next**.
- When prompted, click **Install Components**.

- When the installation is complete you must reboot your system. Select the Reboot Now option and click **Close**.

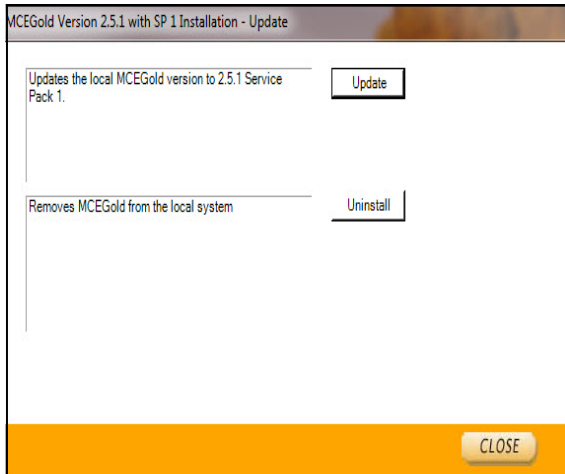


- After rebooting, locate and copy the backup MCECa1.xml and Emaxprb.xml files and the Template folder back into their appropriate locations in C:\Program Files\PdMA Corporation\MCEGold. See the Backup section in this document for file locations. Answer Yes to the “OK to overwrite existing folder” inquiry.

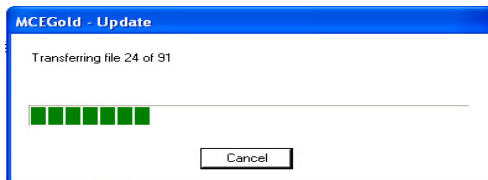
### Update - MCEGold 2.5.1 SP1

- Insert the MCEGold 2.5.1 SP1 Disc into the drive. If the installation does not begin automatically, run Setup.exe from the disc.

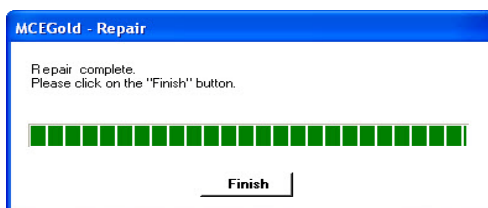
- The Installation Update Window opens.



- Select **Update**.  
**Note:** Selecting Uninstall removes the existing MCEGold software from your system. That option is not necessary for this update.
- The installation software will scan your computer for the necessary programs to be added or upgraded and list them in the MCEGold 2.5.1 SP1-Component Installation window.
- When prompted, click **Install Components**. Click **Next** when the installation is complete.
- The MCEGold Update window opens and displays a progress bar.



- Click **Finish** when the update or repair complete message is received.



- When the installation is complete you must reboot your system.

## INTERNATIONAL LANGUAGE

Currently the languages supported are English, Spanish, and Chinese. Plans are in process to add additional languages.

### Activating Language Feature

In order to use the Language feature you must first enter the Module Activation Key and then install the Language Pack.

If a Module Activation Key did not come with your MCEGold 2.5.1 SP1 Disc or if your current Module Activation Key does not activate the Language package contact PdMA Corporation Technical Support at 813-621-6463 ext. 251.

The Language Pack file is available for download from our website (<http://www.pdma.com/PdMA-downloads.php>) or by contacting Technical Support at 813-621-6463 ext. 251.

### Module Activation Key

Prior to starting MCEGold it is necessary to enter the Module Activation Key in the MCEGold Utility program. Entering the Module Activation Key once unlocks all language packs available.

- Locate the Utility programs at:

C:\ProgramFiles\PdMACorporation\MCEGold\Utility\Utility.exe or Start\All Programs\PdMA Corporation\Utilities.

- Double click the Utility.exe file.
- In the Utility program click the License Key button.
- Enter the Module Activation Key in the corresponding textboxes.

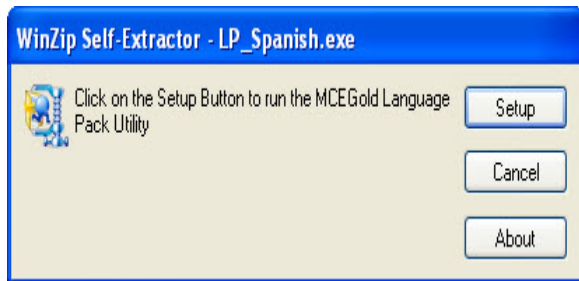
Click **Submit**, then **Exit**.

### Install Language Pack

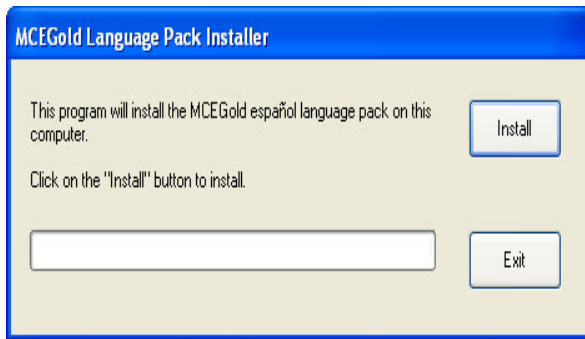
Language Pack downloads are found in the International Language Pack section on the download page of the

PdMA website (<http://www.pdma.com/PdMA-downloads.php>).

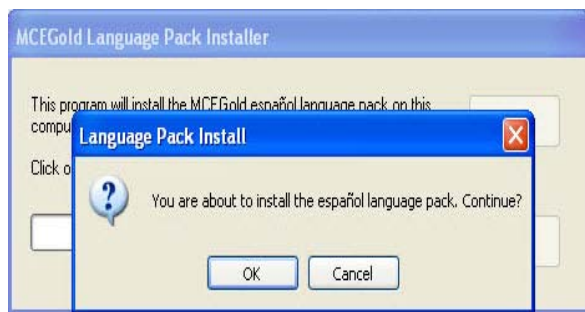
1. Click the language pack desired.
2. The File Download - Security Warning window opens. Click **Run**.
3. Click **Run** in the next File Download - Security Warning window.
4. A progress window appears. No action is required.
5. In the WinZip window click **Setup**.



6. In the MCEGold Language Pack Installer window verify you are installing the desired MCEGold language pack on your computer and click **Install**.



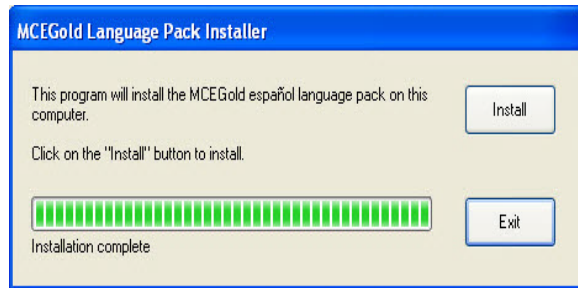
7. A second installation verification window asks you to verify the installation. Click **OK**.



8. Upon completion of the installation an Installation Successful window opens. Click **OK**.



9. To finish the installation, click **Exit** in the MCEGold Language Pack Installer window.



### Starting Language Feature

1. Start MCEGold 2.5.1 SP1.
2. In the Login window click the arrow on the right side of the Language box.

**Note:** If you do not see all of the installed languages you need to cancel MCEGold and go to the Utility window to enter your Module Activation Key. See *Activating Language Feature* in this TechNote for instructions.

3. Select the desired language and click **OK**.

It is possible to revert to English by exiting MCEGold, restarting, and selecting English from the Language box in the Login window.