

# TECHNOTE 0901

## ISSUED

June, 2009

## SUBJECT

MCEGold update to MCEGold 2.2.

## DESCRIPTION

TechNote 0901 describes the update installation procedure, a modification to the Step Voltage test, and an overview of the new Asset Scheduler and Energy Cost Analysis Modules. All users may not get the Asset Scheduler and/or Energy Cost Analysis Modules.



*The installation procedure described in this TechNote supersedes the procedure in the Getting Started Guide.*

## MCEGold 2.2 Update Installation

### Server for Network Users

There is a separate program on the CD to update the network database on the server. ***The database must be updated on the server first, then the desktop and field testers.***

If the update is installed on a network field tester before the server database is updated, a warning message appears informing you the database is an old version and to contact your system administrator. If the warning message is ignored, then when trying to connect to the network “Can’t connect to the database. See your IT department.” appears.

1. Insert the CD into the drive. It will not auto-run.
2. Locate the MCEGold Database Server Update folder.
3. Click on the MCEGold Database Server Update.exe file.
4. The Server Information window opens. Fill in the Server, Database, Login, and Password information.

5. Click **Run Update**. The progress status will display on the window.
6. When the update complete message displays, close the window.

### Stand Alone Users/Field Tester

If you are updating from an MCEGold version older than 2.1.5 you must first uninstall MCEGold and the Microsoft SQL Server Desktop Engine (MCEGold) programs. Follow the *MCEGold prior to 2.1.5* instructions.

If you have an MCEGold 2.1.5 or later version follow the *MCEGold 2.1.5 and later* instructions.

### MCEGold Prior to 2.1.5

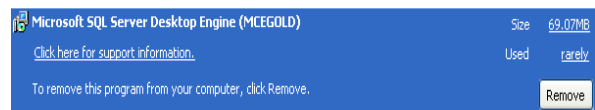
#### Backup

Copy the MCECal.xml and EMAXCal.xml files and complete Templates folder to a safe location. These files are located in:

C:\Program Files\PdMA Corporation\MCEGold\Mce  
C:\Program Files\PdMA Corporation\MCEGold\Emax  
C:\Program Files\PdMA Corporation\MCEGold\Report

#### Uninstall

1. Select Start, select Control Panel, and double click the Add or Remove icon.
2. In the Add or Remove Programs window scroll down to locate the Microsoft SQL Server Desktop Engine (MCEGold). Click on the program name to expand the information box.



3. Click **Remove**.
4. Locate the MCEGold Version x.x.x file and click on the program name to expand the information box.
5. Click **Remove** and follow the on screen instructions.

6. Click **Finish** when the “Uninstall Complete” message is received.
7. Close the Add or Remove Programs window.

### Installation

1. Insert the MCEGold 2.2.0 CD into the drive. If the installation does not begin automatically, run Setup.exe from the CD.

2. In the License Agreement window, read the PdMA license. Select the “I accept” option button. The Next button becomes visible. Click **Next**.

Note: If you do not accept the terms, the Next button is not visible, you can only click Cancel, which closes the software.

3. In the License Key window enter your Company Name and License Key exactly as provided from PdMA. The License Key is not the same as the Module Activation Key, which activates the Asset Scheduler and/or Energy Cost Analysis modules.

4. Click **Submit**. After the license has been verified the Next button appears. Click **Next**.

5. In the Installation Path window, select the location to install the MCEGold program folder using the drop-down list or accept the default shown in the textbox and click **Next**.

6. The installation software will scan your computer for the necessary programs to be added or upgraded and list them in the MCEGold Version 2.2.0-Component Installation window.

7. When prompted, click **Install Components**. Click **Next** when the installation is complete.

8. When the installation is complete you must reboot your system.

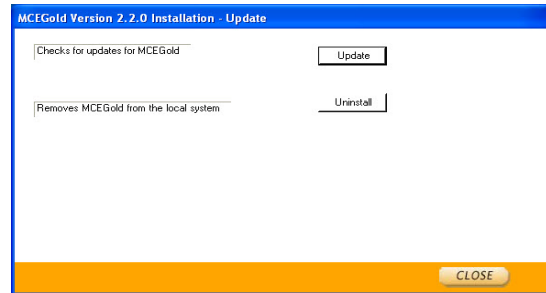
9. Copy the backup MCECal.xml and EMAXCal.xml files and the Template folder back into their appropriate locations in C:\Program Files\PdMA Corporation\MCEGold. See the Backup section in this document for file locations. Answer Yes to the “OK to overwrite existing folder” inquiry.

### MCEGold 2.1.5 and Later

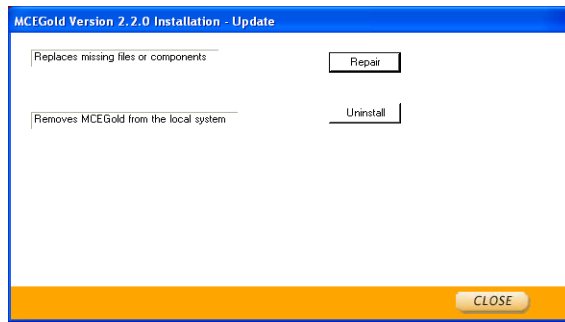
1. Insert CD into disk drive. It will auto-start to the InstallShield program.

2. The Installation Update Window opens.

If you are updating from 2.1.5 the choices will be **Update** or **Uninstall**.



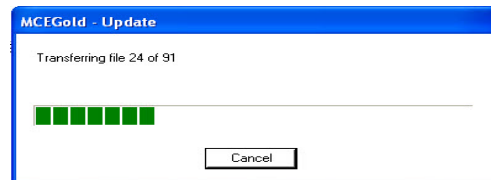
If you are updating from 2.2.0 the choices will be **Repair** or **Uninstall**.



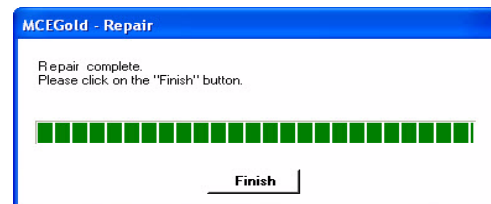
3. Select **Update** or **Repair**, depending on your software version.

Note: Selecting **Uninstall** removes the existing MCEGold software from your system. That option is not necessary for this update.

4. The MCEGold Update window opens and displays a progress bar.



5. Click **Finish** when the update or repair complete message is received.



6. It may be necessary to restart your computer to finalize the installation. You will be prompted to restart if needed.

## Step Voltage

The Step Voltage test now begins with a pre-charge (PI) before automatically running the Step Voltage test. The default time for the pre-charge (PI) is 600 seconds, however the pre-charge (PI) may be stopped and the Step Voltage test started by clicking the **Start Step Voltage** button. The pre-charge (PI) results are charted in the upper left pane. At the conclusion of a complete 600 seconds of testing, the pre-charge (PI) results are saved in the PI Test History and the Step Voltage results are saved in the Step Voltage Test History.

Other than beginning with the pre-charge (PI), the Step Voltage test operates as described in the Product Support Manual on page 4-24.

## Asset Scheduler Module

The Asset Scheduler Module allows an asset to be set up for scheduled testing on a one-time or reoccurring basis. The following is a short overview of the program. A more detailed description is found in Appendix B of the Product Support Manual.

**Note:** For Network the user must have assigned rights to create schedules.

### Activating the Asset Scheduler Module

Prior to starting MCEGold, it is necessary to enter the Module Activation Key in the MCEGold Utility program located at C:\Program Files\PdMACorporation\MCEGold\Utility\Utility.exe.


In the Utility program click the **License Key** button and enter the Module Activation Key in the textboxes. Then click **Submit**.

Entering the Module Activation Key once will unlock all modules available to you.

If a Module Activation Key did not come with your CD contact PdMA Corporation at 813-621-6463.

### Starting Asset Scheduler

1. Highlight the asset to be scheduled. This can be done from the Site Navigator, WatchList, or Site Condition list.

2. Click the Scheduler icon  on the toolbar.
3. In the Asset Schedule Configuration window click **New** for reoccurring schedules or **OneTime Schedule**. If there are previously created schedules for this asset they will be listed in the window.
4. In the Asset Scheduler window, highlight the Action desired and use the arrow button (>>) to move it to the Assigned Actions list.

Note: The Available Actions items are displayed according to the selection made in the drop down list, i.e., MCE or EMAX. It is possible to select both MCE and EMAX items for one schedule.

5. Fill in appropriate text boxes. Some maybe filled in by typing in the box and some will be filled in by selecting from a drop down list. If the Runs Forever check box is checked the To text box will be inactive.
6. Click **OK**.
7. The schedule is displayed in Asset Schedule Configuration window. When it is time for a schedule to be generated it will appear in the Message Center.
8. Click **Close**.

### View Scheduled Jobs

The schedules are viewed in the Message Center. There are two choices for viewing scheduled jobs: a single asset or all assets with scheduled jobs. The outcome is controlled by the Active Asset Only selection in the View menu.

If Active Asset Only is checked (default) then only the scheduled jobs for the selected asset will appear when the Schedules icon is clicked.

If Active Asset Only is unchecked then scheduled jobs for all assets will appear when the Schedules icon is clicked.

Click the + sign to expand the line and view the details. Click the - sign to collapse the lines.

# Energy Cost Analysis

## Module

The Energy Cost Analysis Module analyzes operating and replacement cost for Design B AC Induction motors only. The following is a short overview of the program. A more detailed description is found in Appendix C of the Product Support manual.

### **Activating the Energy Cost Analysis Module**


Prior to starting MCEGold, it is necessary to enter the Module Activation Key in the MCEGold Utility program located at C:\Program Files\PdMACorporation\MCEGold\Utility\Utility.exe.

In the Utility program click the **License Key** button and enter the Module Activation Key in the textboxes. Then click **Submit**.

Entering the Module Activation Key once will unlock all modules available to you.

If a Module Activation Key did not come with your CD contact PdMA Corporation at 813-621-6463.

### **Starting Energy Cost Analysis**

1. Highlight the asset to be analyzed. This can be done from the Site Navigator, WatchList, or Site Condition list. The asset being analyzed should have EMAX Power test data.
2. Click the Energy Analysis icon  on the toolbar.
3. The Energy Cost Analysis window opens with four tabs providing access to areas for comparison.

### **Asset Information Tab**

The existing asset nameplate information on the left side is automatically generated from the asset selected and may not be changed. The Nameplate and Measured text boxes located on the right side may be changed in order to answer the “what if” questions. To return to the original values, click the **Reset Data** button.

### **Replacement Asset Tab**

There are three ways to add values to this section.

The first method is to copy the information from the asset being analyzed by clicking **Copy Existing Asset Information**.

The second method is to select another asset by searching. Enter values in the Search for an Asset area, then click **Find an Asset**. Make your selection from the list of assets. The values for the selected asset will populate the appropriate text boxes.

Third, enter the nameplate information manually.

While some of the values in the Replacement Asset section may be manually changed, the blue text boxes in the Estimated column cannot be changed.

### **Energy/Operating Hours Tab**

Fill in the appropriate values in the text boxes for the existing and replacement asset for comparison purposes. Values in the blue text boxes are calculated values and cannot be changed.

The values entered in these text boxes are used to calculate the values in the Energy Cost Analysis area.

### **Energy Cost Analysis Tab**

The energy and operating hours comparison is displayed for the existing and replacement asset. No values can be changed here. Use the Energy/Operating Hours tab to change values.

The section below the dark line regarding repair or replace can be changed to compare the cost of repairing the existing asset or replacing it. Enter values in the appropriate text boxes, with the exception of the blue text boxes which are calculated values and cannot be manually changed.

The only value that can be manually changed in the Payback and Recovery area is the Interest Rate.

When the values have been entered, click **Preview Report** to display a two page preview that can be printed or saved to PDF or HTML format.

### **Network User Rights**

In order to view or create WatchLists, use the Asset Scheduler program, or Sync assets, the user must be assigned those rights by the network administrator using the Account Manager program.