

# TECHNOTE 0803

## ISSUED

July, 2008

## SUBJECT

Update from MCEGold 2.1.3 to MCEGold 2.1.5.

## DESCRIPTION

TechNote 0803 describes the hardware configuration changes, installation procedures when upgrading from MCEGold 2.1.3 to MCEGold 2.1.5, and importing data from an external device.

## Hardware Change

The software has been upgraded to support the new USB data acquisition capability. In the MCEGold Product Support Manual on page 2-4, Figure 2-4, the DAQ/216B cable is shown as number 9. The cable will not ship with new testers.

## Installation Procedure

This procedure supersedes the procedure contained in the Getting Started Guide. Before beginning the installation process it is necessary to back up the database files and template folder, then uninstall two components.

### Backup


Copy the MCECal.xml and EMAXCal.xml files and complete Templates folder to a safe location. These files are located in:

C:\Program Files\PdMA Corporation\MCEGold\Mce

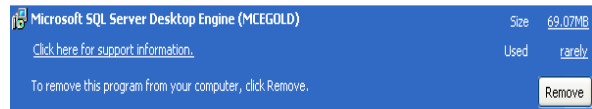
C:\Program Files\PdMA Corporation\MCEGold\Emax

C:\Program Files\PdMA Corporation\MCEGold\Report

### Uninstall

1. Click Start, Control Panel.
2. Double click the Add or Remove icon  in the Control Panel window.

3. In the Add or Remove Programs window scroll down to locate the Microsoft SQL Server Desktop Engine (MCEGOLD). Click on the file name to expand the information box.



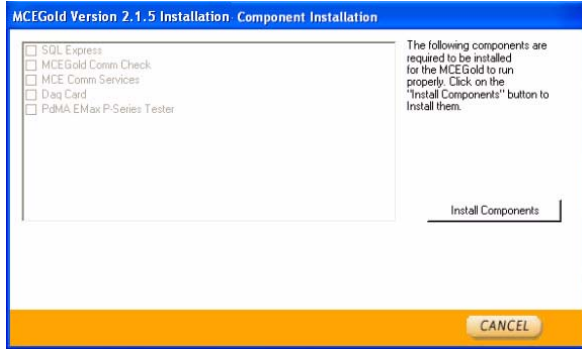
4. Click **Remove**.
5. Locate the MCEGold Version 2.1.3 file and click on the file name to expand the information box.
6. Click **Remove** and follow the on screen instructions.

### Install MCEGold 2.1.5

Note: Installing MCEGold 2.1.5 may take quite a while depending on your computer configuration. During the process various windows will inform you of the installation progress. Not all windows are shown in these instructions. Depending on your computer configuration, the components being installed may vary from those shown in the sample screen captures.

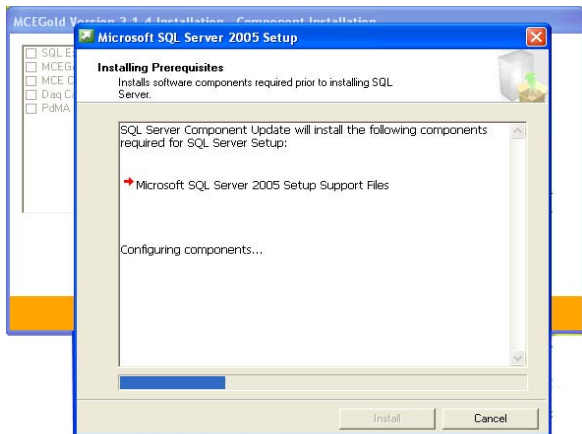
1. Insert the CD into the drive. If the installation does not begin automatically, run Setup.exe from the CD.
2. In the License Agreement window, read the PdMA license. Select the "I accept" option button. The Next button becomes visible. Click **Next**.  
Note: If you do not accept the terms, the Next button is not visible, you can only click Cancel, which closes the software.
3. In the License Key window enter your Company Name and License Key exactly as shown on the label located inside the front cover of the Getting Started Guide.
4. Click **Submit**. After the license has been verified the Next button appears. Click **Next**.

5. The MCEGold-Installation window opens. The installation software will scan your computer for the necessary programs to be added or upgraded and list them in the Component Installation window.

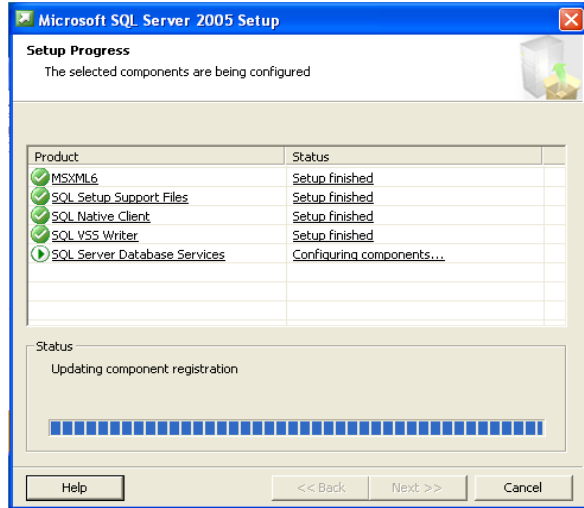


6. Click **Install Components**. On screen status windows will display the progress of the installation.

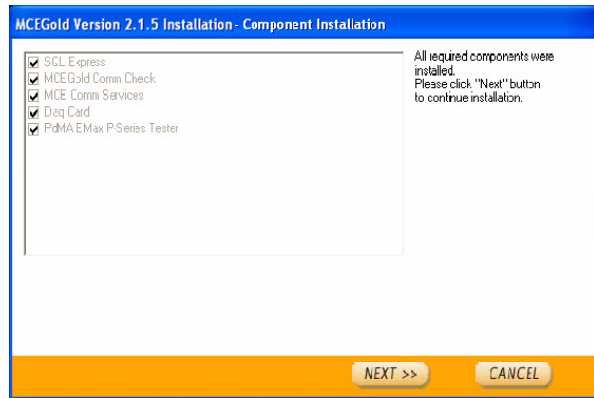
7. The software installs the prerequisites.



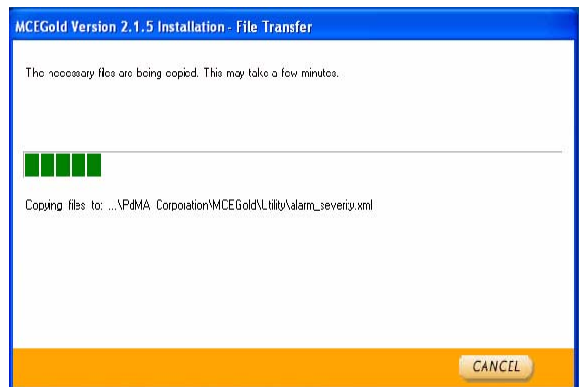
8. At the completion of installing the prerequisites, the components are installed. The Setup Progress window displays the components and their progress status.



9. When all components are installed the Component Installation window appears. Click **Next**.

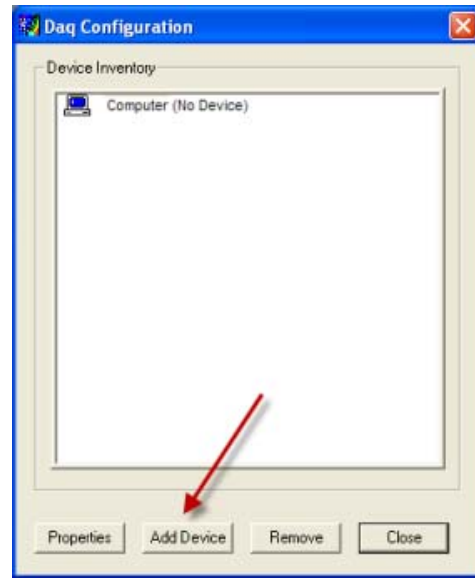
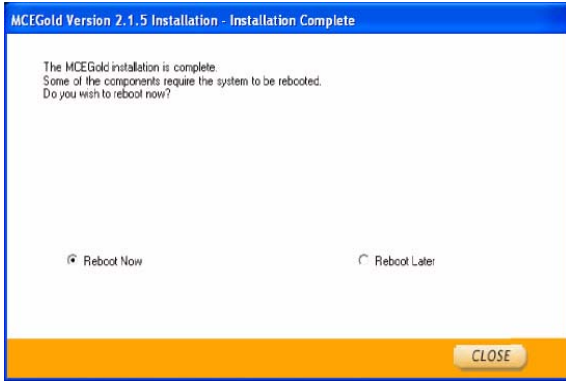


10. After clicking **Next**, the File Transfer window opens. Click **Next** when transfer is complete.



- To update your system with the new files it is necessary to reboot your computer. The default is set to Reboot Now. Click **Close** to reboot. You will be reminded to save and close all open programs.

Note: If you wish to restart your computer later, select Reboot Later and click **Close**.

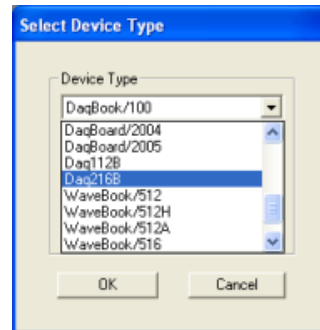


- After rebooting the computer the MCEGold Utility window opens. Selecting the Database button provides a opportunity for you to create a new database, convert an existing WinVis database, or perform other local database functions. Follow the Getting Started Guide to perform these operations. Complete any needed tasks and click **Exit**.

Note: If you have not created a new database or converted an WinVis database the first time MCEGold opens you will receive a “Login Failed” error message.


- Copy the backup MCECal.xml and EMAXCal.xml files and the Template folder back into their appropriate locations in C:\Program Files\PdMA Corporation\MCEGold. See the Backup section in this document for file locations. Answer Yes to the “OK to overwrite existing folder” inquiry.

- Click **Add Device**. The Select Device Type window appears.



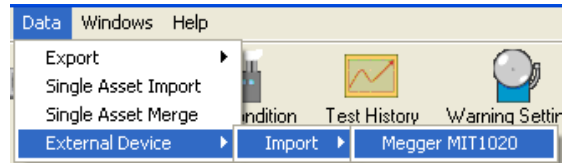
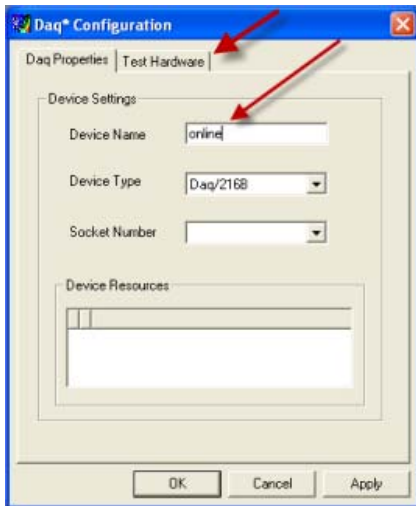
- Select Daq216B and click **OK**. The Daq\* Configuration window appears.

### Reconfigure the Daq Card

- Click Start, Control Panel.
- Double click the Daq\* Configuration icon . The Daq Configuration window appears.

## External Device

MCEGold 2.1.5 software makes it possible to import data collected using an external device, the Megger MIT1020 10kV insulation tester. For purchase specifications, installation, testing, and importing instructions contact PdMA Technical Support at (813) 621-6463 ext. 2 or techsupport@pdma.com.



5. In the Device Name box, type online.
6. Click the Test Hardware tab, then click **Resource Test**.



7. A small dialog box appears, click **OK**.
8. Click **OK** when the test is finished.
9. Click **Close** in the Daq Configuration window.
10. Close the Control Panel.
11. Start MCEGold.