

TECHNOTE 1803-S7

ISSUED

May 2018

SUBJECT

Release of MCEGold® 3.0.3 SP6 - Stand Alone for Windows 7.

DESCRIPTION

MCEGold 3.0.3 SP6 is an upgrade from MCEGold 3.0.3. SP5.

NOTES

- MCEGold 3.0.3 SP6 is only compatible with Windows 10 and Windows 7 and M-Series testers.

- Installation of MCEGold 3.0.3 SP6 on a Windows 10 computer uses a special installation procedure. For a Windows 10 installation refer to TechNote 1803-S10 (Stand Alone) or TechNote 1803-N10 (Network) as applicable.

- MCEGold Word Add-in is only compatible with MS Word 2007 and 2013. MCEGold Word Add-in is NOT compatible with MS Word 2010. Templates created with other versions of MS Word may not be functional and may cause conflicts with the MCEGold software.

- To ensure application accessibility, the default installation location has been set to C:\PdMA Corporation.

- Databases attached to MCEGold 3.0.3 SP6 must be from MCEGold 2.6.1 or later and once updated with 3.0.3 SP6 *will not* be compatible with older versions of MCEGold.

- Assets opened with MCEGold 3.0.3 SP6 *will not* be compatible with older versions of MCEGold.

- If you have any questions, please contact PdMA Technical Support (813-621-6463 ext. 251).

Minimum Requirements

Computer	Dell Latitude E5470 Laptop*
Processor	2+ GHz Intel i5 or equivalent
Resolution	1600 x 900/1920 x 1080 (small font)
Operating System	Microsoft® Windows 7 SP1 (32 or 64 bit)**
Memory	4.0+ G RAM***
Ports/Drives	(1) USB Port in Rear or Side
Hard Disk	20G Available

* Using any other computer manufacturer in conjunction with the PdMA software may result in erratic computer behavior; not limited to but including:

- Power Management Issues
- Lock-up
- Communication Port Malfunction
- Driver Incompatibility
- Display Errors
- SQL Database Incompatibility
- Network Synchronization Issues.

** For International Customers: Windows 7 Ultimate (32 or 64-bit).

***If you are upgrading from MCEGold 2.6.1 - 2.6.2 verify that your computer has at least 4G of RAM.

PREPARE FOR MCEGOLD 3.0.3 SP6 INSTALLATION

NOTE: If you have MCEGold 3.0.3, 3.0.3 SP1, 3.0.3 SP2, 3.0.3 SP3, or 3.0.3 SP4 follow the instructions in Upgrading From MCEGold 3.0.3 or Later.

If you have any version prior to MCEGold 3.0.3 a full uninstall is required before installing version 3.0.3 SP6. See Upgrading From a Version Previous to MCEGold 3.0.3.

Upgrading From MCEGold 3.0.3 or Later

Backup

Before beginning the MCEGold install, copy the Emaxprb.xml file only (not the folder) and the complete Templates folder to a safe location and make note of the location.

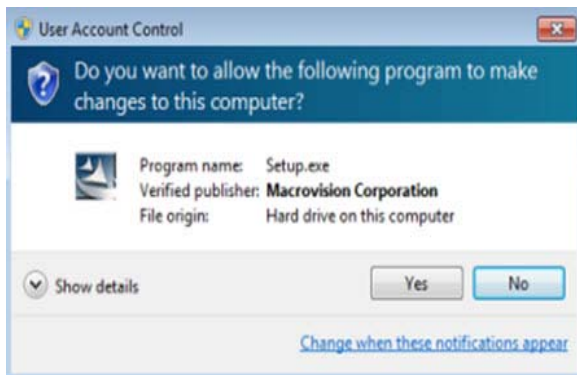
The default location for the files is listed below, however you may have chosen a different location during the original installation.

C:\PdMA Corporation\MCEGold\Emax
C:\PdMA Corporation\MCEGold\Report

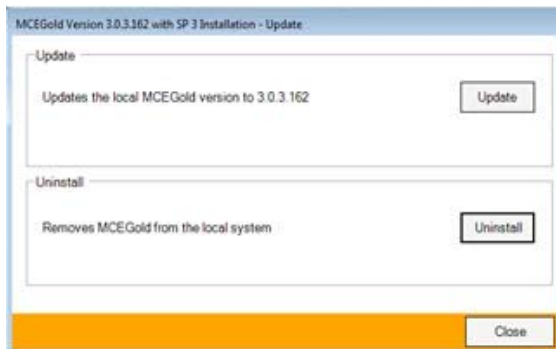
MCEGold 3.0.3 SP6 Installation

NOTE: Some on screen prompts and messages during the installation process are controlled by the Windows operating system and are out of PdMA's control. Every effort has been made to include their possible appearance and the action you should take. However, if you are unsure please contact our technical support department for help.

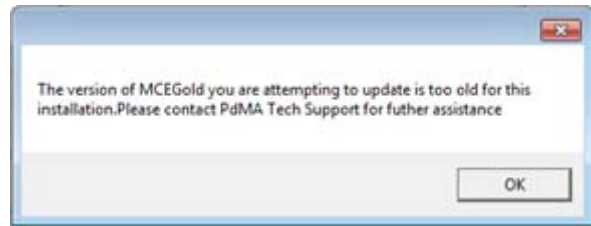
1. Insert the MCEGold 3.0.3 SP6 USB flash drive into the USB port. If the installation does not begin automatically, run setup.exe from the USB flash drive. (Select Run, setup.exe from the AutoPlay window).
2. If you see the User Account Control screen, click **Yes**.



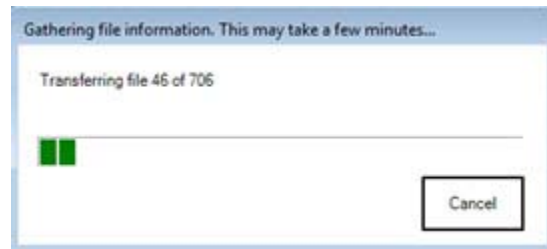
3. If there is an existing MCEGold version installed on your computer, you will see the MCEGold Update screen. click **Update**.



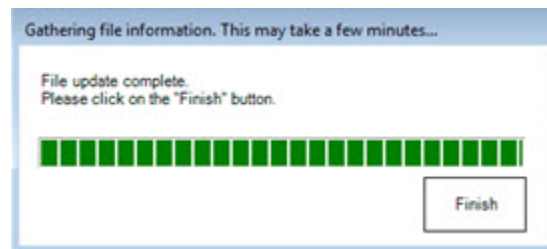
NOTE: If you have a version prior to MCEGold 3.0.3 you will receive the error message shown below. Do **NOT** proceed. Contact technical support.



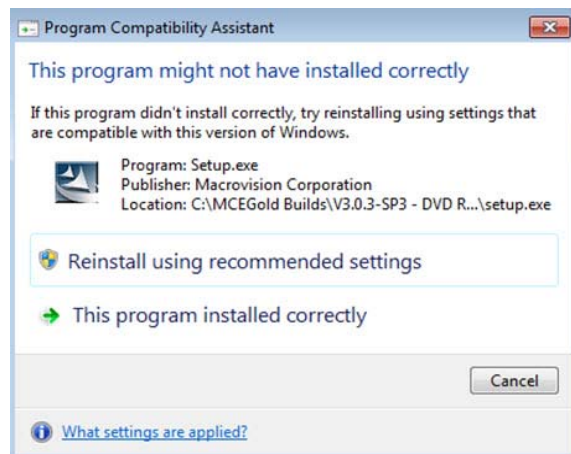
4. The status update window displays.



5. When the update is complete, click **Finish**.



6. If the Program Compatibility Assistant screen displays, select *This program installed correctly*.



7. Go to the Database Setup section.

Upgrading From a Version Prior to MCEGold 3.0.3

Backup

Before beginning the MCEGold uninstall, copy the Emaxprb.xml file only (not the folder) and the complete Templates folder to a safe location and make note of the location.

The default location for the files is listed below, however you may have chosen a different location during the original installation.

C:\PdMA Corporation\MCEGold\Emax

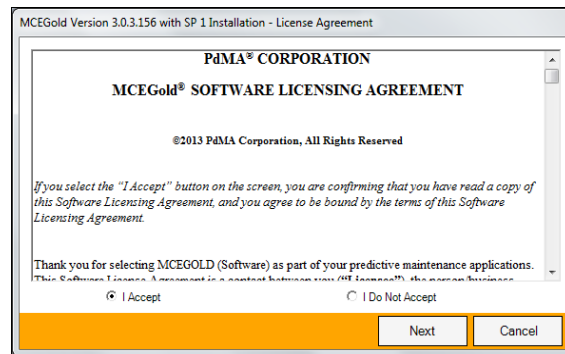
C:\PdMA Corporation\MCEGold\Report

Uninstall

1. Select Start, Control Panel, select Programs, then Programs and Features.
2. In the Uninstall or change a program window scroll down to locate and highlight the MCEGold Version X.X.X on the list.
3. Click **Uninstall/Change** located above the list and follow on screen prompts.
4. Click **Finish** when the “Uninstall Complete” message is received.
5. Locate the PdMA MCEMAX Tester (Driver Removal) file. Highlight it and click **Uninstall/Change** located above the list and follow the on screen prompts.
6. Click **Finish** when the “Uninstall Complete” message is received.
7. Locate the C:\PdMACorporation folder and delete it. The subfolders will be deleted also. After the installation of MCEGold 3.0.3 SP6 the new folder location will be C:\PdMA Corporation\....
8. Reboot your computer.
9. Go to step one in the *MCEGold 3.0.3 SP6* Installation section.

MCEGold 3.0.3 SP6 Installation

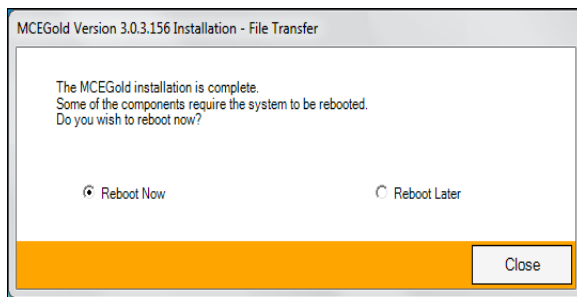
1. Insert the MCEGold 3.0.3 SP6 USB flash drive into the USB port. If the installation does not begin automatically, run setup.exe from the USB flash drive. (Select Run, setup.exe from the AutoPlay window).
2. The License Agreement window opens. Read the PdMA license and select the “I Accept” option button. The **Next** button becomes visible. Click **Next**.
Note: If you do not accept the terms, the **Next** button is not visible, you can only click **Cancel**, which closes the software without installing it.



3. In the License Key window enter your Company Name and License Key exactly as provided by PdMA. You may copy and paste the license key using the paste button.
4. Click **Submit** (located to the right of the Company Name). When the license has been verified a green check appears. The **Next** button appears. Click **Next**.
5. In the Installation Path window, accept the default shown in the text box (recommended) for the location to install the MCEGold program folder or using the drop-down list select an alternate location, make a note of it for your future use, and click **Next**. Note: It is not suggested to use an alternate location because that can cause conflict and Windows rights problems.
6. When prompted, click **Install Components**. Some components may require additional prompts.

Note: When installing MCEGold, a Word Add-in driver is installed. You may receive a message informing you that “Windows can’t verify the publisher of this driver software.” Select “Install this driver software anyway”.

7. When the installation of components is complete the **Next** button appears. Click **Next**.
8. A progress bar shows the progress of copying files to your computer.
9. When the installation is complete you must reboot your system. Select the Reboot Now option and click **Close**.



10. After rebooting, locate and copy the backup Emaxprb.xml file and the Template folder back into their appropriate locations in

C:\PdMA Corporation\MCEGold\Emax
C:\PdMA Corporation\MCEGold\Report

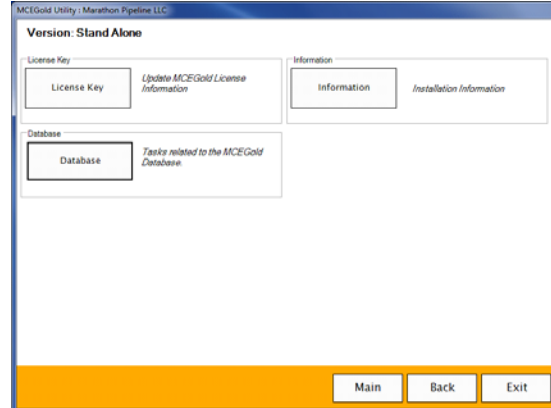
11. Answer Yes to “Merge the folder?” inquiry.
12. Remove the MCEGold 3.0.3 SP6 USB flash drive from the computer.

DATABASE SETUP

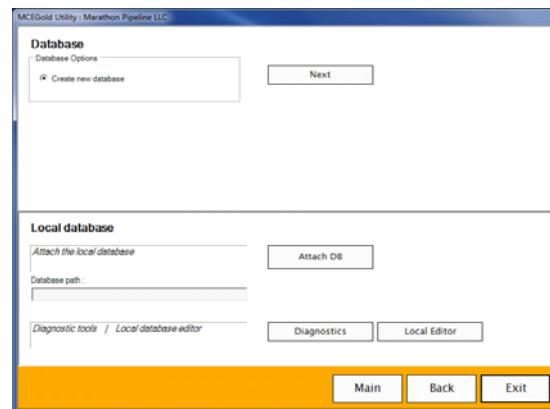
NOTE: This procedure is for connecting to an existing database that is to be upgraded to MCEGold 3.0.3 SP6. To connect to an existing database, please following the instructions below.

1. Ensure you have properly backed up the database you are converting.

2. Open the Utility program and click the **Database** button.

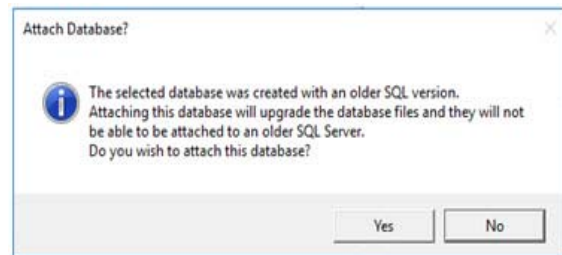


3. Click **Attach DB** as shown in the below.

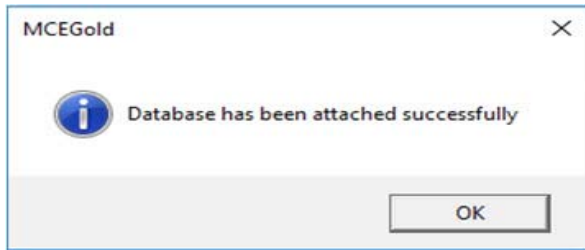


4. Navigate to the database location on your computer and select the desired database.

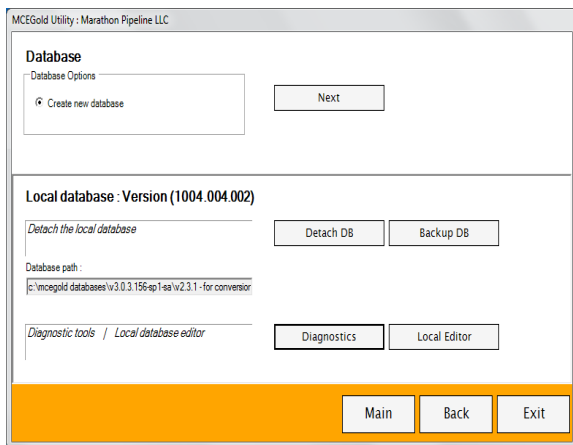
If you receive the following message: “The database you selected was created with an older SQL version”, the database needs to be upgraded to SQL 2008. **Stop!** Click **No**. Do **NOT** proceed! Contact Technical Support.



- If the database attached properly you will see the following window. Click **OK**.



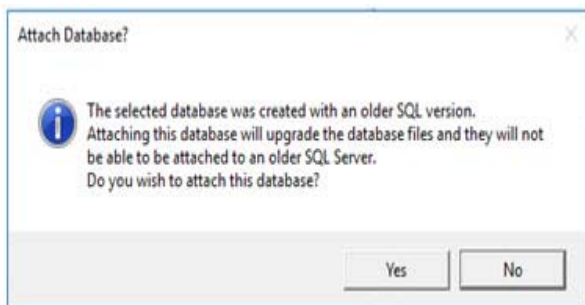
- The MCEGold Utility Database Window opens. Click **Exit**.



START MCEGOLD

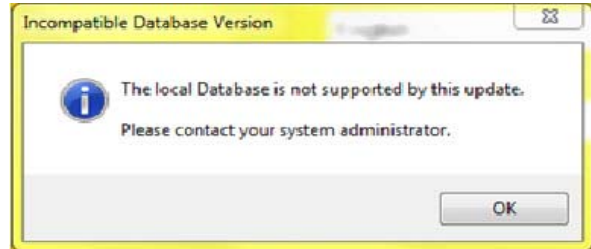
- Start MCEGold.

If you receive the following message: “The database you selected was created with an older SQL version”, the database needs to be upgraded to SQL 2008. **Stop!** Click **No**. Do **NOT** proceed! Contact Technical Support.

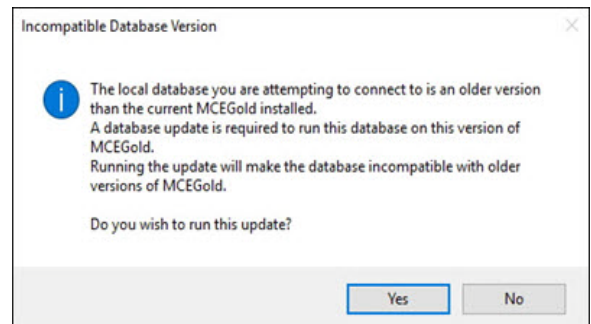


If you receive the following “local database is not supported by this update” message when trying to start MCEGold, the attached database is too old for

conversion and needs to be updated to MCEGold 2.6.1 or later prior to updating to MCEGold 3.0.3 SP6.



If you receive the following *Incompatible Database Version* message when trying to start MCEGold, you are attempting to run MCEGold with a database that is older than V3.0.3-SP6. You will be prompted to update the database. If you have properly backed up your existing database, click **Yes** to run the update. If you have not backed up your existing database, click **No**, backup the database, and then perform the Database Setup procedure.



- Click **OK** on the message window. The message window closes, leaving the MCEGold Login window open.
- If there is another database available, click on **Search** (the three dots on the right of Site) to bring up the navigator to search for the other database. If none are available, click **Cancel** to exit out of MCEGold, and contact PdMA Technical Support at 813-621-6463 ext. 251.