

TECHNOTE 1705-N10

ISSUED

October 2017

SUBJECT

Release of MCEGold® 3.0.3 SP4 - Network Version for Windows 10.

DESCRIPTION

MCEGold 3.0.3 SP4 Network Version is an upgrade from MCEGold 3.0.3. SP3.

PDMA CLOUD SERVICES

The network edition of MCEGold 3.0.3 SP4 supports access to PdMA Cloud Services. Please contact PdMA Technical Support (813-6216-6463 ext. 251) to discuss this option.

NOTES

- MCEGold 3.0.3 SP4 is only compatible with Windows 10 and Windows 7 and M-Series testers.

- Installation of MCEGold 3.0.3 SP4 on a Windows 10 computer uses a special installation procedure. For a Windows 7 installation refer to TechNote 1705-S7 (Stand Alone) or TechNote 1705-N7 (Network) as applicable.

- MCEGold Word Add-in is only compatible with MS Word 2007 and 2013. MCEGold Word Add-in is NOT compatible with MS Word 2010. Templates created with other versions of MS Word may not be functional and may cause conflicts with the MCEGold software.

- To ensure application accessibility, the default installation location has been set to C:\PdMA Corporation.

- Databases attached to MCEGold 3.0.3 SP4 must be from MCEGold 2.6.1 or later and once updated with 3.0.3 SP4 *will not* be compatible with older versions of MCEGold.

- Assets exported with MCEGold 3.0.3 SP4 *will not* be compatible with older versions of MCEGold.

- If you have any questions, please contact PdMA Technical Support (813-621-6463 ext. 251).

Minimum Requirements

Computer	Dell Latitude E5470 Laptop*
Processor	2+ GHz Intel i5 or equivalent
Resolution	1600 x 900/1920 x 1080 (small font)
Operating System	Microsoft® Windows 10 (32 or 64 bit)**
Memory	4.0+ G RAM***
Ports/Drives	(1) USB Port in Rear or Side
Hard Disk	20G Available

* Using any other computer manufacturer in conjunction with the PdMA software may result in erratic computer behavior; not limited to but including:

- Power Management Issues
- Lock-up
- Communication Port Malfunction
- Driver Incompatibility
- Display Errors
- SQL Database Incompatibility
- Network Synchronization Issues.

** For International Customers: Windows 10 (32 or 64-bit)

*** If you are upgrading from MCEGold 2.6.1 - 2.6.2 verify that your computer has at least 4G of RAM.

UPDATE SERVER DATABASE FOR NETWORK USERS

NOTE: Ensure the user account being used to update the server has “sysadmin” permissions.

There is a separate application on the Installation USB flash drive to update the network database on the server. ***The database must be updated on the server first, then the desktops and field testers.***

If the update is installed on a network field tester before the server database is updated, a warning message appears informing you the database is an old version and to contact your system administrator.

1. Backup the MCEGold server database.
2. Insert the MCEGold 3.0.3 SP4 USB flash drive into the USB port. If the drive starts automatically, click **Exit** and proceed to the next step.
3. Locate the MCEGold Database Server Update folder on the MCEGold 3.0.3 SP4 USB flash drive.
4. Click on the MCEGold Database Server Update.exe file.
5. The Server Information window opens. Fill in the Server, Database, Login, and Password information. The Login and Password will depend on your authentication (Windows/SQL).
6. Click **Run Update**. The progress status will display on the window.
7. When the update complete message displays, close the window.

PREPARE WINDOWS 10 FOR MCEGOLD 3.0.3 SP4 INSTALLATION

NOTE: If you have updated to Windows 10 from a previous version of Windows, you must perform a full uninstall of MCEGold regardless of the version. If you have not previously installed MCEGold on your Windows 10 computer, it is not necessary to uninstall MCEGold. Go to the Disable Driver Signature Enforcement section.

Backup

Before beginning the MCEGold uninstall, copy the Emaxprb.xml file only (not the folder) and the complete Templates folder to a safe location and make note of the location.

The default location for the files is listed below, however you may have chosen a different location during the original installation.

C:\PdMA Corporation\MCEGold\Emax
C:\PdMA Corporation\MCEGold\Report

Uninstall

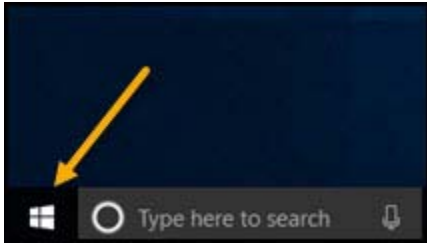
1. Select Start, Control Panel, select Programs, then Programs and Features.
2. In the Uninstall or change a program window scroll down to locate and highlight the MCEGold Version X.X.X on the list.
3. Click **Uninstall/Change** located above the list and follow on-screen prompts.
4. Click **Finish** when the “Uninstall Complete” message is received.
5. Locate the PdMA MCEMAX Tester (Driver Removal) file. Highlight it and click **Uninstall/Change** located above the list and follow the on-screen prompts.
6. Click **Finish** when the “Uninstall Complete” message is received.
7. Locate the C:\PdMACorporation folder and delete it. The subfolders will be deleted also. After the installation of MCEGold 3.0.3 SP4 the new folder location will be C:\PdMA Corporation\....
8. Reboot your computer.
9. Go to step one in Disable Driver Signature Enforcement section.

Disable Driver Signature Enforcement

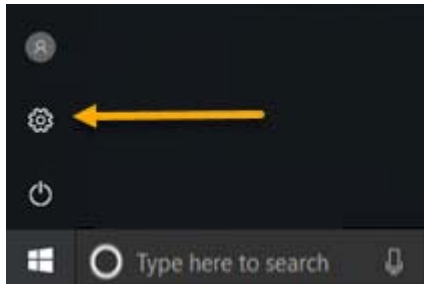
NOTE: To install MCEGold 3.0.3 SP4 on a Windows 10 operating system, the operating system must be in the “Disable driver signature enforcement” mode.

Use the following steps to enter the Disable Driver Signature Enforcement mode.

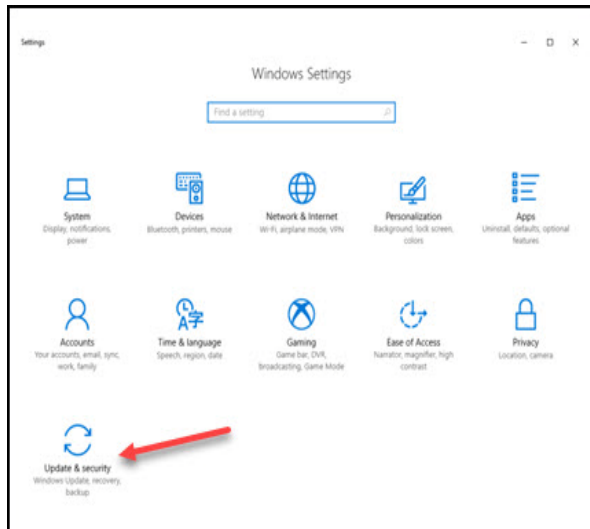
1. From the main Windows 10 screen, click the **Start** button in the lower left corner of the computer screen.



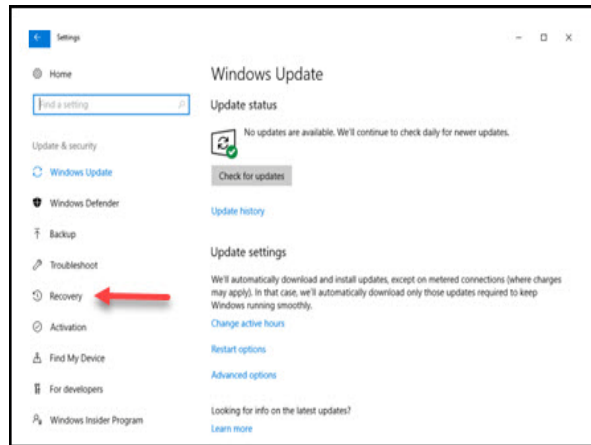
2. Click **Settings**.



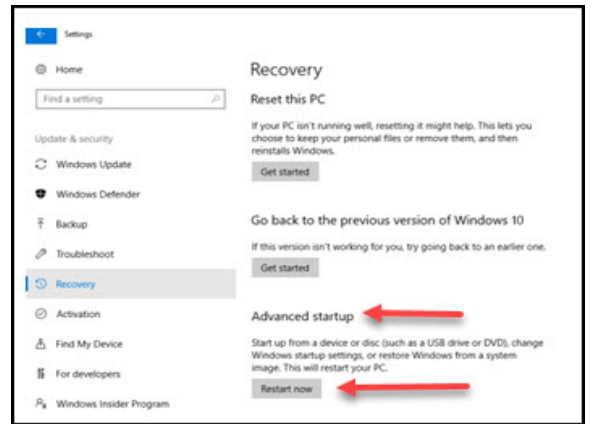
3. From the Windows Settings window, select **Update and Security**.



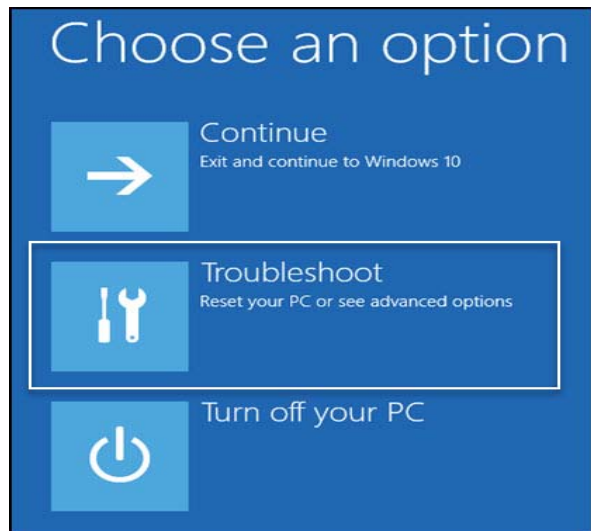
4. From the Windows Update window, select **Recovery**.



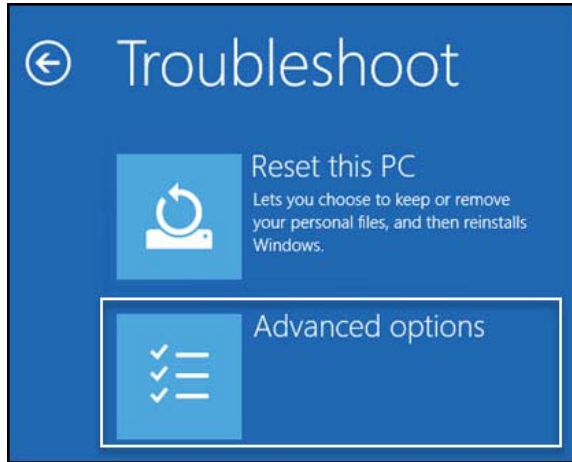
5. From the Recovery window, in the Advanced startup section, click **Restart now**.



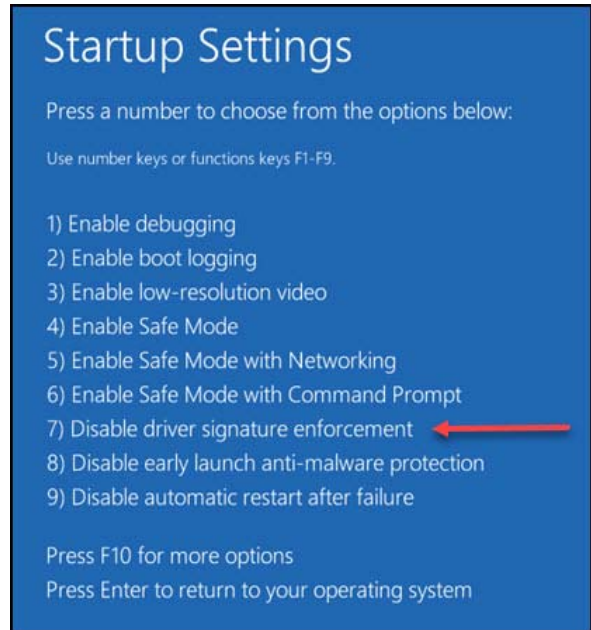
6. From the Choose an option window, select **Troubleshoot**.



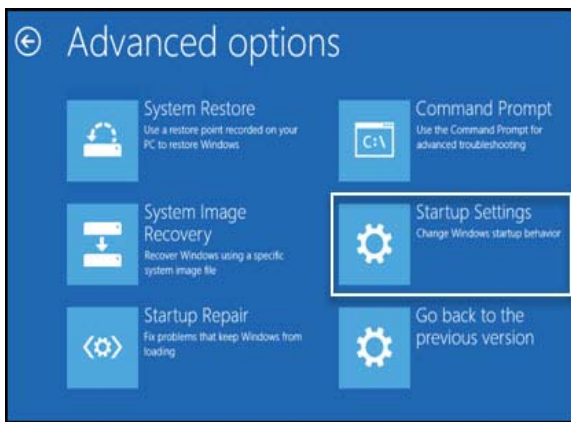
7. From the Troubleshoot window, Select **Advanced options**.



10. From the next Startup Settings window, press # 7 to select **Disable driver signature enforcement**.



8. From Advanced Options window, Select **Startup Settings**.

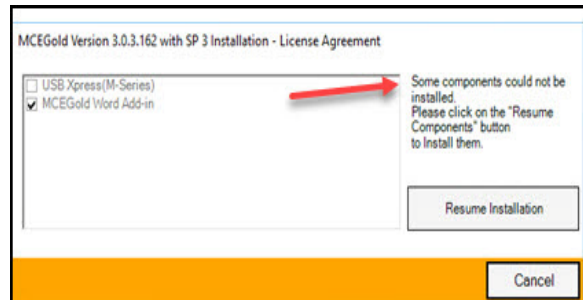
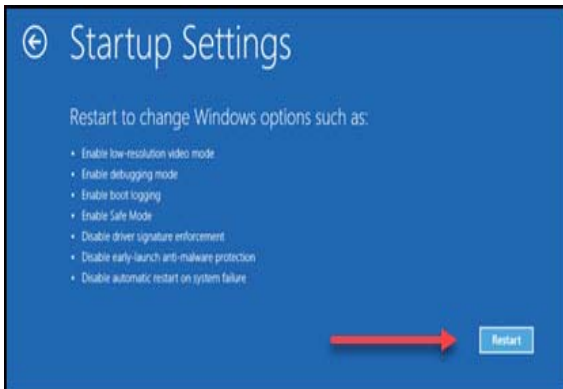


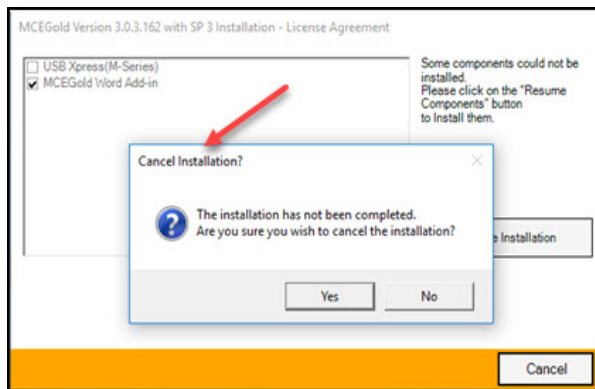
11. The computer displays the start up screen. Go to the MCEGold 3.0.3 SP4 Installation section.

MCEGold 3.0.3 SP4 INSTALLATION

NOTE: During the installation process, if you see either of the following windows or messages: MCEGold – **Some components could not be installed**, or MCEGold – **Cancel Installation?**, then Windows 10 has not been configured to allow unsigned driver installation. See the section *Prepare Windows 10 for MCEGold 3.0.3 SP4 Installation*.

9. From the Startup Settings window, click **Restart**.





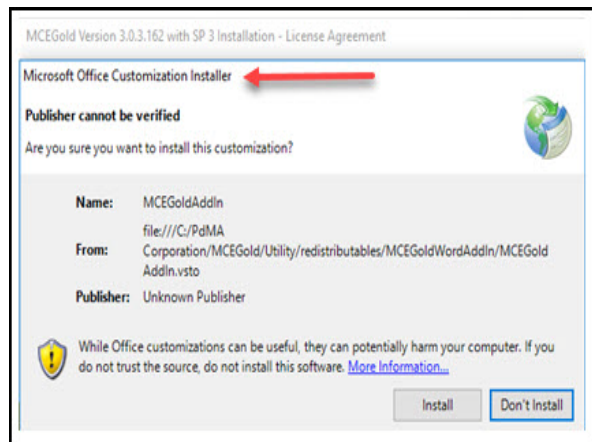
1. Insert the MCEGold 3.0.3 SP4 USB flash drive into the USB port. If the installation does not begin automatically, run setup.exe from the USB flash drive. (Select Run, setup.exe from the AutoPlay window).
2. Right click on setup.exe and select Run as administrator.
3. The License Agreement window opens. Read the PdMA license and select the “I Accept” option button. The **Next** button becomes visible. Click **Next**.
Note: If you do not accept the terms, the **Next** button is not visible, you can only click **Cancel**, which closes the software without installing it.



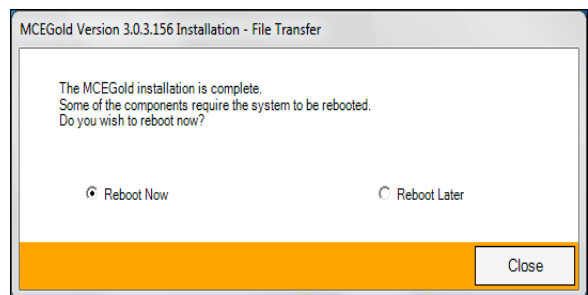
4. In the License Key window enter your Company Name and License Key exactly as provided by PdMA. You may copy and paste the license key using the paste button.
5. Click **Submit** (located to the right of the Company Name). When the license has been verified a green check appears. The **Next** button appears. Click **Next**.

6. In the Installation Path window, accept the default shown in the text box (recommended) for the location to install the MCEGold program folder or using the drop-down list select an alternate location, make a note of it for your future use, and click **Next**. Note: It is not suggested to use an alternate location because that can cause conflict and Windows rights problems.
7. When prompted, click **Install Components**. Some components may require additional prompts.

Note: When installing MCEGold, a Word Add-in driver is installed. You may receive a message informing you that “Windows can’t verify the publisher of this driver software.” Select “Install”.



8. When the installation of components is complete the **Next** button appears. Click **Next**.
9. A progress bar shows the progress of copying files to your computer.
10. When the installation is complete you must reboot your system. Select the Reboot Now option and click **Close**.



11. After rebooting, locate and copy the backup Emaxprb.xml file and the Template folder back into their appropriate locations in

C:\PdMA Corporation\MCEGold\Emax
 C:\PdMA Corporation\MCEGold\Report

12. Answer Yes to “Merge the folder?” inquiry.
13. Remove the MCEGold 3.0.3 SP4 USB flash drive from the computer.

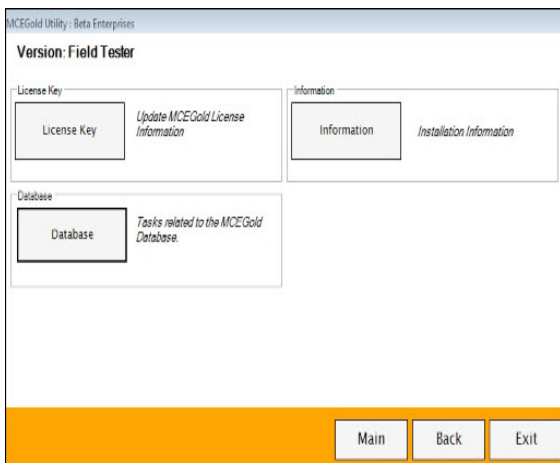
FIELD TESTER DATABASE SETUP

NOTE: For the following, please use the information provided by your IT department.

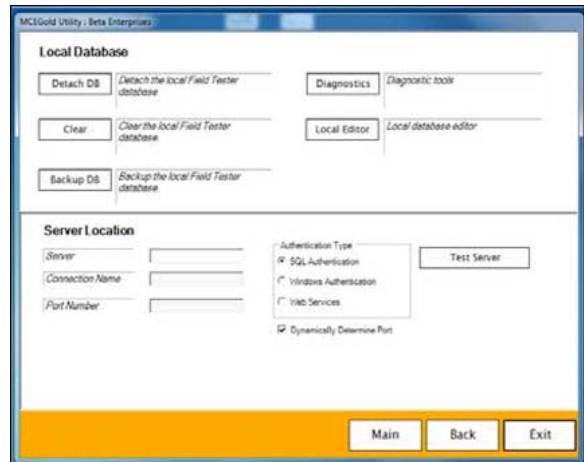
Field testers utilize a local database for storage of assets. These assets can then be synchronized with the Network database. In order to perform field testing in local tester mode, assets must be down-synced to the local database. In order to perform testing using MCEGold Lite, assets must be in a WatchList and down-synced to the local database.

To connect to the existing network database, please follow the instructions below.

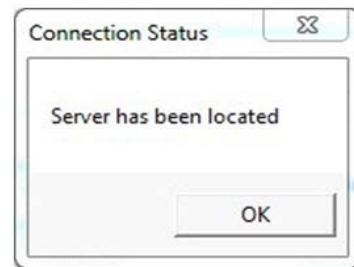
1. Open the MCEGold Utility program.
2. Click **Database**.



3. Enter the server information provided by your IT department.

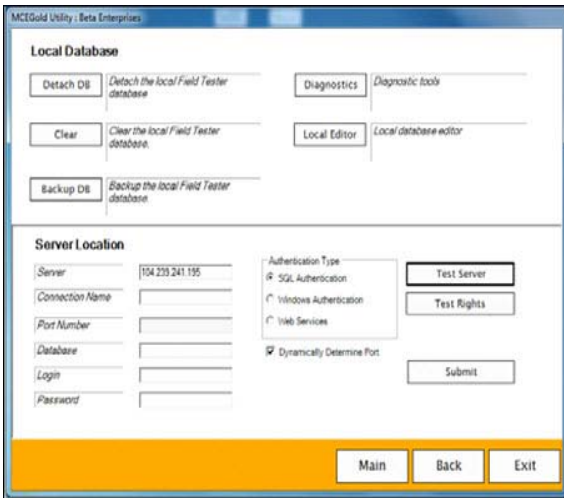


4. Once the server information has been entered, click **Test Server**. You should receive a message indicating “Server has been located”.

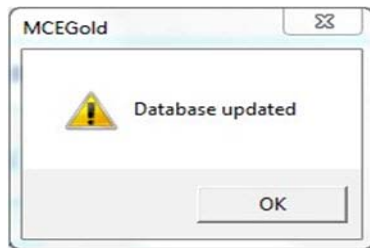


5. Click **OK** on the Connection Status window.

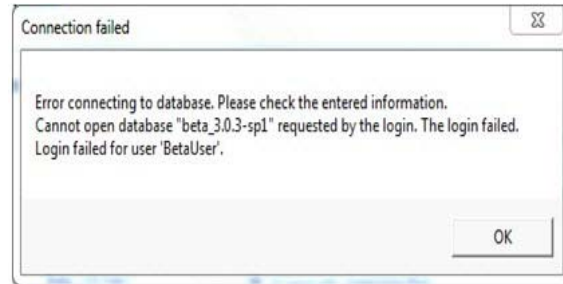
6. Enter the following connection information provided by either your Administrator or IT Department: Connection Name, Database Information, Login Information, and Password.



7. Click **Submit**. You will receive a message indicating “Database updated”. Click OK.



8. If you receive an error as shown below, verify the information you entered is correct. If it is correct, click OK and contact your Administrator.



9. If you do not receive an error message, click **Exit** on the Utility window.
10. Start MCEGold and enter the name and password for the tester. Select the Field Tester Network mode.
11. Once you have opened MCEGold and you have verified MCEGold is correctly communicating with the database. You are now ready to perform testing.